



Mekong River Commission

Weekly Dry Season Situation Report in the Lower Mekong River Basin

26 May – 01 June 2026

Prepared by
The Regional Flood and Drought Management Centre
02 June 2026

The MRC is funded by contributions from its Member Countries and Development Partners, including Australia, Belgium, the European Union, Finland, France, Germany, Japan, Luxembourg, the Netherlands, Sweden, Switzerland, the United States and the World Bank.

Copyright © Mekong River Commission, 2026

First published (2020)

Some rights reserved.

This work is the product of the Mekong River Commission Secretariat. While all efforts are made to present accurate information, the Secretariat does not guarantee the accuracy of the data included in this work. The boundaries, colours, denomination, and other information shown on any map in this work do not imply any judgement on the part of the MRC concerning the legal status of any territory or the endorsement or acceptance of such boundaries.

Nothing herein shall constitute or be considered to be a limitation upon or waiver of the privileges and immunities of the MRC, all of which are specifically reserved.

This publication may be reproduced in whole or in part and in any form for educational or non-profit purposes without special permission from the copyright holder, provided acknowledgement of the source is made and notification is sent to the MRC. The MRC would appreciate receiving a copy of any publication that uses this publication as a source. This publication cannot be used for sale or for any other commercial purpose whatsoever without permission in writing from the MRC.

Title: Weekly dry season situation report in the Lower Mekong River Basin for 26 May – 01 June 2026.

ISSN: 1728-3248

Keywords: Monitoring/forecasting/weather/the Mekong/the Tonle Sap Lake

For bibliographic purposes, this volume may be cited as:

Mekong River Commission. (2026). *Weekly dry season situation report in the Lower Mekong River Basin for 26 May – 01 June 2026*. Vientiane: MRC Secretariat.

Information on MRC publications and digital products can be found at
<http://www.mrcmekong.org/publications/>

All queries on rights and licenses should be addressed to:

Mekong River Commission

Documentation and Learning Centre

184 Fa Ngoum Road, Unit 18, Ban Sithane Neua, Sikhottabong District, Vientiane 01000, Lao PDR

Telephone: +856-21 263 263 | E-mail: mrcs@mrcmekong.org | www.mrcmekong.org

Content

- Content 22**
- List of Figures..... 23**
- List of Tables..... 24**
- Key Messages 25**
- 1 Introduction 26**
- 2 General Weather Patterns 27**
- 3. Rainfall and Water Level Monitoring 28**
 - 3.1. Rainfall monitoring 28**
 - 3.2. Water level monitoring 30**
- 4. Flash Flood in the Lower Mekong Basin 34**
- 5. Drought Monitoring in the Lower Mekong Basin..... 34**
 - 5.2. Weekly drought monitoring..... 34**
- 6 Weather and Water Level Forecast and Flash Flood information 37**
 - 6.1 Rainfall forecast 37**
 - 6.2 Water level forecast 39**
 - 6.3 Flash Flood Information..... 42**
 - 6.4 Drought forecast 42**
- 7 Summary and Possible Implications 43**
 - 7.1. Rainfall and its forecast..... 43**
 - 7.2. Water level and its forecast 43**
 - 7.3. Flash flood and its trends..... 43**
 - 7.4. Drought condition and its forecast 43**
- Annex A: Weekly water level monitoring at 22 key stations..... 44**
- Annex B: Tables for weekly updated water levels and rainfall at the Key Stations..... 25**

List of Figures

Figure 1: Weather conditions over the LMB.....	27
Figure 2: Outlook of wet and dry conditions over the Asian countries by ASMC.....	28
Figure 3: One tropical storm risk observed on 01 June 2026.....	28
Figure 4: Weekly rainfall distribution over the LMB during 26 May – 01 June 2026.....	29
Figure 5: The key stations along LMB for river flood forecasting.....	31
Figure 6. Water level at the Jinghong hydrological station up to 01 June 2026	32
Figure 7: Seasonal change of inflows and outflows of Tonle Sap Lake.	33
Figure 8. The seasonal change in monthly flow volume of Tonle Sap Lake.	33
Figure 9: Weekly standardized precipitation index	35
Figure 10: Weekly Index of Soil Water Fraction	36
Figure 11: Weekly Combined Drought Index.....	37
Figure 12: Accumulated rainfall forecast from CHIRP-GFS (02 – 06 June 2026)	38
Figure 13. Weekly forecasts for SPI and CDI.....	42

List of Tables

Table 1. The monthly change in the flow volume of Tonle Sap Lake. 34

Table 2. Weekly River Monitoring Bulletin. 40

Key Messages

Key messages for this weekly report are presented below.

Rainfall monitoring and forecast

- In the period of 26 May - 01 June 2026, light to moderate rainfall that is expected to occur in some areas in the LMB.
- During 02 - 08 June 2026, light to moderate rainfall is forecast in some areas in the LMB, with localized heavy rainfall events anticipated in some areas, especially in the lower part of the basin.

Water level monitoring and forecast

- At 22 key monitoring stations along the Mekong mainstream from 26 May – 01 June 2026, Water levels at all stations along the Mekong mainstream are in normal conditions. The total accumulated reverse flow to TSL is 00.00 Km³. However, the 6 monitoring stations remain in normal condition with respect to the flow threshold (PMFM Thresholds). It is also the same condition for Tan Chau and Chau Doc monitoring stations, which are significantly influenced by sea tidal fluctuation.
- In the period of 02 – 06 June 2026, water levels at from Luang Prabang to Savannakhet stations are expected to rise. However, from Khong Chiam downstream, they are expected to slightly drop. No stations are expected to reach either alarm or flood levels in the next five days.

Drought condition and forecast

- During 26 May – 01 June 2026, according to the Combined Drought Indicator (CDI), no significant drought conditions were observed across the majority of the Lower Mekong Basin (LMB). However, localized drought conditions persisted in parts of Savannakhet Province (Lao PDR) and Siem Reap Province (Cambodia)
- The weekly forecast from 02 - 08 June 2026 indicates that no drought conditions are expected across the Lower Mekong Basin (LMB) during the coming week based on the Combined Drought Index (the detailed areas in the table below).

1 Introduction

This Weekly Dry Season Situation Report presents a preliminary analysis of the weekly hydrological situation in the Lower Mekong River Basin (LMB) for **26 May – 01 June 2026**. The trend and outlook for water levels are also presented.

This analysis is based on the daily hydro-meteorological data provided by the Mekong River Commission (MRC) Member Countries – Cambodia, Lao PDR, Thailand, and Viet Nam – and on satellite data. The water level indicated in this report refers to an above zero gauge of each station.

The report covers the following topics that are updated weekly:

- General weather patterns, including rainfall patterns over the LMB.
- Water levels in the LMB, including in the Tonle Sap Lake.
- Flash flood and drought situation in the LMB.
- Weather, water level and flash flood forecast, and
- Possible implications.

Mekong River water levels are updated daily and can be accessed from:

<http://ffw.mrcmekong.org/bulletin.php>.

Drought monitoring and forecasting information is available at:

<http://droughtforecast.mrcmekong.org>

Flash flood information is accessible at: <http://ffw.mrcmekong.org/ffg.php>

2 General Weather Patterns

From 26 May – 01 June 2026, it is forecasted that the low-pressure system affected the Lower Mekong Basin. Under this circumstance, light to moderate rainfall is forecast in some areas in the LMB, with localized heavy rainfall events anticipated in some areas, especially in the lower part of the basin.

Figure 1 presents mean sea level pressure over the region in the next 7 days.

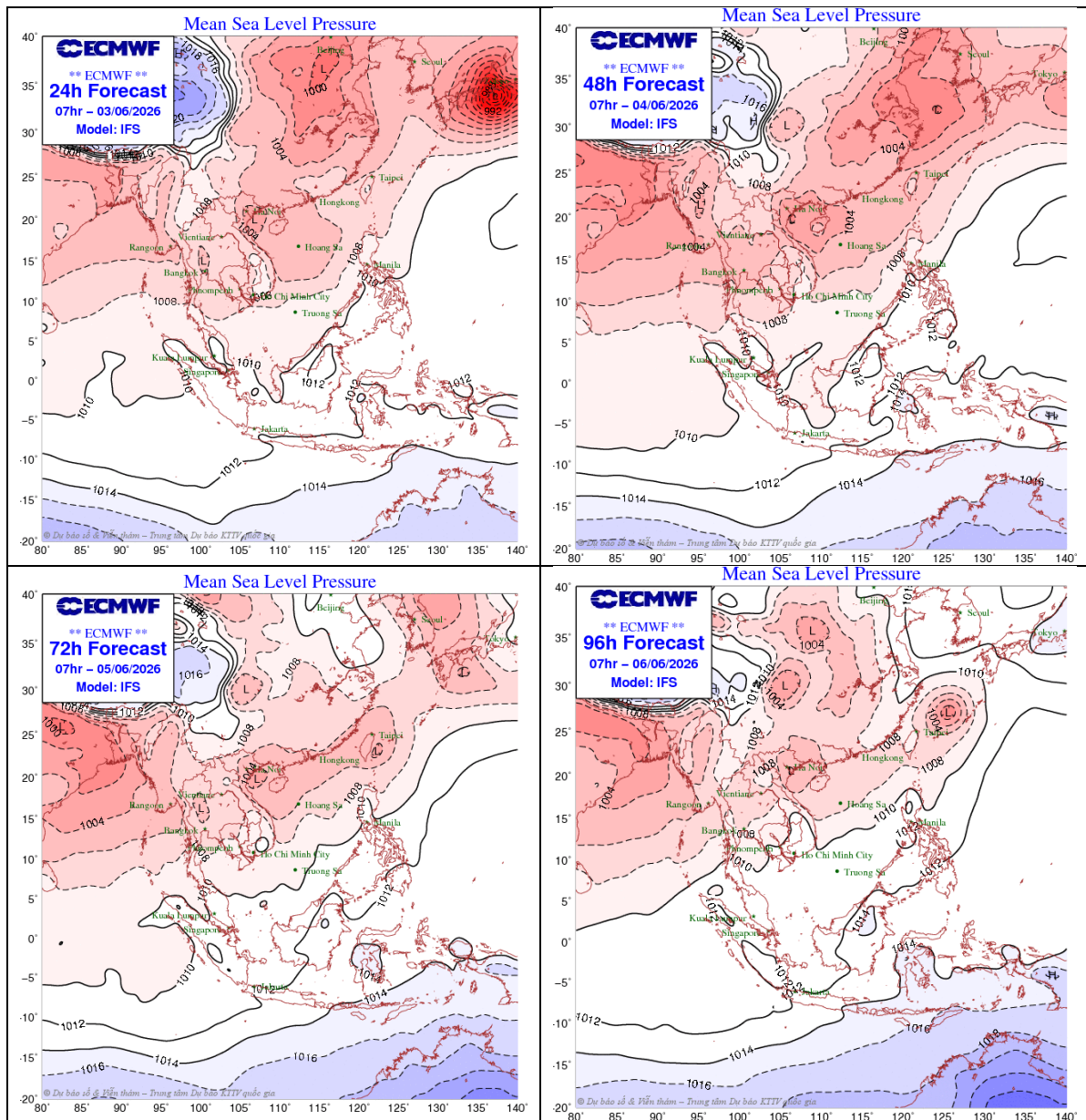


Figure 1: Weather conditions over the LMB

According to the ASEAN Specialised Meteorological Centre (ASMC, <http://asmc.asean.org/home/>), Drier than usual conditions are predicted over central parts of LMB in Week over the entire LMB in Week 1 (11 – 24 May 2026). However, Warmer than usual temperatures are predicted over most of LMB in Week 1 (11 – 17 May). **Figure 2** shows the outlook of weather

condition from 11 to 24 May 2026 in Southeast Asia based on results from the NCEP model (National Centres for Environmental Prediction).

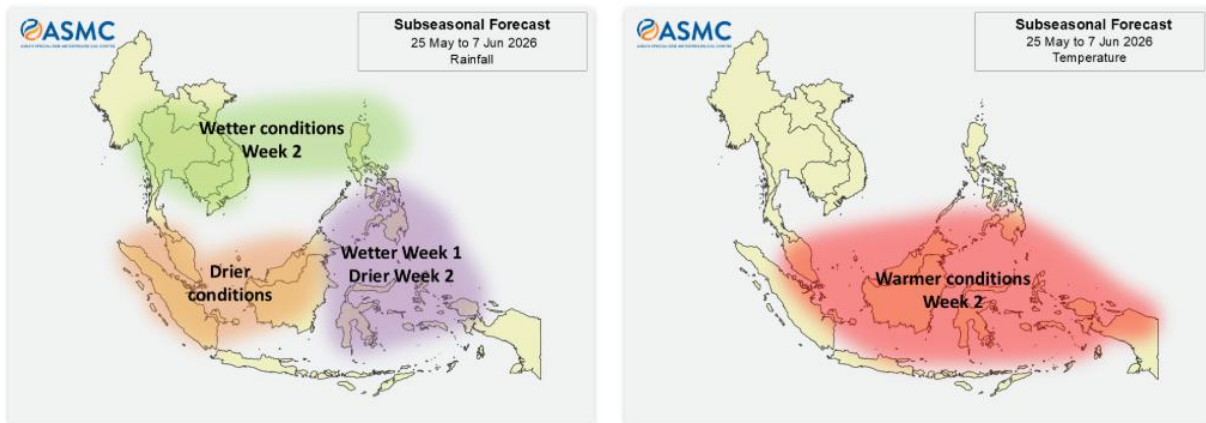


Figure 2: Outlook of wet and dry conditions over the Asian countries by ASMC.

Based on the JMA tropical storm (TS) information (https://www.jma.go.jp/bosai/weather_map/#lang=en), there are several active tropical depression (TD) and tropical storms in NW pacific system as of 01 June 2026 as displayed in Figure 3. However, they may not directly affect the LMB, only moderate to heavy rainfall have been observed.

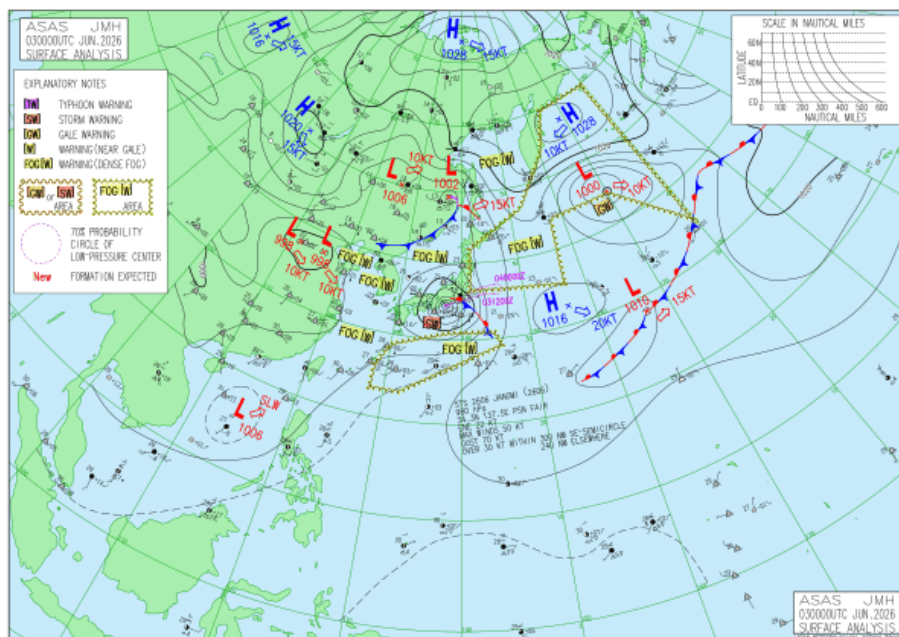


Figure 3: One tropical storm risk observed on 01 June 2026

3. Rainfall and Water Level Monitoring

3.1. Rainfall monitoring

The weekly accumulated rainfall based on the observed data provided by the MRC Member Countries – Cambodia, Lao PDR, Thailand, and Viet Nam – from 26 May – 01 June 2026 (Figure 4). Light to moderate rainfall that is expected to occur in some areas in the LMB.

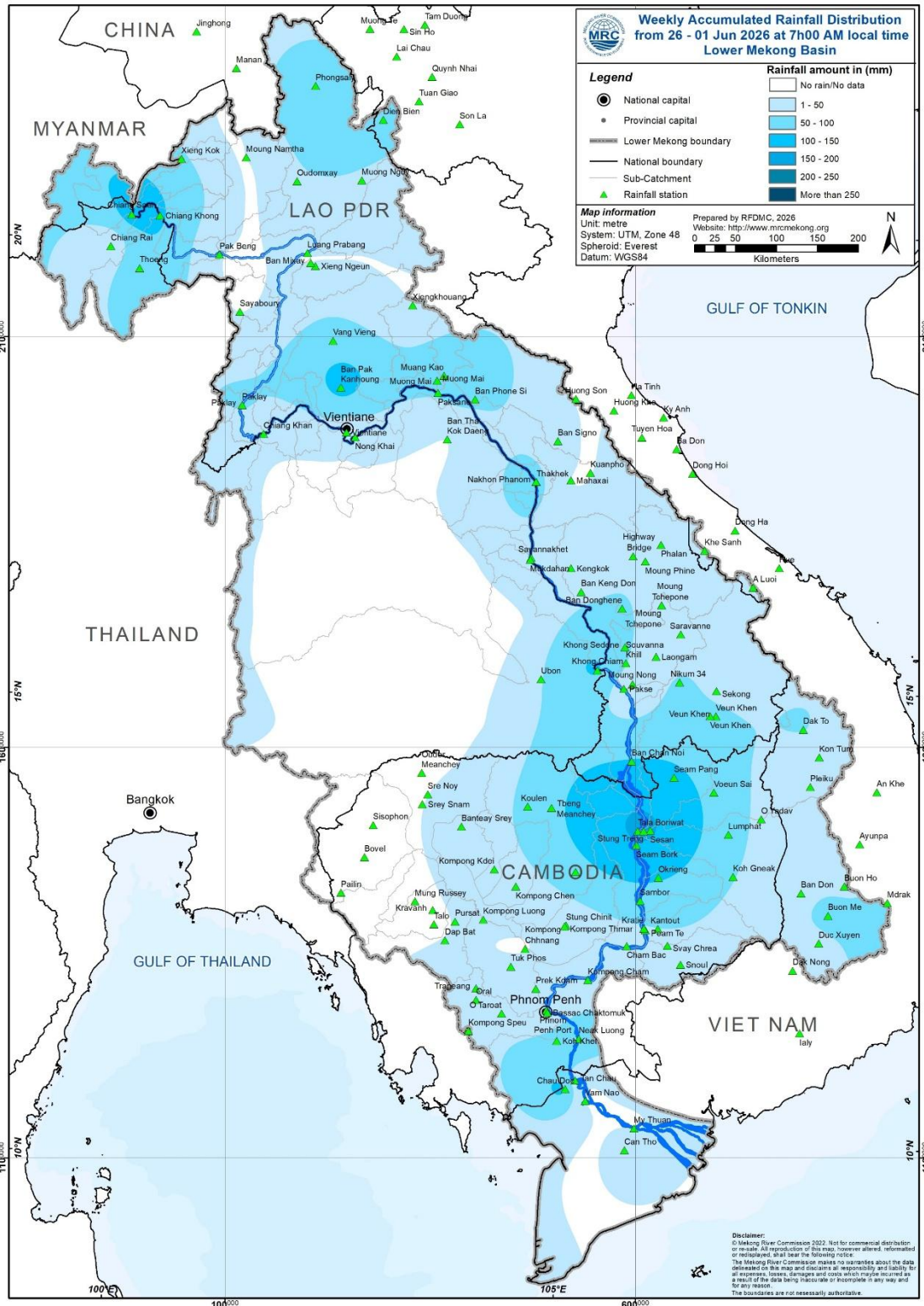


Figure 4: Weekly rainfall distribution over the LMB during 26 May – 01 June 2026

3.2. Water level monitoring

The hydrological regimes of the Mekong mainstream are illustrated by recorded water levels and flows at key mainstream stations: at Chiang Saen to capture mainstream flows entering from the Upper Mekong Basin (UMB); at Vientiane to present flows generated by climate conditions in the upper part of the LMB; at Pakse to investigate flows influenced by inflows from the larger Mekong tributaries; at Kratie in Cambodia to capture overall flows of the Mekong Basin; and at Viet Nam's Tan Chau and Chau Doc to monitor flows to the Delta.

The key stations along the LMB and their respective model application for River Flood Forecasting during the wet season from June to October and River Monitoring during the dry season from November to May are presented in **Figure 5**. The hydrograph for each key station is available from the MRC's River Flood Forecasting: <http://ffw.mrcmekong.org/overview.php>.

During 19 – 25 May 2026, the observed water level (WL) at Jinghong hydrological station¹, was almost constant and ranges between 535.39 m and 537.21 m, which are corresponding to the outflow between 930.00 m³/s to 2,340.00 m³/s (recorded on 7:00 am), respectively (**Figure 6**). The water level in Chiang Saen Station also indicated a slight fluctuation ranging from 2.07 m to 3.34 m. At the same period, the water level in Luang Prabang station has increased 9.17 m to 9.30 m compared to the previous week. During the same period, the water level at Chiang Khan station, Vientiane, Nongkhai and Paksane also decreased from 5.62 m to 5.50 m, 3.93 m to 3.01 m, 3.10 m to 2.08 m, and 4.63 m to 3.37 m, respectively. The water levels observed at Nakhon Phanom, Thakhek, Mukdahan, Savannakhet, Khong Chiam and Pakse stations increased from 3.74 m to 2.67 m, 5.03 m to 3.90 m, 3.91 m to 2.98 m, 2.36 m to 1.49 m, 4.29 m to 3.57 m, and 3.06 m to 2.44 m, respectively. Similar trends, at Stung Treng, Koh Khel, and Neak Luong stations the water levels have also decreased from 3.73 m to 3.48 m, 2.06 m to 2.00 m, and 1.50 m to 1.20 m, respectively as compared to the previous week. However, at Kratie and Kompong Cham, the water levels have increased from 9.30 m to 9.42 m, and 3.70 m to 3.94 m, respectively.

In addition, at Phnom Penh (Bassac), Phnom Penh Port, and Prek Kdam, the water levels have remained stable as compared to the previous week.

Similar to the previous week, the water levels from 26 May to 01 June 2026 at Viet Nam's Tan Chau and Chau Doc fluctuated between their LTA values due to daily tidal effects from the sea. At the Tan Chau station, the water levels varied between 0.01 m and 0.69 m, while at the Chau Doc station, they ranged from 0.07 m and 0.88 m.

¹ Near-real time data of hydro-meteorological monitoring at the Jinghong hydrological station is available at <https://portal.mrcmekong.org/monitoring/river-monitoring-telemetry>.

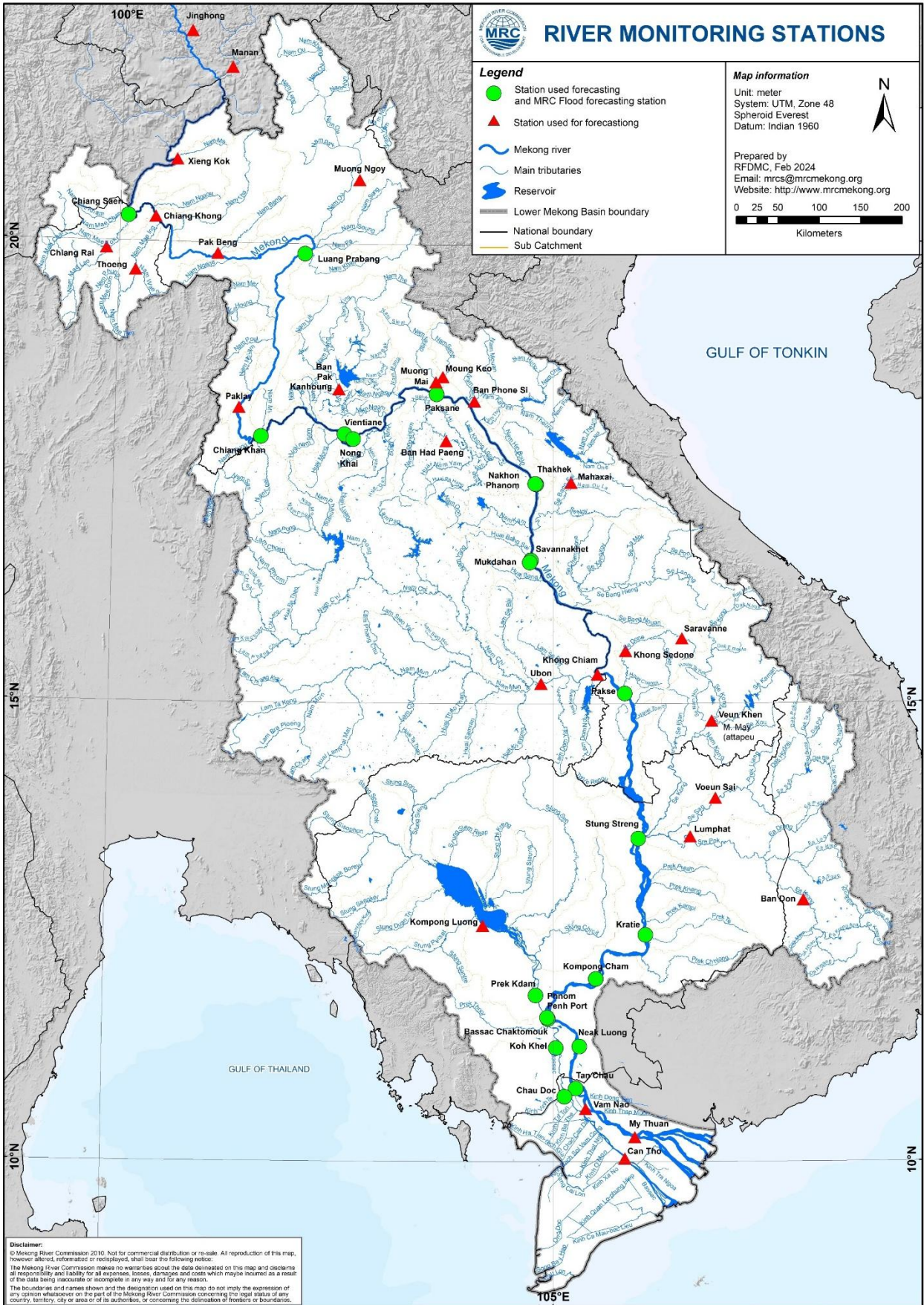


Figure 5: The key stations along LMB for river flood forecasting

The water levels in key monitoring stations on 01 June 2026 are in normal conditions. At most of stations from Chiang Saen to Pakse, water levels are above LTAs, while those from Stung Treng downstream, they are below LTAs. Moreover, all stations with available PMFM thresholds are in normal conditions. The graphics of water level monitoring in all key stations are presented in **Annex A** and the weekly water levels and rainfall at each key station are summarised in **Annex B**.

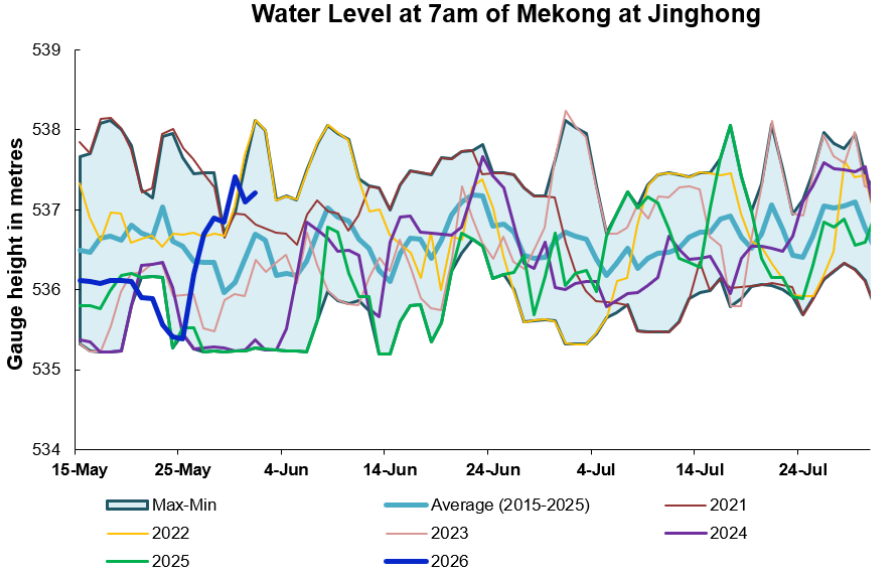


Figure 6. Water level at the Jinghong hydrological station up to 01 June 2026

At the end of the wet season, when water levels along the Mekong River subside, the outflow of the Tonle Sap Lake (TSL) returns to the Mekong River and then to the Delta. This phenomenon normally takes place between September and October. Based on flow observation at Prek Kdam monitoring station, the outflow of the Tonle Sap Lake took place since 14 September 2025.

The outflow flow is calculated based on a formula of rating-curves using by difference of water levels at Kompong Luong and Phnom Penh Port stations for slop and Prek Kdam as cross-section of the Lake. The formula of flow is as follows:

$$Flow = WL_{Prek\ Kdam}^{1.2} \times \sqrt{|WL_{Phnom\ Penh\ Port} - WL_{Kompong\ Luong}|}$$

Where, WL is water level in m (msl).

The seasonal changes of the inflow/reverse flow and the outflow of the TSL at Prek Kdam in comparison with the flows of 2020, 2021 and 2022, 2023, 2024 and their LTA level (1997–2024) are illustrated in **Figure 8**. Up to 01 June 2026, it was observed that the main outflow from Tonle Sap Lake has recessing (**Figure 8**). This decreased outflow of Tonle Sap Lake was most likely caused by low inflows from its tributaries.

The seasonal changes in monthly flow volumes up to 01 June 2026 for the TSL compared with that in 2020, 2021, 2022, 20, 2024, 2025 and their LTAs, and the fluctuation levels (1997–2024) are presented in **Table 1**. The mean monthly mean water volume of the Tonle Sap Lake in May 2026 is lower than its LTA (about 90.51 %), 2022 and 2025, however it is higher than 2020, 2021, 2023, 2024 during the same period (**Figure 8 and Table 1**).

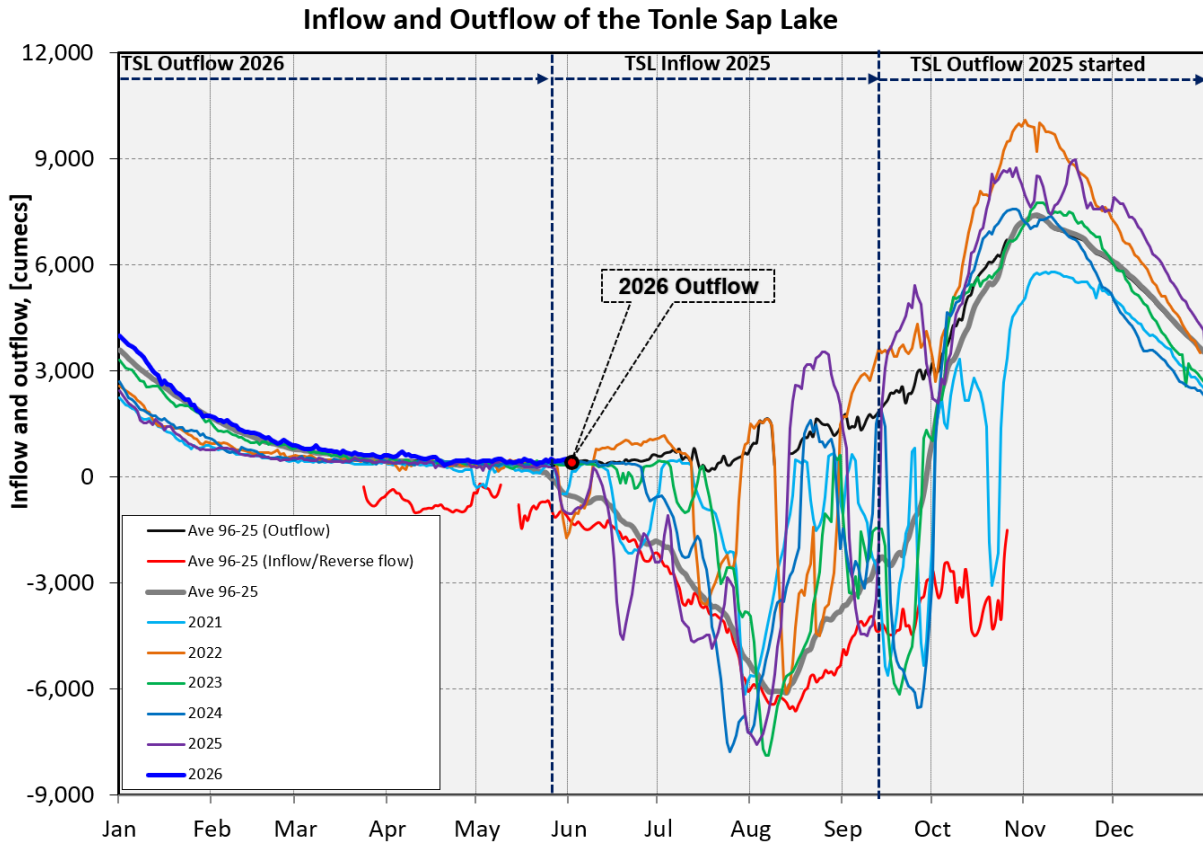


Figure 7: Seasonal change of inflows and outflows of Tonle Sap Lake.

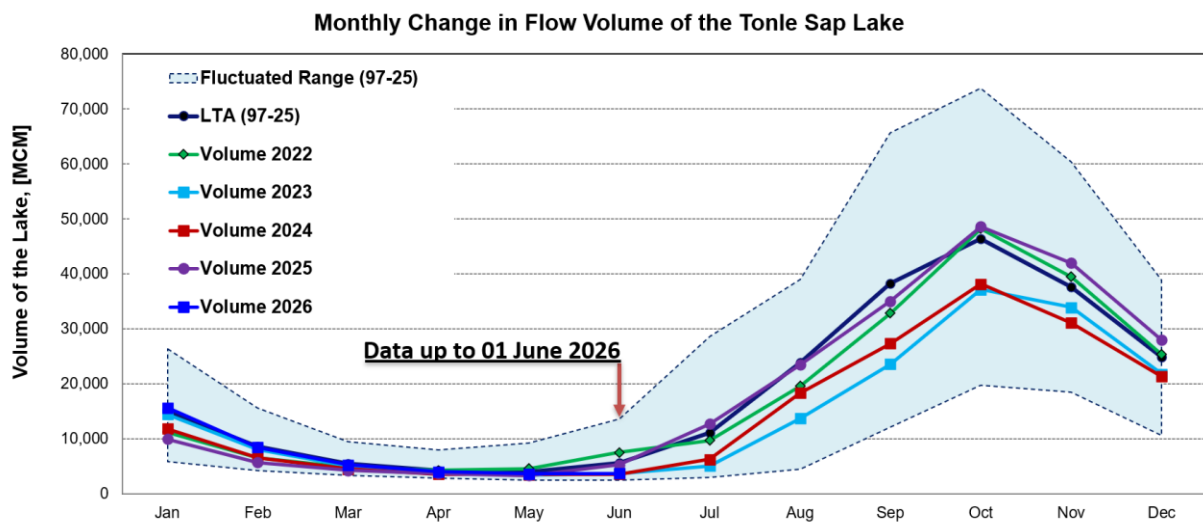


Figure 8. The seasonal change in monthly flow volume of Tonle Sap Lake.

Table 1. The monthly change in the flow volume of Tonle Sap Lake.

Month	LTA (97-25) [MCM]	Max Volume [MCM]	Min Volume [MCM]	Volume 2020 [MCM]	Volume 2021 [MCM]	Volume 2022 [MCM]	Volume 2023 [MCM]	Volume 2024 [MCM]	Volume 2025 [MCM]	Volume 2026 [MCM]	Volume in 2026 [%], compared with its LTA
Jan	15016.17	26357.53	5906.80	5906.80	9923.80	11214.32	14422.11	11824.86	9927.00	15639.19	104.15
Feb	8543.47	15596.22	4198.60	4264.19	5832.97	6558.79	8069.29	6505.88	5690.52	8447.12	98.87
Mar	5522.42	9438.24	3347.07	3553.99	4264.88	4736.52	5080.64	4488.23	4256.33	5252.98	95.12
Apr	4279.51	8009.14	2866.91	2992.61	3556.68	4288.31	3884.16	3569.01	3697.92	4000.18	93.47
May	3985.91	9176.93	2417.81	2594.92	3240.78	4556.83	3438.66	3517.79	3322.45	3607.70	90.51
Jun	5612.10	13635.01	2468.70	2641.88	3798.29	7489.04	3689.97	3586.07	5278.20	3668.48	65.37
Jul	11070.72	28599.56	2925.86	2925.86	5346.73	9703.79	5062.21	6247.29	12706.40		
Aug	23851.22	39015.12	4433.46	5941.07	10547.80	19554.70	13694.57	18304.81	23464.06		
Sep	38261.48	65632.35	12105.31	12105.31	16382.34	32860.34	23550.60	27310.26	35010.86		
Oct	46341.38	73757.23	19705.50	20799.13	27318.21	48199.12	37141.40	38139.87	48583.60		
Nov	37653.83	60367.33	18534.61	27546.80	28982.93	39452.53	33929.52	31056.48	41943.59		
Dec	24911.64	38888.95	10563.49	18251.65	20170.76	25346.65	21757.70	21328.51	27941.36		
	Critical situation: lower than long-term minimum values (LTMIN)										
	Normal condition: within the range of long-term average (LTA) and max (LTMAX) values										
	Low volume situation: lower than long-term average (LTA)										
Unit: Million Cubic Meter (1 MCM= 0.001 Km ³)											

Remarks: the volume of Tonle Sap Lake in 2026 is updated until 01 June 2026.

4. Flash Flood in the Lower Mekong Basin

During the weekly monitoring period from 26 May – 01 June 2026, the LMB received light to moderate rainfall is forecast in some areas in the LMB, with localized heavy rainfall events anticipated in some areas, especially in the lower part of the basin.

According to the Southeast Asia Flash Flood Guidance System (SEAFFGS) and analysis, no flash flood risk over the LMB.

5. Drought Monitoring in the Lower Mekong Basin

5.2. Weekly drought monitoring

Drought monitoring data for 2026 are available from Monday to Sunday every week; thus, the reporting period is normally delayed by one day compared to Flood and Flash Flood reports. We adopt the Index of Soil Water Fraction (ISWF) data obtained from FFGS to represent soil moisture of agricultural indicator for both dry and wet seasons.

- **Weekly Standardised Precipitation Index (SPI1)**

Meteorological indicator shows that from 26 May – 01 June 2026, as shown in **Figure 9**, the LMB was experiencing normal to moderate wet conditions over the region, expect some areas in the northeastern part of Thailand, and Cambodia.

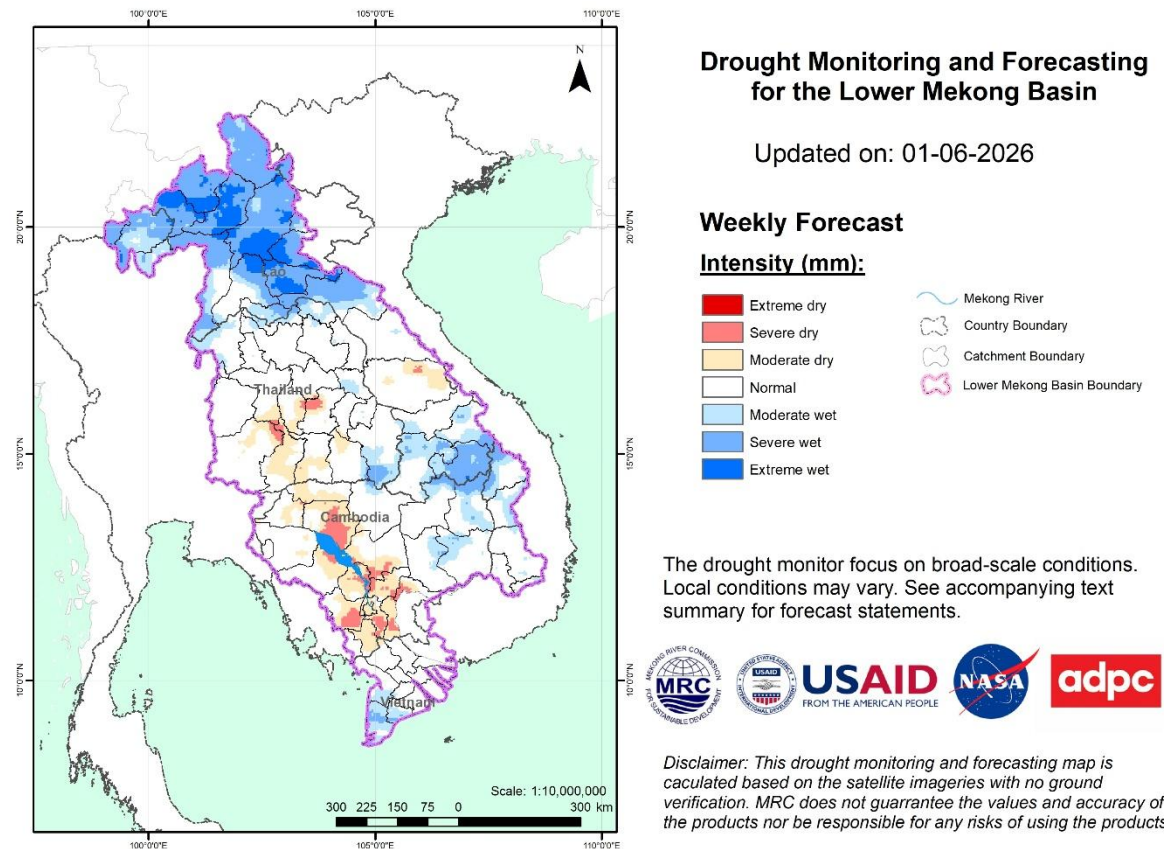
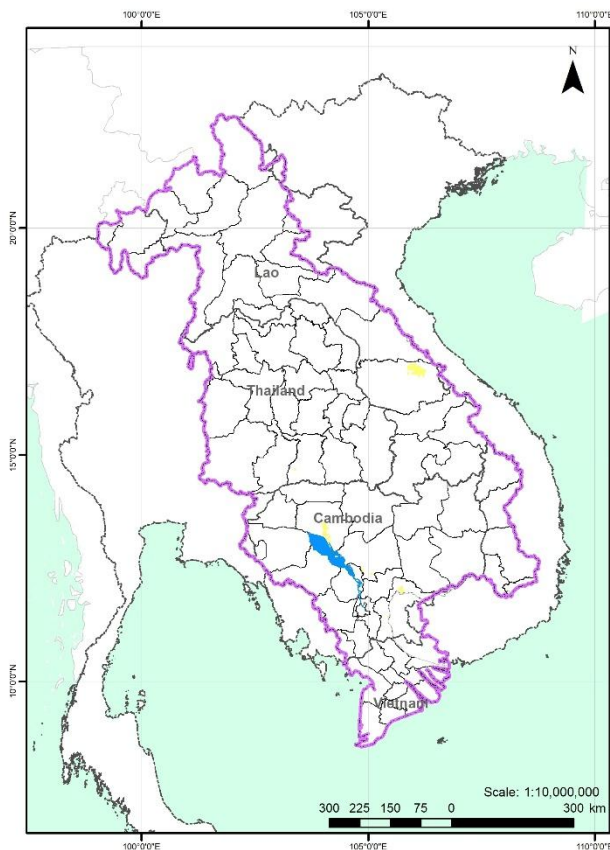


Figure 9: Weekly standardized precipitation index

- **Weekly Index of Soil Water Fraction (ISWF)**

Soil moisture conditions from 26 May – 01 June 2026, as displayed in **Figure 10**, the LMB was experiencing normal to moderate wet conditions in some areas in the lower part.

Note: *The index of soil water fraction presents the current soil water fraction conditions compared with normal month; therefore, it normally shows extremely dry during dry season which is completely different from SPI that is standardized to its specific month of the years. However, this does not mean that the areas are threatened by agricultural drought as generally during transition period of wet and dry seasons and dry season only the irrigated areas are used for agricultural plantation.*

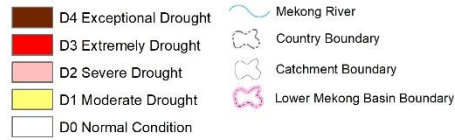


Drought Monitoring and Forecasting for the Lower Mekong Basin

Updated on: 01-06-2026

Weekly Forecast

Intensity (mm):



The drought monitor focus on broad-scale conditions. Local conditions may vary. See accompanying text summary for forecast statements.



Disclaimer: This drought monitoring and forecasting map is calculated based on the satellite imageries with no ground verification. MRC does not guarantee the values and accuracy of the products nor be responsible for any risks of using the products.

Figure 11: Weekly Combined Drought Index

More information on Drought Forecasting and Early Warning (DFEW) as well as the explanation is available here: <http://droughtforecast.mrcmekong.org/templates/view/our-product>. DFEW provides not only weekly monitoring and forecasting information but also a three-month forecast of drought indicators with seasonal outlook which are updated every month based on international weather forecast models. Details on drought forecast are described in section 6.4 of this report.

6 Weather and Water Level Forecast and Flash Flood information

6.1 Rainfall forecast

During 02 – 06 June 2026, the accumulated rainfall over the entire Lower Mekong Basin is distributed with the light to moderate rainfall is forecast in some areas in the LMB, with localized heavy rainfall events anticipated in some areas, especially in the lower part of the basin based on CHIRPS-GFS (**Figure 12**).

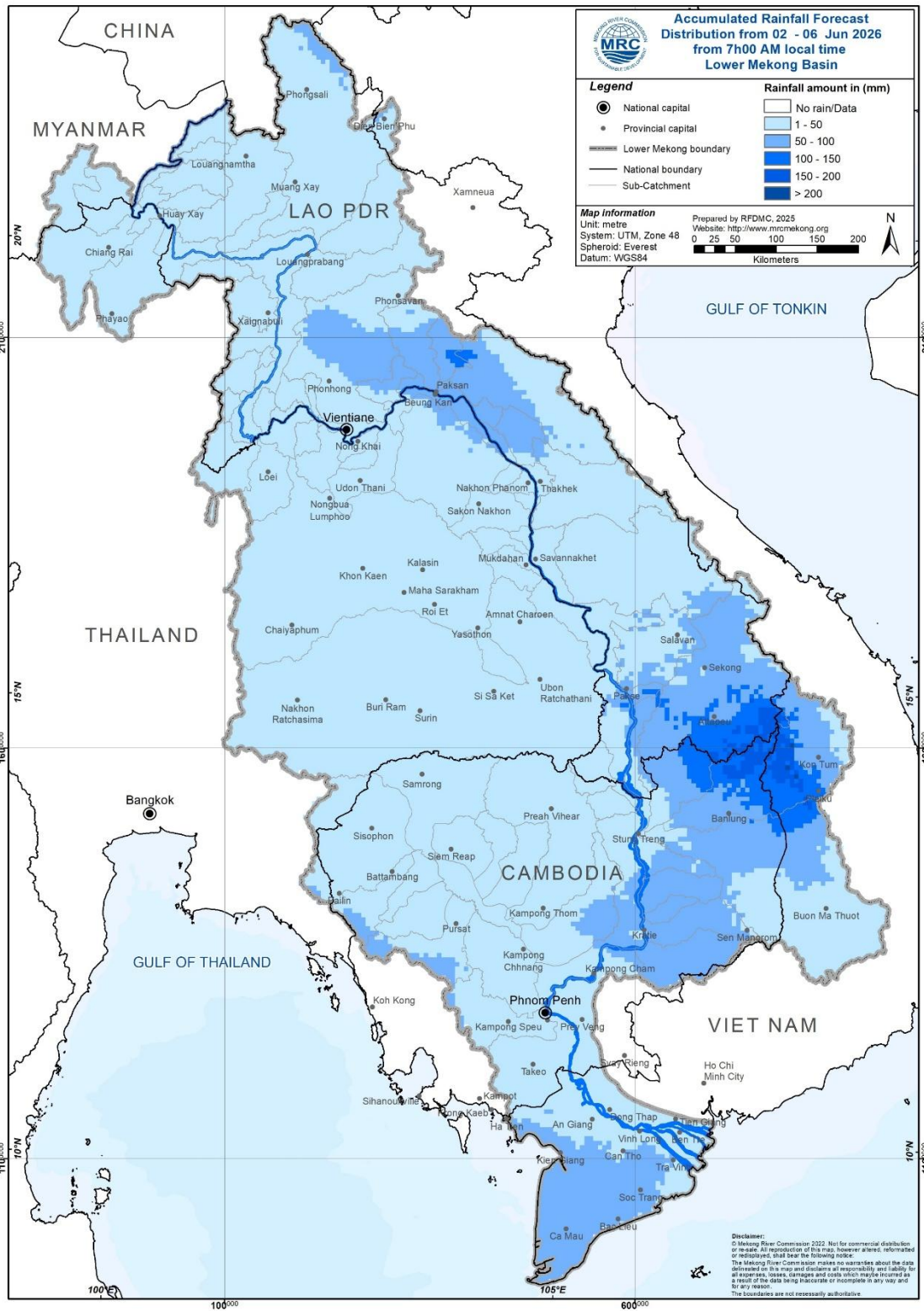


Figure 12: Accumulated rainfall forecast from CHIRP-GFS (02 – 06 June 2026)

6.2 Water level forecast

From 02 to 06 June 2026, water levels at most of stations are expected to be in normal conditions. Water levels at from Luang Prabang to Savannakhet stations are expected to rise. However, from Khong Chiam downstream, they are expected to slightly drop. No stations are expected to reach either alarm or flood levels in the next five days.

In Chiang Saen monitoring station, the water level is expected to be fluctuated with decreasing trend over the forecasting period of 02 – 06 June 2026. The water level in Luang Prabang stations affected by backwater is likely slightly fluctuating from 9.30 m to 9.58 m with increasing trend. Moreover, at Chiang Khan, Vientiane and Nongkhai stations, the water level is expected to increase approximately 1.78 m, 1.09 m, and 0.95 m, respectively.


Along the Mekong mainstream, the water levels at Paksane, Nakhon Phanom, Thakhek, Mukdahan, and Savannakhet stations, water levels are expected to increase next week approximately 1.12 m, 0.30 m, 0.30 m, 0.10 m, and 0.10 m, respectively. In addition, the water levels at Khong Chiam, Pakse, Stung Treng and Kratie stations are expected to decrease approximately -0.11 m, -0.15 m, -0.55 m, and -0.42 m, respectively.

Moving down at Kompong Cham, Phnom Penh (Bassac), Phnom Penh Port, Koh Khel, Neak Luong and Prek kdam stations, water levels are also expected to drop with approximated value of -0.42 m, -0.17 m, -0.18 m, -0.08 m, -0.15 m, and -0.17 m, respectively.

For the Tan Chau station on the Mekong River and Chau Doc station on the Bassac River, water levels will be fluctuating approximately ranging between 0.69 m & 0.16 m and 0.88 m & 0.36 m, respectively, following daily tidal effects from the sea.

The weekly River Monitoring Bulletin and forecasting issued on 01 June 2026 can be found in **Table 2**. Results of the weekly river monitoring and forecasting bulletin are also available at <http://ffw.mrcmekong.org/bulletin.php>

Table 2. Weekly River Monitoring Bulletin.

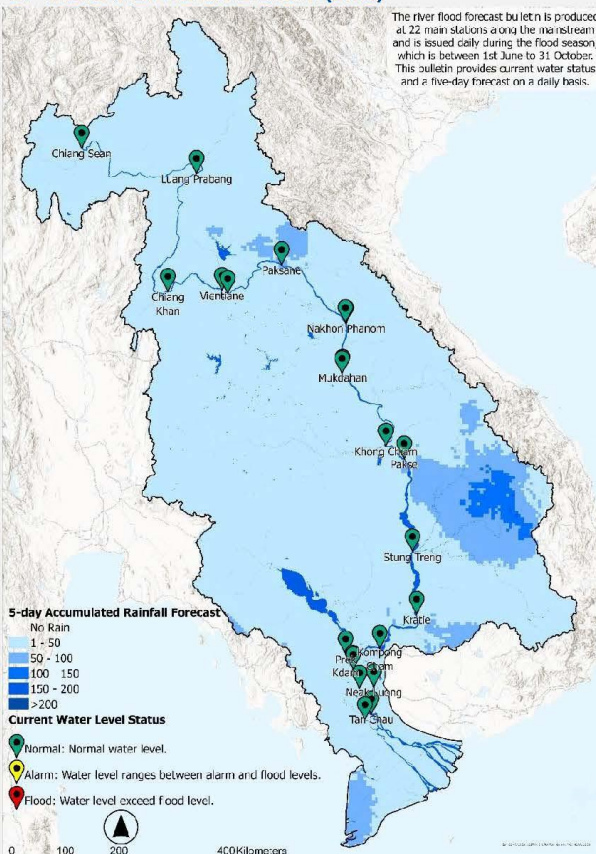


MEKONG RIVER MONITORING AND FORECASTING BULLETIN

Monitoring on 01 June 2026, 7:00 (UTC+7)

Highlights: The water levels at *all stations* along the Mekong mainstream are in *normal conditions*. The total accumulated reversed flow volume into Tonle Sap Lake (TSL) is still **00.00 Km³**.

THE FORECASTING HYDROLOGICAL STATION MAP OF THE LOWER MEKONG BASIN (LMB)



The river flood forecast bulletin is produced at 22 main stations along the mainstream and is issued daily during the flood season, which is between 1st June to 31 October. This bulletin provides current water status and a five-day forecast on a daily basis.

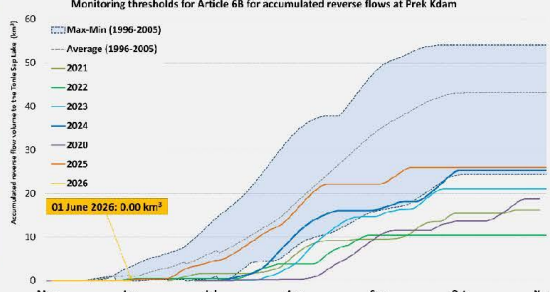
Remarks: The river flood forecast bulletin is produced at 22 main stations along the mainstream and is issued daily during the flood season, which runs from 1st June to 31st October. This bulletin provides information on the current water level status and a five-day forecast on a daily basis.

CURRENT WATER LEVEL STATUS

Monitoring Station	Water Level	Flow Threshold (PMFM*6C)
Chiang Saen	Normal	Normal
Luang Prabang**	Normal	-
Chiang Khan	Normal	-
Vientiane	Normal	Normal
Nongkhai	Normal	-
Paksane	Normal	-
Nakhon Phanom	Normal	-
Thakhek	Normal	-
Mukdahan	Normal	-
Savannakhet	Normal	-
Khong Chiam	Normal	Normal
Pakse	Normal	Normal
Stung Treng	Normal	Normal
Kratie	Normal	Normal
Kompong Cham	Normal	-
Phnom Penh (Bassac)	Normal	-
Phnom Penh Port	Normal	-
Koh Khel	Normal	-
Neak Luong	Normal	-
Prek Kdam	Normal	-
Tan Chau	Normal	-
Chau Doc	Normal	-

* Procedures for Maintenance of Flows on the Mainstream
** Luang Prabang station is influenced by hydropowers at its upstream and downstream

REVERSE FLOW VOLUME PREK K DAM (PMFM*6B)



Monitoring thresholds for Article 6B for accumulated reverse flows at Prek Kdam

Flow volumes on 01 June 2026:	00.00 Km ³
Minimum reverse flow volume (1996-2005):	23.848 Km ³
Average reverse flow volume (1996-2005):	42.84 Km ³
Maximum reverse flow volume (1996-2005):	54.046 Km ³

*Procedures for Maintenance of Flows on the Mainstream

WATER LEVEL STATUS DEFINITIONS

Normal	Normal water level.
Alarm	Alarm when the water level ranges between alarm and flood levels.
Flood	Flood is when the flood level exceeds. A flood level is determined by member countries.

MRC Secretariat, Vientiane, Lao PDR | E: mrcs@mrcmekong.org | T: +856 21 263 263

MRC Regional Flood and Drought Management Centre, Phnom Penh, Cambodia | E: floodforecast@mrcmekong.org | T: +855 23 425 353

<http://www.mrcmekong.org/>
http://fw.mrcmekong.org/bulletin_wet.php
<http://fw.mrcmekong.org/reportflood.php>
<https://pmfm.mrcmekong.org/>

DISCLAIMER

This information is supplied as a service to the governments of the MRC Member Countries so that it may be used as a tool within existing national disaster forecast and warning systems.

Forecasting from 02 to 06 June 2026

Highlights: Light to moderate rainfall are likely to occur in several parts of LMB. Water levels at from Luang Prabang to Savannakhet are expected to rise. However, from Khong Chiam downstream, they are expected to slightly drop.

Forecasting Station	24 h Observed Rainfall (mm)	Zero gauge above M.S.L (m)	Observed Water Level against zero gauge (m)		Forecasted Water Level (m)					Alarm Level (m)	Flood Level (m)	Low-lying flood level (m)*	Forecasted Water Levels Change in 5 days (m)	Max. Water levels change within next 5 days (m)	Min. distance to alarm level within next 5 days (m)	Min. distance to flood level within next 5 days (m)	
			31-May	01-Jun	02-Jun	03-Jun	04-Jun	05-Jun	06-Jun								
Jinghong	0.5	-	537.10	↑ 537.21	-	-	-	-	-	-	-	-	-	-	-	-	-
Chiang Saen	0.0	357.110	3.09	↑ 3.34	↑ 3.47	→ 3.40	→ 3.31	↓ 3.18	↑ 3.08	11.50	12.80	-	↓ -0.26	-0.26	8.03	9.33	
Luang Prabang	10.0	267.195	9.08	↑ 9.30	↑ 9.51	↑ 9.74	↑ 9.88	→ 9.78	↓ 9.58	17.50	18.00	-	↑ 0.28	0.58	7.62	8.12	
Chiang Khan	0.0	194.118	5.17	↑ 5.50	↑ 5.89	↑ 6.37	↑ 6.77	↑ 7.15	↑ 7.28	14.50	16.00	-	↑ 1.78	1.78	7.22	8.72	
Vientiane	0.0	158.040	2.96	→ 3.01	→ 3.03	↑ 3.17	↑ 3.46	↑ 3.78	↑ 4.10	11.50	12.50	-	↑ 1.09	1.09	7.40	8.40	
Nongkhai	0.0	153.648	2.12	↓ 2.08	→ 2.07	→ 2.10	↑ 2.39	↑ 2.69	↑ 3.03	11.40	12.20	7.35	↑ 0.95	0.95	8.37	9.17	
Paksane	0.0	142.125	3.53	↓ 3.37	→ 3.42	↑ 3.58	↑ 3.77	↑ 4.13	↑ 4.49	13.50	14.50	-	↑ 1.12	1.12	9.01	10.01	
Nakhon Phanom	0.0	130.961	2.74	↓ 2.67	→ 2.60	→ 2.65	→ 2.70	↑ 2.81	↑ 2.97	11.50	12.00	9.04	↑ 0.30	0.30	8.53	9.03	
Thakhek	0.0	129.629	4.02	↓ 3.90	→ 3.84	→ 3.89	→ 3.95	↑ 4.06	↑ 4.20	13.00	14.00	-	↑ 0.30	0.30	8.80	9.80	
Mukdahan	0.0	124.219	3.18	↓ 2.98	↓ 2.84	→ 2.82	→ 2.88	→ 2.94	↑ 3.08	12.00	12.50	-	↑ 0.10	-0.17	8.92	9.42	
Savannakhet	0.0	124.219	1.57	↓ 1.49	↓ 1.33	→ 1.32	→ 1.38	→ 1.44	↑ 1.59	12.00	13.00	-	↑ 0.10	-0.17	10.41	11.41	
Khong Chiam	0.0	89.030	3.73	↓ 3.57	→ 3.49	→ 3.42	→ 3.42	→ 3.48	→ 3.46	13.50	14.50	-	↓ -0.11	-0.15	10.02	11.02	
Pakse	0.0	86.490	2.60	↓ 2.44	↓ 2.30	→ 2.20	→ 2.18	↑ 2.24	→ 2.29	11.00	12.00	-	↓ -0.15	-0.15	8.71	9.71	
Stung Treng	0.0	36.790	3.64	↓ 3.48	↓ 3.37	→ 3.36	→ 3.31	→ 3.30	→ 3.33	10.70	12.00	-	↓ -0.15	-0.11	7.33	8.63	
Kratie	0.0	-1.080	9.48	↓ 9.42	↓ 9.14	↓ 8.96	→ 8.94	↓ 8.88	→ 8.87	22.00	23.00	-	↓ -0.55	-0.28	12.86	13.86	
Kompong Cham	0.0	-0.930	3.90	↑ 3.94	↓ 3.89	↓ 3.67	↓ 3.58	↓ 3.55	→ 3.52	15.20	16.20	-	↓ -0.42	-0.05	11.31	12.31	
Phnom Penh (Bassac)	0.0	-1.020	2.08	↑ 2.14	→ 2.13	↓ 2.09	↓ 2.01	→ 1.99	→ 1.97	10.50	12.00	-	↓ -0.17	-0.01	8.37	9.87	
Phnom Penh Port	nr	0.070	1.09	↑ 1.16	→ 1.14	↓ 1.10	↓ 1.02	→ 1.00	→ 0.98	9.50	11.00	-	↓ -0.18	-0.02	8.36	9.86	
Koh Khel	2.3	-1.000	1.98	→ 2.00	→ 2.01	→ 2.00	↓ 1.96	↑ 1.93	→ 1.92	7.90	8.40	-	↓ -0.08	-0.08	5.89	6.39	
Neak Luong	0.0	-0.330	1.18	→ 1.20	→ 1.20	↓ 1.16	↓ 1.11	↓ 1.07	→ 1.05	7.50	8.00	-	↓ -0.15	-0.15	6.30	6.80	
Prek Kdam	5.2	0.080	1.45	→ 1.45	→ 1.45	↓ 1.38	↓ 1.32	→ 1.30	→ 1.28	9.50	10.00	-	↓ -0.17	-0.17	8.05	8.55	
Tan Chau	nr	0.000	1.09	↓ 0.69	↓ 0.41	↓ 0.13	↓ 0.00	↑ 0.08	↑ 0.16	3.50	4.50	-	↓ -0.53	-0.69	3.09	4.09	
Chau Doc	5.0	0.000	0.98	↓ 0.88	↓ 0.61	↓ 0.33	↓ 0.20	↑ 0.28	↑ 0.36	3.00	4.00	-	↓ -0.52	-0.68	2.39	3.39	

*: Low-lying flood levels have been requested by Thailand to be included for specific stations including Nongkhai (7.35 m), Nakhon Phanom (9.04 m) and Beung Kan (7.58 m) stations

WATER LEVEL FORECASTING DEFINITIONS

↑	Rising water level.
→	Stable water level: stable water level is defined as a daily change of less than 10cm from Chaing Saen to Savannakhet; less than 5cm at Pakse and Stung Treng; and no more than 3cm from Kratie downstream.
↓	Falling water level.
X	No data available.
Alarm stage	Alarm stage is when the water level ranges between alarm and flood levels.
Flood stage	Flood stage is when the flood level exceeds. A flood level is determined by member countries.

NOTES

- On 01 June, water levels at all stations along the Mekong mainstream are in **normal conditions**. The **total accumulated reverse flow** to TSL is **00.00 Km³**.
- In the **next 5 days**, **light to moderate rainfall** is forecast in some areas in the LMB, with **localized heavy rainfall events** anticipated in some areas, especially in the **lower part of the basin**.
- For **02 – 06 June**, Water levels at from **Luang Prabang to Savannakhet** stations are expected to **rise**. However, from **Khong Chiam downstream**, they are expected to **slightly drop**. **No stations are expected to reach either alarm or flood levels in the next five days**.

7 Summary and Possible Implications

7.1. Rainfall and its forecast

In the period of 26 May – 01 June 2026, light to moderate rainfall that is expected to occur in some areas in the LMB.

During 02 – 08 June 2026, light to moderate rainfall is forecast in some areas in the LMB, with localized heavy rainfall events anticipated in some areas, especially in the lower part of the basin.

7.2. Water level and its forecast

At 22 key monitoring stations along the Mekong mainstream from 26 May – 01 June 2026, Water levels at all stations along the Mekong mainstream are in normal conditions. The total accumulated reverse flow to TSL is 00.00 Km³. However, the 6 monitoring stations remain in normal condition with respect to the flow threshold (PMFM Thresholds). It is also the same condition for Tan Chau and Chau Doc monitoring stations, which are significantly influenced by sea tidal fluctuation.

In the period of 02 – 06 June 2026, water levels at from Luang Prabang to Savannakhet stations are expected to rise. However, from Khong Chiam downstream, they are expected to slightly drop. No stations are expected to reach either alarm or flood levels in the next five days.

7.3. Flash flood and its trends

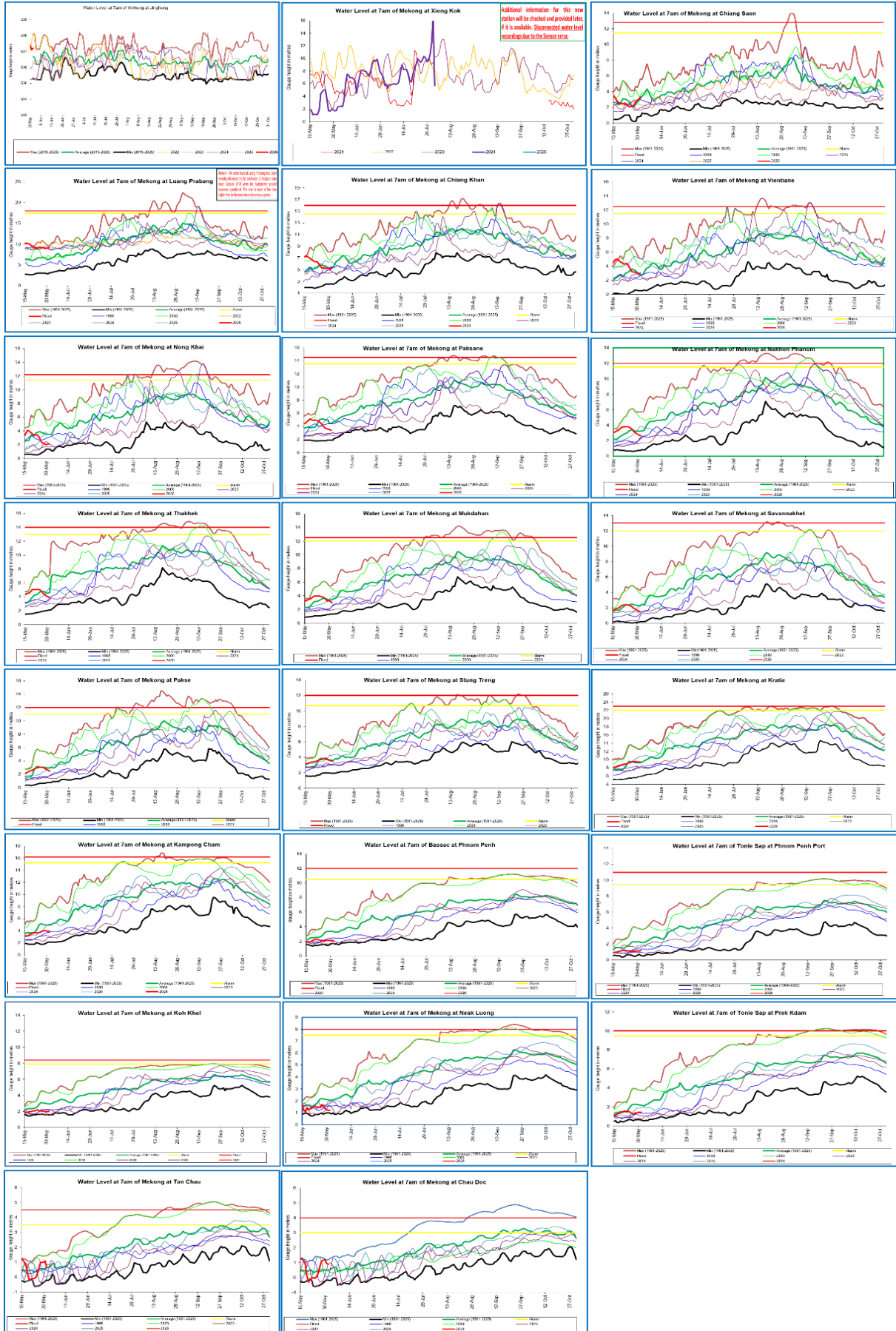
With the predicted of rainfall for the coming week as mentioned earlier in [section 6.1](#), major flash floods are not likely to happen in the LMB.

7.4. Drought condition and its forecast

During 26 May – 01 June 2026, according to the Combined Drought Indicator (CDI), no significant drought conditions were observed across the majority of the Lower Mekong Basin (LMB). However, localized drought conditions persisted in parts of Savannakhet Province (Lao PDR) and Siem Reap Province (Cambodia)

The weekly forecast from 02 - 08 June 2026 indicates that no drought conditions are expected across the Lower Mekong Basin (LMB) during the coming week based on the Combined Drought Index.

Annex A: Weekly water level monitoring at 22 key stations



Annex B: Tables for weekly updated water levels and rainfall at the Key Stations

Table A1: Weekly observed water levels

2026	Jinghong	Chiang Saen	Luang Prabang	Chiang Khan	Vientiane	Nongkhai	Paksane	Nakhon Phanom	Thakhek	Mukdahan	Savannakhet	Khong Chiam	Pakse	Stung Treng	Kratie	Kompong Cham	Phnom Penh (Bassac)	Phnom Penh Port	Koh Khel	Neak Luong	Prek Kdam	Tan Chau	Chau Doc
26-05-2026	536.19	2.15	9.18	2.15	3.49	2.66	4.43	3.59	4.86	3.82	2.24	4.27	3.08	3.82	9.38	3.82	1.98	0.97	2.05	1.42	1.32	0.25	0.31
27-05-2026	536.70	2.10	9.13	5.36	3.19	2.32	4.06	3.41	4.66	3.74	2.14	4.20	3.06	3.86	9.54	3.90	2.09	1.07	2.02	1.70	1.25	0.65	0.75
28-05-2026	536.90	2.34	9.08	5.20	3.15	2.18	3.79	3.17	4.43	3.55	1.97	4.10	3.00	3.85	9.63	4.00	2.09	1.08	2.04	1.60	1.35	0.98	1.11
29-05-2026	536.85	2.74	8.96	5.18	3.12	2.12	3.65	3.00	4.26	3.27	1.80	3.95	2.82	3.72	9.55	4.06	2.10	1.09	2.02	1.36	1.34	1.04	1.17
30-05-2026	537.42	2.92	9.08	5.28	2.99	2.01	3.57	2.83	4.09	3.30	1.71	3.80	2.70	3.66	9.46	4.02	2.11	1.13	2.00	1.25	1.45	0.97	1.14
31-05-2026	537.10	3.09	9.08	5.17	2.96	2.12	3.53	2.74	4.02	3.18	1.57	3.73	2.60	3.64	9.48	3.90	2.08	1.09	1.98	1.18	1.45	0.75	0.99
01-06-2026	537.21	3.34	9.30	5.50	3.01	2.08	3.37	2.67	3.90	2.98	1.49	3.57	2.44	3.48	9.42	3.94	2.14	1.16	2.00	1.20	1.45	0.69	0.88
Flood level		12.80	18.00	16.00	12.50	12.00	14.50	12.50	14.00	12.50	13.00	14.50	12.00	12.00	23.00	16.20	12.00	11.00	7.90	8.00	10.00	4.50	4.00

Table A2: Weekly observed rainfall

2026	Jinghong	Chiang Saen	Luang Prabang	Chiang Khan	Vientiane	Nongkhai	Paksane	Nakhon Phanom	Thakhek	Mukdahan	Savannakhet	Khong Chiam	Pakse	Stung Treng	Kratie	Kompong Cham	Phnom Penh (Bassac)	Phnom Penh Port	Koh Khel	Neak Luong	Prek Kdam	Tan Chau	Chau Doc	
26-05-2026	0	4.7	10.4	0	0	0	0	11.5	0	0	0	10.5	0	7.5	1.7	0	0	0	0	0	0	0	0	0
27-05-2026	0	0	0	2	0	0	0	14.3	5.9	0	0	0	0	0	10.4	0	11.7	0	0	0	0	0	0	0
28-05-2026	0.5	0	0	0	0	0	50.3	0	0	0	0	0	0	0	0	0	0	0	0	0	0	0	0	0
29-05-2026	0	37.2	0	0	16.6	9.2	1.8	36.1	47	5.7	5	5.5	1	59	1.1	4	0	0	0	1.2	0	0	0	39
30-05-2026	2.5	70.7	0	6.5	0	6	2.2	0.2	0	38.6	31.4	42	0	24.5	34	9	0	0	66	2.6	15.3	0	0	0.1
31-05-2026	5.5	10.4	0	7	0	0	2	10.1	0	0.8	0	45	23.8	65	1	2.5	0	0	4.5	83.4	0	0	0	72.9
01-06-2026	0.5	0	10	0	0	0	0	0	0	0	0	0	0	0	0	0	0	0	2.3	0	5.2	0	0	5
Sum	9.0	123.0	20.4	15.5	16.6	15.2	56.3	72.2	52.9	45.1	36.4	103.0	24.8	156.0	48.2	15.5	11.7	0.0	72.8	87.2	20.5	0.0	0	117.0



Mekong River Commission Secretariat

P. O. Box 6101, 184 Fa Ngoum Road, Unit 18 Ban Sithane Neua, Sikhottabong District, Vientiane 01000, Lao PDR
Tel: +856 21 263 263. Fax: +856 21 263 264 www.mrcmekong.org
© Mekong River Commission 2025