



**Mekong River Commission**

# **Weekly Wet Season Situation Report in the Lower Mekong River Basin**

**25 June – 01 July 2024**

Prepared by  
The Regional Flood and Drought Management Centre  
02 July 2024

*The MRC is funded by contributions from its Member Countries and Development Partners, including Australia, Belgium, the European Union, Finland, France, Germany, Japan, Luxembourg, the Netherlands, Sweden, Switzerland, the United States and the World Bank.*

**Copyright © Mekong River Commission, 2024**

First published (2020)

Some rights reserved.

This work is the product of the Mekong River Commission Secretariat. While all efforts are made to present accurate information, the Secretariat does not guarantee the accuracy of the data included in this work. The boundaries, colours, denomination, and other information shown on any map in this work do not imply any judgement on the part of the MRC concerning the legal status of any territory or the endorsement or acceptance of such boundaries.

Nothing herein shall constitute or be considered to be a limitation upon or waiver of the privileges and immunities of the MRC, all of which are specifically reserved.

This publication may be reproduced in whole or in part and in any form for educational or non-profit purposes without special permission from the copyright holder, provided acknowledgement of the source is made and notification is sent to the MRC. The MRC would appreciate receiving a copy of any publication that uses this publication as a source. This publication cannot be used for sale or for any other commercial purpose whatsoever without permission in writing from the MRC.

**Title:** Weekly wet season situation report in the Lower Mekong River Basin for 25 June – 01 July 2024.

ISSN: 1728-3248

Keywords: Monitoring/forecasting/weather/the Mekong/the Tonle Sap Lake

For bibliographic purposes, this volume may be cited as:

Mekong River Commission. (2024). *Weekly wet season situation report in the Lower Mekong River Basin for 25 June – 01 July 2024*. Vientiane: MRC Secretariat.

Information on MRC publications and digital products can be found at  
<http://www.mrcmekong.org/publications/>

**All queries on rights and licenses should be addressed to:**

Mekong River Commission

Documentation and Learning Centre

184 Fa Ngoum Road, Unit 18, Ban Sithane Neua, Sikhottabong District, Vientiane 01000, Lao PDR

Telephone: +856-21 263 263 | E-mail: [mrcs@mrcmekong.org](mailto:mrcs@mrcmekong.org) | [www.mrcmekong.org](http://www.mrcmekong.org)

# Content

Content.....	i
List of Figures.....	ii
List of Tables.....	iii
Key Messages .....	iv
1 Introduction.....	1
2 General Weather Patterns .....	2
3. Rainfall and Water Level Monitoring .....	3
3.1. Rainfall monitoring .....	3
3.2. Water level monitoring.....	5
4. Flash Flood in the Lower Mekong Basin.....	9
5. Drought Monitoring in the Lower Mekong Basin .....	11
5.2. Weekly drought monitoring from 27 June to 1 July 2024.....	11
6 Weather and Water Level Forecast and Flash Flood information .....	14
6.1 Rainfall forecast .....	14
6.2 Water level forecast.....	16
6.3 Flash Flood Information .....	19
6.4 Drought forecast .....	19
7 Summary and Possible Implications.....	20
7.1. Rainfall and its forecast .....	20
7.2. Water level and its forecast .....	20
7.3. Flash flood and its trends.....	20
7.4. Drought condition and its forecast .....	20
Annex A: Weekly water level monitoring at the 22 key stations.....	22
Annex B: Tables for weekly updated water levels and rainfall at the Key Stations.....	25
Annex C: Performance of the weekly flood forecasting .....	29



## List of Figures

Figure 1: Weather conditions over the LMB .....	2
Figure 2: Outlook of wet and dry conditions over the Asian countries by ASMC.....	3
Figure 3: One tropical storm risk observed on 01 July 2024.....	3
Figure 4: Weekly rainfall distribution over the LMB during 25 June – 01 July 2024 .....	4
Figure 5: The key stations along LMB for river flood forecasting .....	6
Figure 6. Water level at the Jinghong hydrological station up to 01 July 2024. ....	7
Figure 7: Seasonal change of inflows and outflows of Tonle Sap Lake.....	8
Figure 8. The seasonal change in monthly flow volume of Tonle Sap Lake.....	8
Figure 9. Flash Flood Guidance for the next 1-hr, 3-hr, and 6-hr on 24 June.....	11
Figure 10: Weekly standardized precipitation index from June 25 to July 1. ....	12
Figure 11: Weekly Index of Soil Water Fraction from June 25 to July 1. ....	13
Figure 12: Weekly Combined Drought Index from June June 25 to July 1. ....	14
Figure 13: Accumulated rainfall forecast from CHIRP-GFS (02 – 06 July 2024).....	15
Figure 14. Monthly drought forecast for July, August, and September 2024. ....	19

## List of Tables

Table 1. The monthly change in the flow volume of Tonle Sap Lake. ....	9
Table 2. Detected low-risk flash flood in the LMB on 26 June.....	11
Table 3. River Monitoring and Forecasting Bulletin.....	17

# Key Messages

**Key messages for this weekly report are presented below.**

## **Rainfall monitoring and forecast**

- In the period of 25 June - 01 July 2024, there has been light to heavy rainfall has been observed over the LMB. Especially, during 29 June – 01 July, heavy and very heavy rainfall has been observed over the LMB in Chiang Khan, Muong Mai, Ban Phone Si, Muong Kao, and Prek Kdam.
- During 02 – 08 July 2024, the accumulated rainfall over the entire Lower Mekong Basin is distributed with light to heavy rain. Moderate rainfall is expected in the central part of Laos, the southwestern and northeastern parts of Cambodia, and the 3S Basin of Sekong, Sesan, and Srepok. However, heavy rainfall may likely occur in the upper part of the 3S Basin during 03–05 July.

## **Water level monitoring and forecast**

- At 22 key monitoring stations along the Mekong mainstream from 25 June – 01 July 2024, water levels are normal, and the flow threshold (PMFM 6C) are under normal conditions. It is also the same condition for Tan Chau and Chau Doc monitoring stations, which are significantly influenced by sea tidal fluctuation.
- In the period of 02 – 06 July 2024, Water levels are forecasted to be slightly decreasing and stable at upper stretches of LMB from Chiang Saen to Khong Chiam stations. However, water level at other remaining stations from Pakse to Prek Kdam will rise except for Koh Khel and Neak Luong. At Tan Chau and Chau Doc stations, the water levels are predicted to be also fluctuated, resulting from the influence of sea tidal patterns. Water levels at most of the stations are expected to be below their long-term averages (LTAs) except for Luang Prabang station.

## **Drought condition and forecast**

- During 25 June-1 July 2024, the LMB was st moderate drought in some areas of the middle and lower parts. Moderate drought specifically covered some areas of Kampong Cham, Kampongthom, Kratie, Mondulkiri, Prey Veng, Khammuan, Savanakheth, Salavan, Champasack, Sakon Nakhon, Kalasin, Mukdahan, Roi Et, Nakhon Ratchasima, and Gia Lai.
- From July to September 2024, it is expected to bring drought conditions to certain areas of the LMB. In July, eastern Cambodia, 3S area, and northern Lao PDR are the most severe areas. In August, severe and exceptional droughts are forecasted for the upper part of the LMB. Other areas are likely normal or wet. In September, moderate to severe drought is forecasted for the northern Cambodia and 3S area, while other areas are likely normal or wet. Severe drought is likely taking place in some areas of Otdar

Meanchey, Preah Vihear, Stung Treng, Ratanakiri, and Kampong Thom of Cambodia, Xekong and Attapu of Lao PDR and Kon Tum and Gia Lai of Viet Nam.

# 1 Introduction

This Weekly Wet Season Situation Report presents a preliminary analysis of the weekly hydrological situation in the Lower Mekong River Basin (LMB) for **25 June – 01 July 2024**. The trend and outlook for water levels are also presented.

This analysis is based on the daily hydro-meteorological data provided by the Mekong River Commission (MRC) Member Countries – Cambodia, Lao PDR, Thailand, and Viet Nam – and on satellite data. The water level indicated in this report refers to an above zero gauge of each station.

The report covers the following topics that are updated weekly:

- General weather patterns, including rainfall patterns over the LMB.
- Water levels in the LMB, including in the Tonle Sap Lake.
- Flash flood and drought situation in the LMB.
- Weather, water level and flash flood forecast, and
- Possible implications.

Mekong River water levels are updated daily and can be accessed from:

<http://ffw.mrcmekong.org/bulletin.php>.

Drought monitoring and forecasting information is available at:

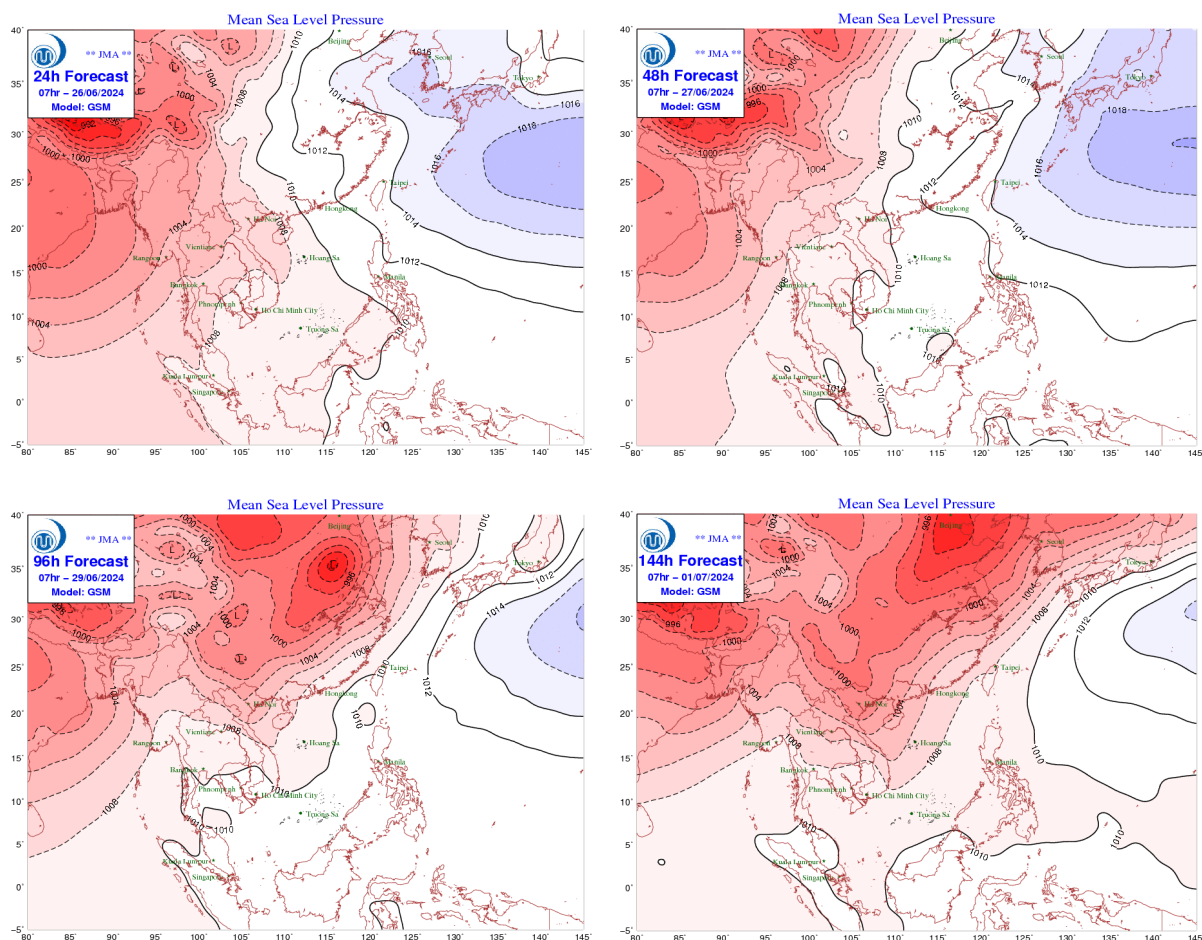
<http://droughtforecast.mrcmekong.org>

Flash flood information is accessible at: <http://ffw.mrcmekong.org/ffg.php>

## 2 General Weather Patterns

During the last week, the Lower Mekong Basin was influenced by the low-pressure cell and the moderate southwest monsoon. The light to heavy rainfall has been only observed over this region.

**Figure 1** presents the mean sea level pressure over the region. It is forecasted that the moderate southwest monsoon and the low pressure will be impacted on the Lower Mekong Basin from 02 - 08 July. Therefore, in the upcoming seven days, the Lower Mekong Basin is expected to experience light to heavy rainfall, especially heavy rain that may potentially occur in the upper part of the 3S Basin of Sekong, Sesan, and Srepok.



**Figure 1: Weather conditions over the LMB**

According to the ASEAN Specialised Meteorological Centre (ASMC, <http://asmc.asean.org/home/>), the subseasonal weather outlook (24 June – 07 July 2024) indicates that entire Lower Mekong Basin (LMB) is likely in in wetter condition and there is no warmer conditions in the LMB during abovementioned period. **Figure 2** shows the outlook of weather condition from 24 June – 07 July 2024 in Southeast Asia based on results from the NCEP model (National Centres for Environmental Prediction).

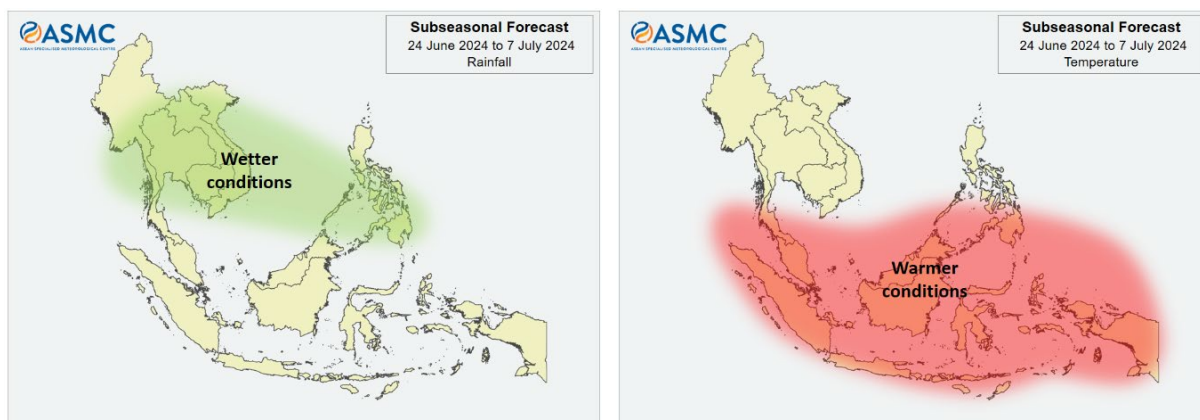


Figure 2: Outlook of wet and dry conditions over the Asian countries by ASMC.

Based on the tropical storm risk (TS) (<https://www.tropicalstormrisk.com/>), there is no active NW pacific system as of 01 July 2024 as displayed in Figure 3.

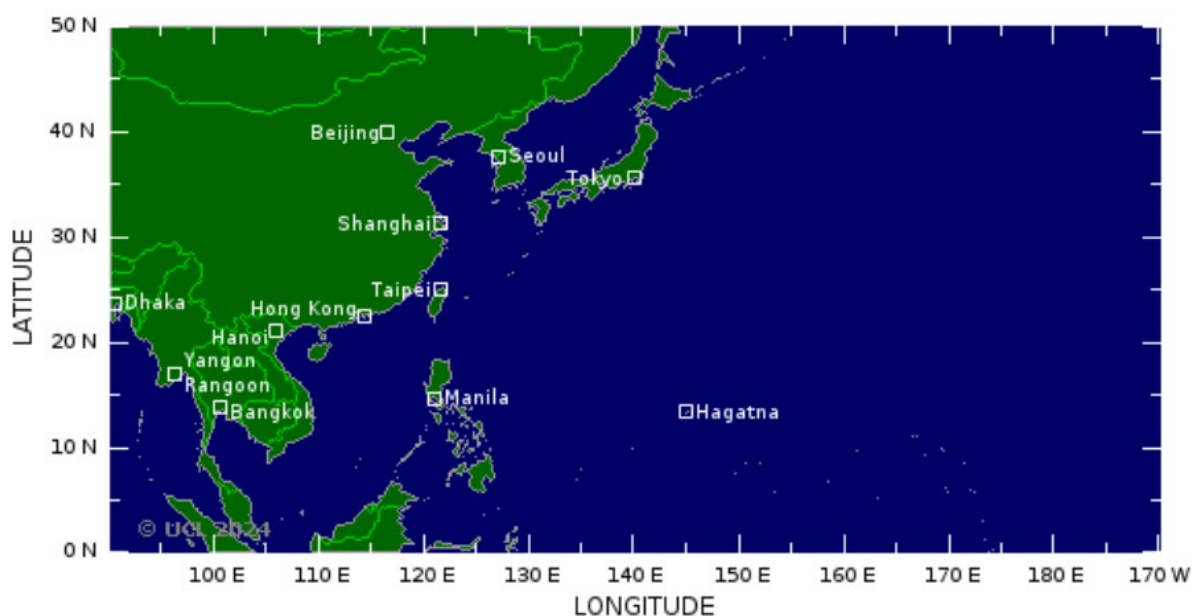


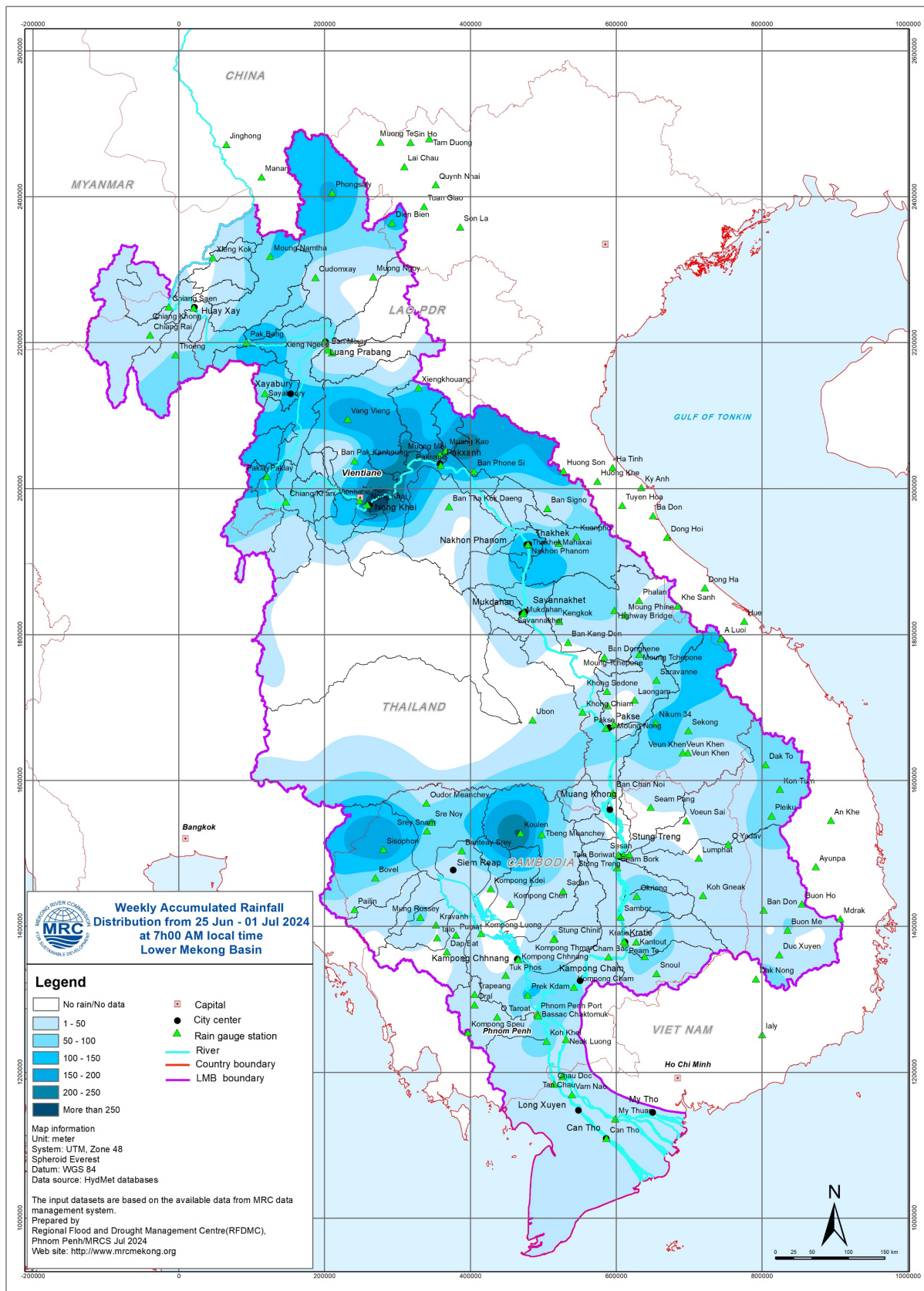
Figure 3: One tropical storm risk observed on 01 July 2024

### 3. Rainfall and Water Level Monitoring

#### 3.1. Rainfall monitoring

The weekly accumulated rainfall is based on the observed data provided by the MRC Member Countries – Cambodia, Lao PDR, Thailand, and Viet Nam – from 25 June - 01 July 2024 (Figure 4). There has been light to heavy rainfall has been observed over the LMB. Especially, during 29 June – 01 July, heavy and very heavy rainfall has been observed over the LMB in Chiang Khan, Muong Mai, Ban Phone Si, Muong Kao, and Prek Kdam.





**Figure 4: Weekly rainfall distribution over the LMB during 25 June – 01 July 2024**



### 3.2. Water level monitoring

The hydrological regimes of the Mekong mainstream are illustrated by recorded water levels and flows at key mainstream stations: at Chiang Saen to capture mainstream flows entering from the Upper Mekong Basin (UMB); at Vientiane to present flows generated by climate conditions in the upper part of the LMB; at Pakse to investigate flows influenced by inflows from the larger Mekong tributaries; at Kratie in Cambodia to capture overall flows of the Mekong Basin; and at Viet Nam's Tan Chau and Chau Doc to monitor flows to the Delta.

The key stations along the LMB and their respective model application for River Flood Forecasting during the wet season from June to October and River Monitoring during the dry season from November to May are presented in **Figure 5**. The hydrograph for each key station is available from the MRC's River Flood Forecasting: <http://ffw.mrcmekong.org/overview.php>.

During 25 June – 01 July 2024, the observed water level (WL) at Jinghong hydrological station<sup>1</sup>, was almost constant and ranges between 537.43 m and 536.00 m, which are corresponding to the outflow between 2,520.00 m<sup>3</sup>/s to 1,370.00 m<sup>3</sup>/s (recorded on 7:00 am), respectively (**Figure 6**). The water level in Chiang Saen station also indicated a slight fluctuation ranging from 3.47 m to 3.36 m. At the same period, the water level in Luang Prabang station also slightly increased with an approximate value of 0.62 m from 9.46 m to 10.08 m as compared to the previous week. Moreover, at Chiang Khan station, water level has also increased from 6.48 m to 7.88 m.

During the same period, water levels at all other stations have increased. The water levels observed at Vientiane, Nongkhai, Paksane, Nakhon Phanom, Thakhek, Mukdahan, Savannakhet, Khong Chiam, Pakse, Stung Treng and Kratie have been increasing from 3.57 m to 5.16 m, 3.3 m to 5.02 m, 4.0 m to 6.89 m, 3.12 m to 5.42 m, 4.37 m to 6.57 m, 3.27 m to 4.98 m, 1.72 m to 3.37 m, 3.64 m to 5.2 m, 2.64 m to 3.82 m, 3.97 m to 4.4 m, and 5.59 m to 10.55 m, respectively from the previous week.

Moving down to the floodplain area at Kampong Cham, Phnom Penh (Bassac), Phnom Penh Port, Koh Khel, Neak Luong and Prek Kdam the water levels have increased from 3.96 m to 4.84 m, 2.2 m to 2.68 m, 1.12 m to 1.55 m, 2.24 m to 3.1 m, 1.42 m to 2.15 m and 1.34 m to 1.78 m, respectively from previous week.

Similar to the previous week, the water levels from 25 June to 01 July 2024 at Viet Nam's Tan Chau and Chau Doc fluctuated between their LTA values due to daily tidal effects from the sea. At the Tan Chau station, the water levels varied between 0.05 m and 0.86 m, while at the Chau Doc station, they ranged from 0.21 m to 0.66 m.

---

<sup>1</sup> Near-real time data of hydro-meteorological monitoring at the Jinghong hydrological station is available at <https://portal.mrcmekong.org/monitoring/river-monitoring-telemetry>.

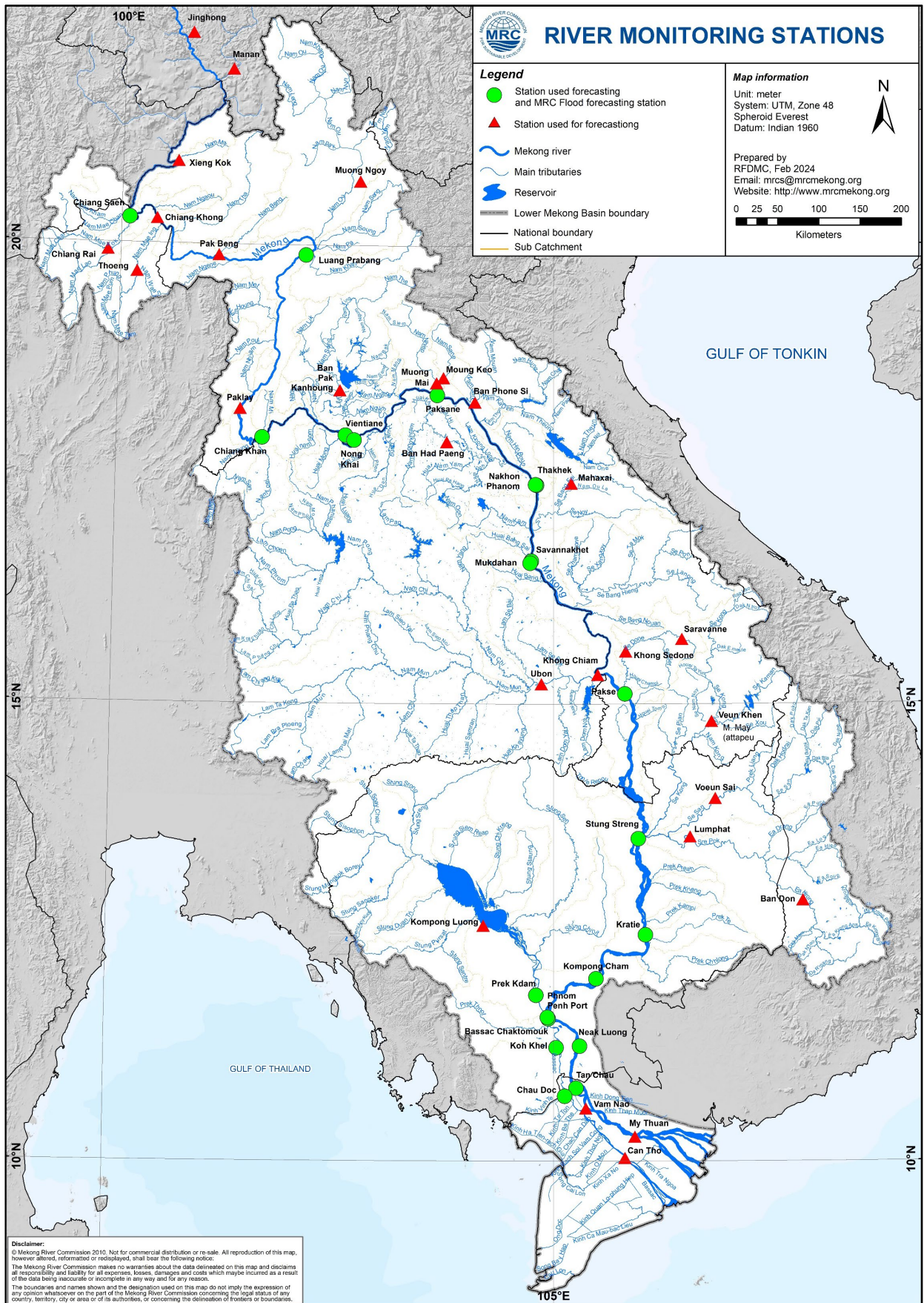
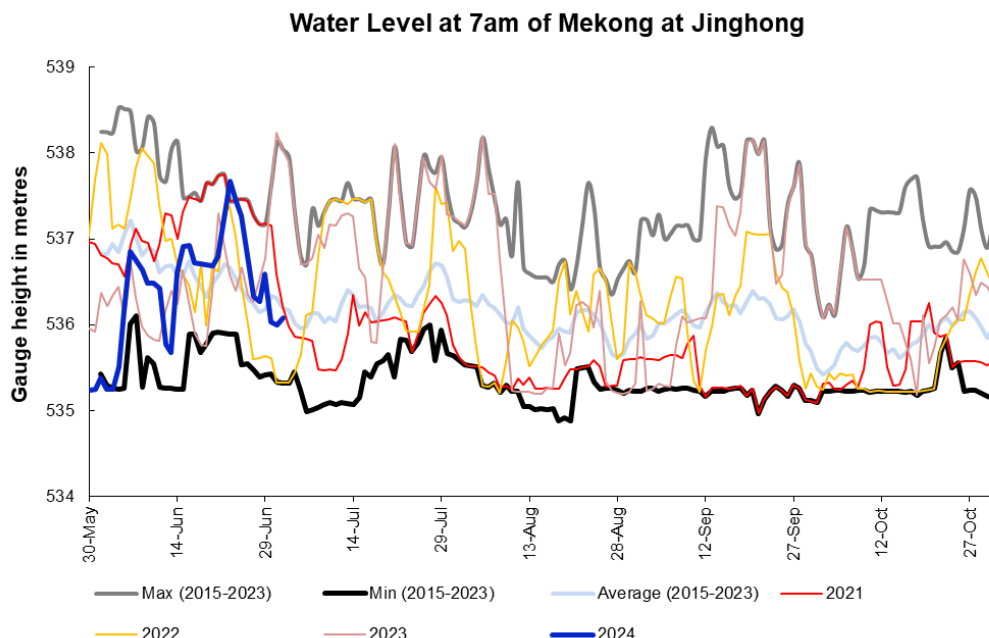


Figure 5: The key stations along LMB for river flood forecasting

The water levels in key monitoring stations on 01 July 2024 are below their long-term averages (LTAs) except for the Luang Prabang station. Moreover, all stations with available PMFM (Article 6C) thresholds are in normal conditions. The graphics of water level monitoring in all key stations are presented in **Annex A** and the weekly water levels and rainfall at each key station are summarised in **Annex B**.



**Figure 6. Water level at the Jinghong hydrological station up to 01 July 2024.**

At the end of the wet season, when water levels along the Mekong River subside, the outflow of the Tonle Sap Lake (TSL) returns to the Mekong River and then to the Delta. This phenomenon normally takes place between September and October. Based on flow observation at Prek Kdam monitoring station, the inflow/reverse of the Tonle Sap Lake took place since 29 June 2024.

The outflow flow is calculated based on a formula of rating-curves using by difference of water levels at Kompong Luong and Phnom Penh Port stations for slop and Prek Kdam as cross-section of the Lake. The formula of flow is as follows:

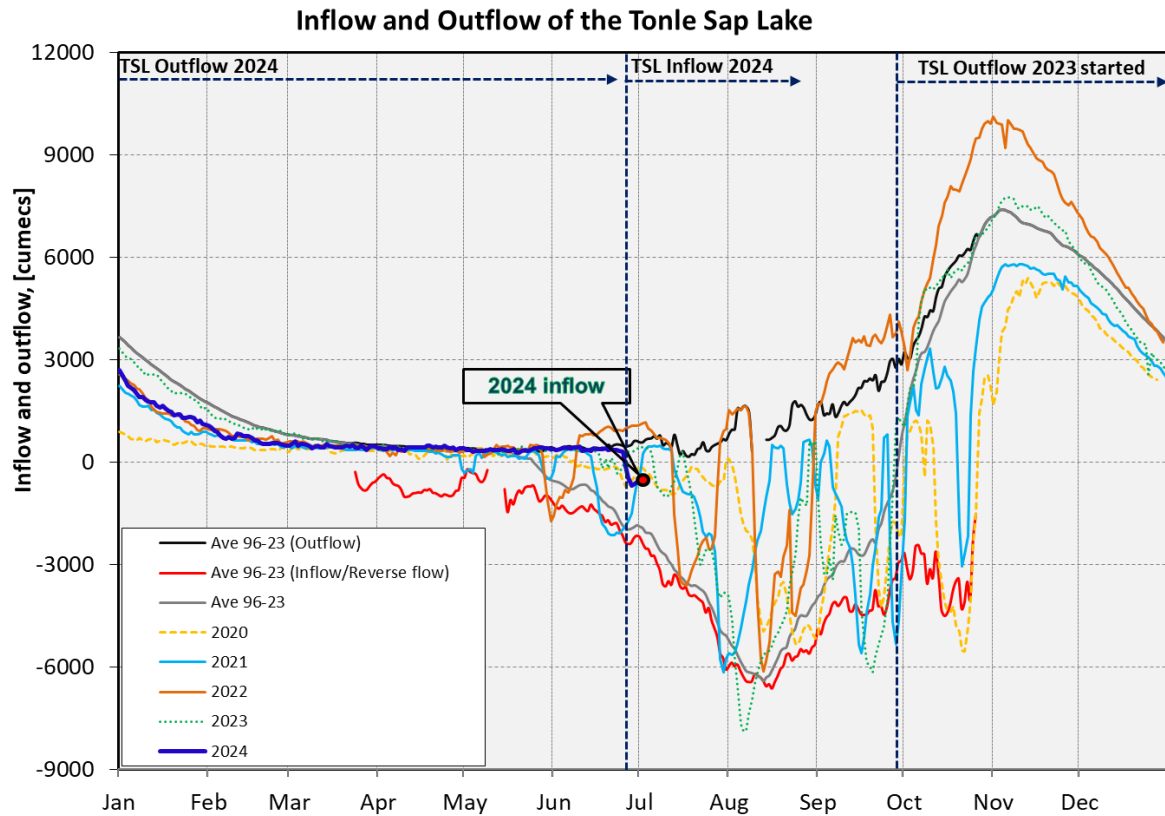
$$Flow = WL_{Prek\ Kdam}^{1.2} \times \sqrt{|WL_{Phnom\ Penh\ Port} - WL_{Kampong\ Luong}|}$$

Where, WL is water level in m (msl).

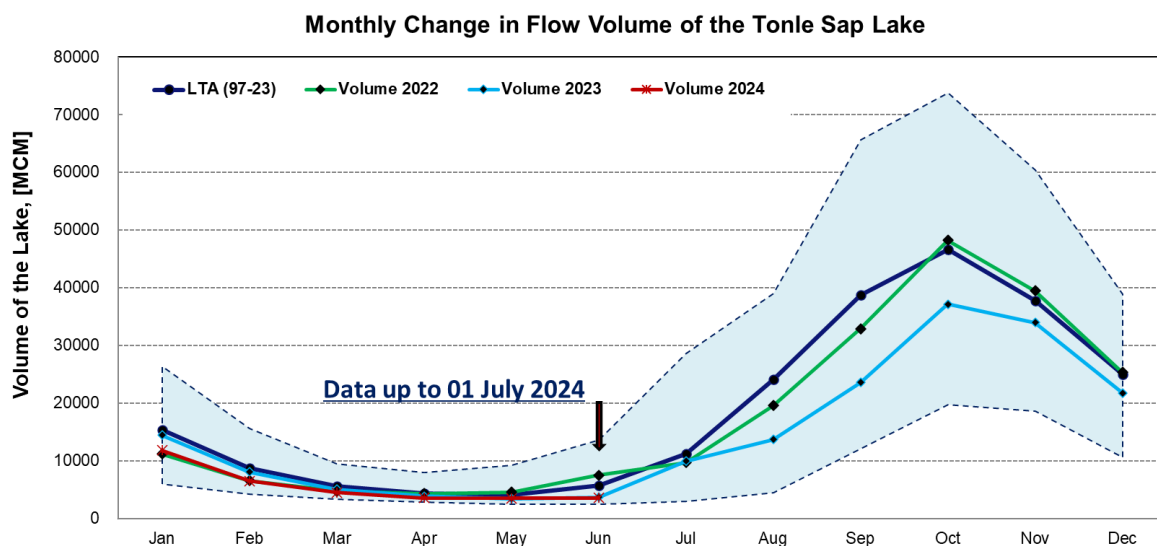
The seasonal changes of the inflow/reverse flow and the outflow of the TSL at Prek Kdam in comparison with the flows of 2020, 2021 and 2022, 2023 and their LTA level (1997-2023) are illustrated in **Figure 8**. Up to 01 July 2024, it was observed that the main outflow to Tonle Sap Lake decreased due to limited rainfall and less inflows from upstream (**Figure 8**). This decreased outflow of Tonle Sap Lake was most likely caused by low inflows from its tributaries.



The seasonal changes in monthly flow volumes up to 01 July 2024 for the TSL compared with that in 2020, 2021, 2022, 2023 and their LTAs, and the fluctuation levels (1997–2023) are presented in **Table 8**. The mean monthly water volume of the Tonle Sap Lake in June 2024 is lower than its LTA (about 62.92 %), 2023 and 2022 but higher than that in 2019, and 2020 during the same period (**Figure 8 and Table 1**).



**Figure 7: Seasonal change of inflows and outflows of Tonle Sap Lake.**



**Figure 8. The seasonal change in monthly flow volume of Tonle Sap Lake.**

**Table 1. The monthly change in the flow volume of Tonle Sap Lake.**

Month	LTA (97-22) [MCM]	Max Volume [MCM]	Min Volume [MCM]	Volume 2019 [MCM]	Volume 2020 [MCM]	Volume 2021 [MCM]	Volume 2022 [MCM]	Volume 2023 [MCM]	Volume 2024 [MCM]	Volume in 2024 [%], compared with its LTA
Jan	15322.86	26357.53	5906.80	10285.31	5906.80	9923.80	11214.32	14422.11	11824.86	77.17
Feb	8723.39	15596.22	4198.60	6019.30	4264.19	5832.97	6558.79	8069.29	6505.88	74.58
Mar	5602.68	9438.24	3347.07	4354.62	3553.99	4264.88	4736.52	5080.64	4488.23	80.11
Apr	4327.36	8009.14	2866.91	3667.47	2992.61	3556.68	4288.31	3884.16	3569.01	82.48
May	4027.82	9176.93	2417.81	3266.43	2594.92	3240.78	4556.83	3438.66	3517.79	87.34
Jun	5699.50	13635.01	2468.70	3517.06	2641.88	3798.29	7489.04	3689.97	3586.07	62.92
Jul	11188.79	28599.56	2925.86	4001.99	2925.86	5346.73	9703.79	9953.41		
Aug	24070.98	39015.12	4433.46	7622.71	5941.07	10547.80	19554.70	13694.57		
Sep	38787.47	65632.35	12105.31	24194.19	12105.31	16382.34	32860.34	23550.60		
Oct	46562.09	73757.23	19705.50	30358.38	20799.13	27318.21	48199.12	37141.40		
Nov	37739.30	60367.33	18534.61	19112.65	27546.80	28982.93	39452.53	33929.52		
Dec	25009.52	38888.95	10563.49	10577.29	18251.65	20170.76	25346.65	21757.70		
	Critical situation: lower than long-term minimum values (LTMIN)									
	Normal condition: within the range of long-term min (LTMIN) and max (LTMAX) values									
	Low volume situation: lower than long-term average (LTA)									
Unit: Million Cubic Meter (1 MCM= 0.001 km <sup>3</sup> )										

**Remarks:** the volume of Tonle Sap Lake in 2024 is updated until 01 July 2024.

## 4. Flash Flood in the Lower Mekong Basin

During the weekly monitoring period from 25 June – 01 July, the LMB received light to heavy rain and thunderstorms in some areas.

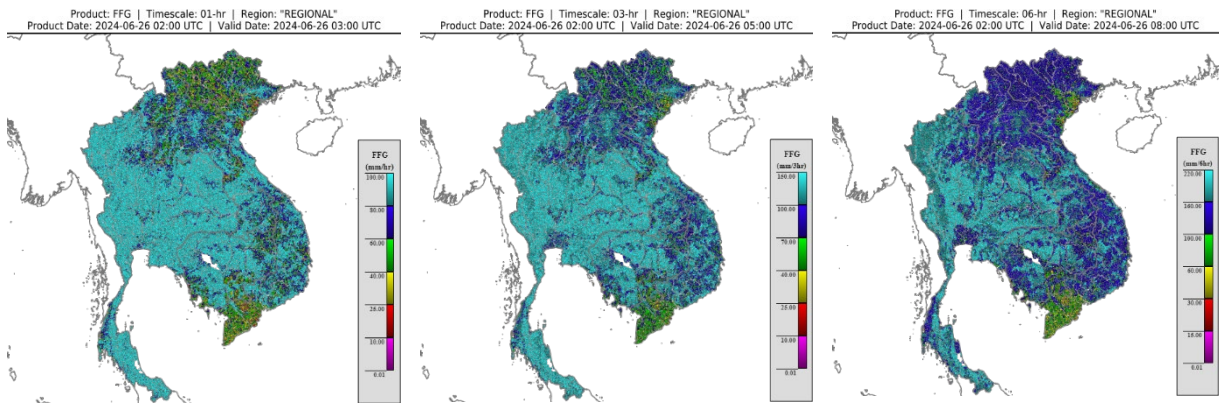
According to the Southeast Asian Flash Flood Guidance System (SEAFFGS) and analysis, flash flood guidance was detected high level in the next 1, 3, and 6 hours in some areas of Lao PDR during this period, the reporting period as shown in [Figure 14](#) and [Table 2](#).

FLASH FLOOD GUIDANCE IN THE LOWER MEKONG BASIN IN LAO PDR – 26 JUNE								
In the next 01 hour			In the next 03 hour			In the next 06 hour		
Province	District	Level of FFG	Province	District	Level of FFG	Province	District	Level of FFG
Attapeu	Sanxay	moderate	Attapeu	Sanxay	moderate	Khammuane	Nakai	moderate
Champasak	Paksong	moderate	Khammuane	Nakai	moderate	Khammuane	Nhommalat	moderate
Huaphanh	Viengthon	moderate	Khammuane	Bualapha	moderate	Khammuane	Mahaxay	high
Khammuane	Nakai	high	Khammuane	Nhommalat	moderate	Khammuane	Xaybouath	high
Khammuane	Bualapha	moderate	Khammuane	Mahaxay	high	Khammuane	Thakhek	high
Khammuane	Nhommalat	high	Khammuane	Xaybouath	high	Khammuane	Nongbok	high
Khammuane	Mahaxay	high	Khammuane	Thakhek	high	Luangprabang	Ngoi	moderate
Khammuane	Xaybouath	moderate	Khammuane	Nongbok	high	Oudomxay	Xay	moderate
Khammuane	Xebangfay	moderate	Luangprabang	Ngoi	moderate	Oudomxay	Nga	moderate
Khammuane	Thakhek	high	Oudomxay	Xay	moderate	Phongsaly	Samphanh	high
Khammuane	Nongbok	high	Oudomxay	Nga	moderate	Savannakhet	Xaybuly	moderate
Khammuane	Thakhek	moderate	Phongsaly	Samphanh	high	Vientiane	Xanakham	high
Luangprabang	Ngoi	moderate	Savannakhet	Xaybuly	moderate			
Luangprabang	Viengkham	moderate	Savannakhet	Atsaphone	moderate			
Oudomxay	Xay	moderate	Vientiane	Xanakham	high			
Oudomxay	La	moderate	Xayaboury	Paklai	moderate			

FLASH FLOOD GUIDANCE IN THE LOWER MEKONG BASIN IN LAO PDR – 26 JUNE								
In the next 01 hour			In the next 03 hour			In the next 06 hour		
Province	District	Level of FFG	Province	District	Level of FFG	Province	District	Level of FFG
Oudomxay	Beng	moderate						
Oudomxay	Nga	moderate						
Phongsaly	Nhot ou	moderate						
Phongsaly	Phongsaly	moderate						
Phongsaly	May	moderate						
Phongsaly	Samphanh	high						
Phongsaly	khoua	moderate						
Savannakhet	Xaybuly	moderate						
Savannakhet	Atsaphone	moderate						
Vientiane	Keo oudom	moderate						
Vientiane	Phonhong	moderate						
Vientiane	Thoulakho	moderate						
Vientiane	Xanakham	high						
Xayaboury	Paklai	moderate						
Xayaboury	Kenethao	moderate						
Xaysomboun	Phoun	moderate						
Xaysomboun	Longxan	moderate						

FLASH FLOOD GUIDANCE IN THE LOWER MEKONG BASIN IN LAO PDR – 29 JUNE								
In the next 01 hour			In the next 03 hour			In the next 06 hour		
Province	District	Level of FFG	Province	District	Level of FFG	Province	District	Level of FFG
Attapeu	Sanxay	moderate	Attapeu	Sanxay	moderate	Attapeu	Sanxay	moderate
Attapeu	Phouvong	moderate	Bolikhamxay	Thaphabat	moderate	Bolikhamxay	Thaphabat	moderate
Bolikhamxay	Thaphabat	moderate	Khammuane	Xaybouath	moderate	Vientiane	Vangvieng	moderate
Khammuane	Mahaxay	moderate	Khammuane	Nongbok	moderate	Vientiane	Keo oudom	high
Khammuane	Xaybouath	moderate	Luangprabang	Ngoi	moderate	Vientiane	Phonhong	high
Khammuane	Nongbok	moderate	Vientiane	Vangvieng	moderate	Xaysomboun	Phoun	moderate
Luangprabang	Ngoi	moderate	Vientiane	Keo oudom	high			
Saravane	Ta oi	moderate	Vientiane	Phonhong	high			
Savannakhet	Xaybuly	moderate	Vientiane	Xanakham	moderate			
Vientiane	Vangvieng	moderate	Vientiane	Thoulakho	moderate			
Vientiane	Met	moderate	Vientiane	Xanakham	moderate			
Vientiane	Feuang	moderate	Xayaboury	Paklai	moderate			
Vientiane	Keo oudom	high	Xaysomboun	Thathom	moderate			
Vientiane	Phonhong	high	Xaysomboun	Phoun	moderate			
Vientiane	Thoulakho	moderate						
Xayaboury	Paklai	moderate						
Xaysomboun	Thathom	moderate						
Xaysomboun	Xaysombou	moderate						
Xaysomboun	Thathom	moderate						
Xaysomboun	Phoun	moderate						
Xaysomboun	Longxan	moderate						
Xaysomboun	Hom	moderate						
Xiengkhuang	Morkmay	moderate						

**Table 2. Detected low-risk flash flood in the LMB on 26 June**



**Figure 9. Flash Flood Guidance for the next 1-hr, 3-hr, and 6-hr on 24 June**

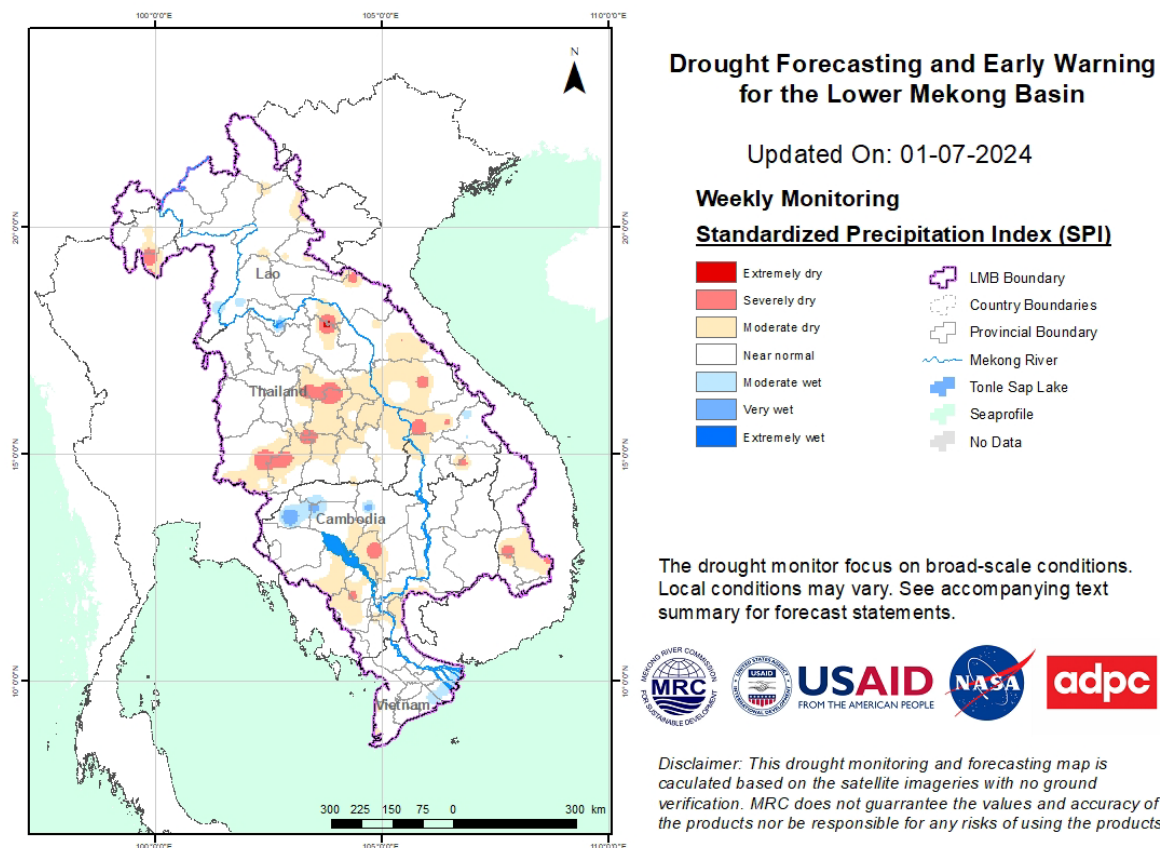
## 5. Drought Monitoring in the Lower Mekong Basin

### 5.2. Weekly drought monitoring from 27 June to 1 July 2024

Drought monitoring data for 2024 are available from Monday to Sunday every week; thus, the reporting period is normally delayed by one day compared to Flood and Flash Flood reports. We adopt the Index of Soil Water Fraction (ISWF) data obtained from FFGS to represent soil moisture of agricultural indicator for both dry and wet seasons.

- **Weekly Standardised Precipitation Index (SPI1)**

As indicated in **Figure 10** below, during June 25–July 1, the LMB was facing some moderate and severe meteorological droughts. Severe drought took place in Kampong Chhang, Kampongthom, Bolikhamxai, Salavan, Savannakhet, Attapu, Chiang Ria, Phayao, Bueng Kan, Sakon Nakhon, Kalasin, Roi Et, Surin, Nakhon Ratchasima, Buri Ram, and Dak Lak.

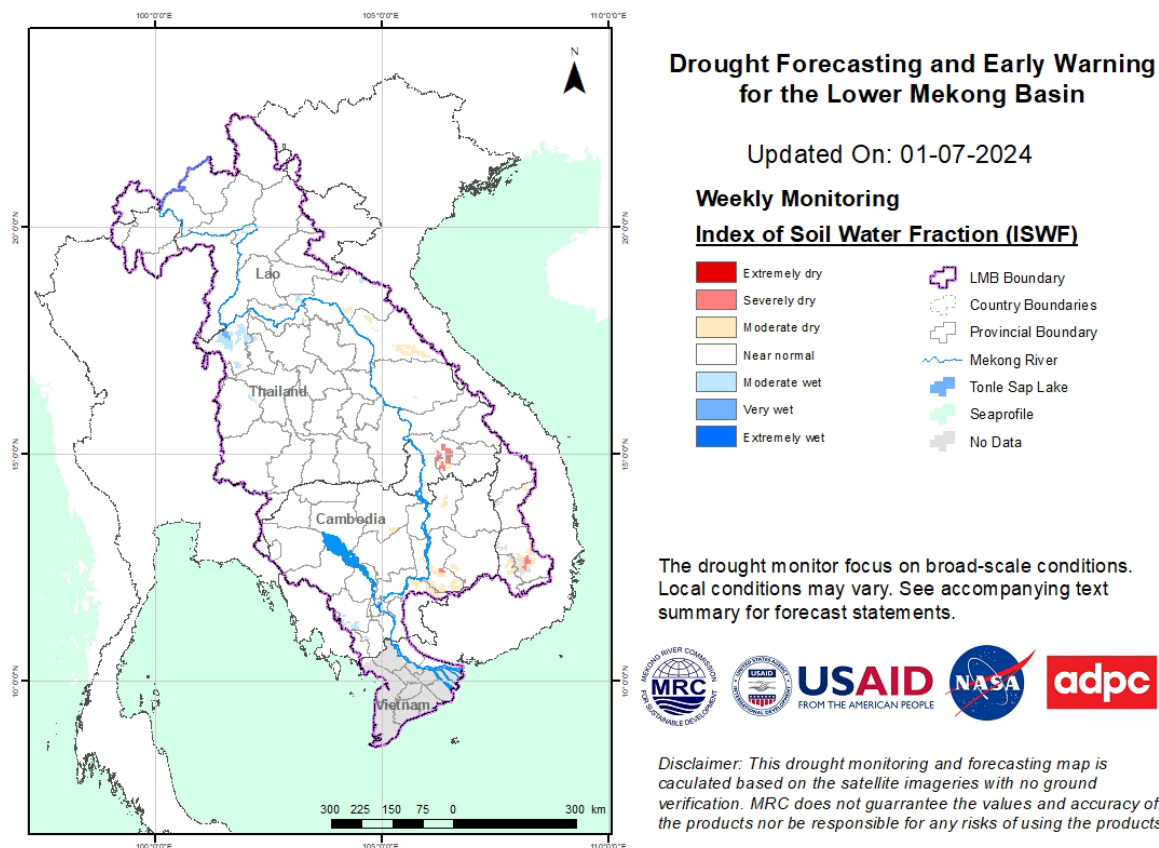


**Figure 10: Weekly standardized precipitation index from June 25 to July 1.**

- **Weekly Index of Soil Water Fraction (ISWF)**

Some moderate and severe agricultural droughts, as displayed in **Figure 10**, were taking place in Krtie, Tbong Khmum, Mondulhiri, Champasak, Khammuan, and Dak Lak. Other areas were normal or wet during the monitoring week from 25 June to 1 July.





**Figure 11: Weekly Index of Soil Water Fraction from June 25 to July 1.**

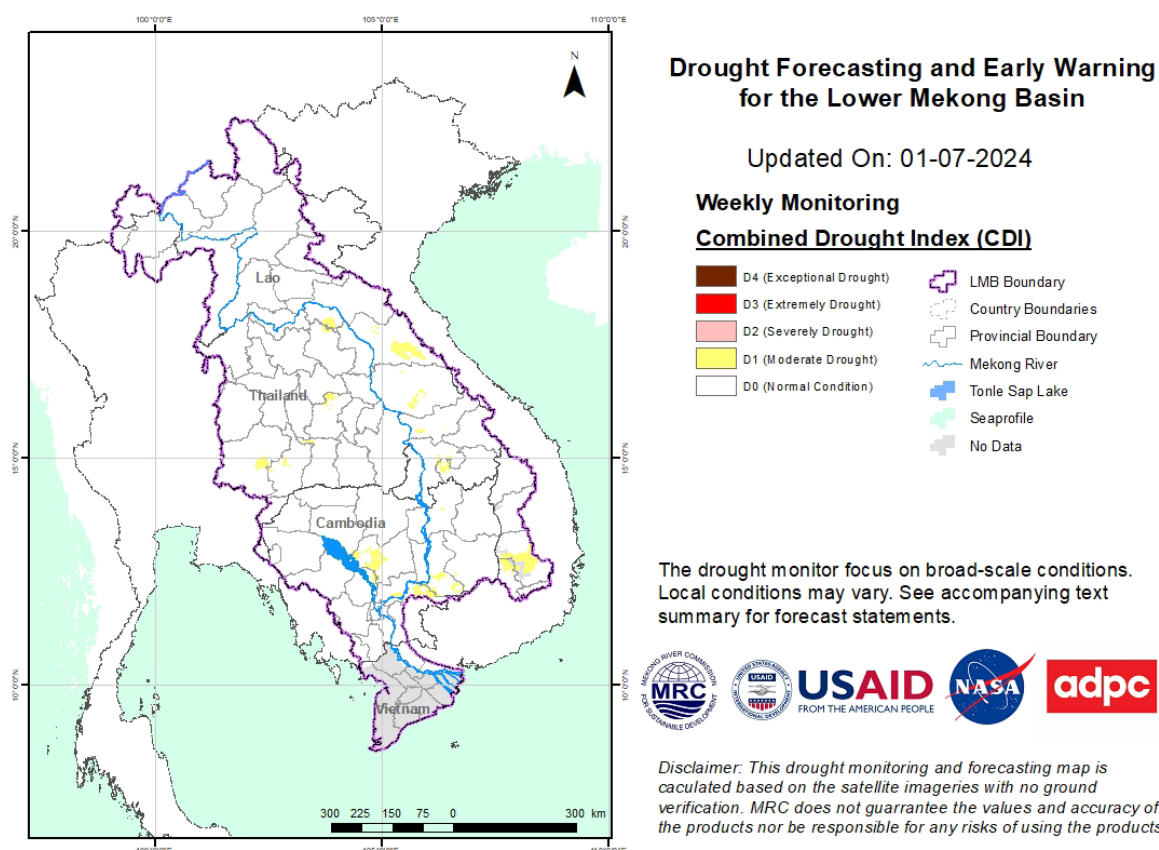
- Weekly Combined Drought Index (CDI)**

The combined drought indicator, **Figure 11**, shows that the LMB was st moderate drought in some areas of the middle and lower parts. Moderate drought specifically covered some areas of Kampong Cham, Kampongthom, Kratie, Mondulkiri, Prey Veng, Khammuan, Savanakheth, Salavan, Champasack, Sakon Nakhon, Kalasin, Mukdahan, Roi Et, Nakhon Ratchasima, and Gia Lai.

The impacted areas are listed below:

Number	Country	Province	Moderate	Severe	Extreme	Exceptional	Number	Country	Province	Moderate	Severe	Extreme	Exceptional	Number	Country	Province	Moderate	Severe	Extreme	Exceptional
1	Cambodia	Battambang					24	Lao PDR	Oudomxai					47	Thailand	Udon Thani				
2	Cambodia	Banteay Meanchey					25	Lao PDR	Loungprabang					48	Thailand	Sakon Nakhon				
3	Cambodia	Kampong Cham					26	Lao PDR	Xayaburi					49	Thailand	Bueng Kan				
4	Cambodia	Pursat					27	Lao PDR	Xiangkhouang					50	Thailand	Nakhon Phanom				
5	Cambodia	Kampong Chhnang					28	Lao PDR	Vientiane					51	Thailand	Kalasin				
6	Cambodia	Otdar Meanchey					29	Lao PDR	Vientiane Capital					52	Thailand	Mukdahan				
7	Cambodia	Preah Vihear					30	Lao PDR	Xaisomboun					53	Thailand	Roi Et				
8	Cambodia	Kampong Thom					31	Lao PDR	Borikhamxai					54	Thailand	Yasothon				
9	Cambodia	Kratie					32	Lao PDR	Khammouan					55	Thailand	Amnat Charoen				
10	Cambodia	Monduliri					33	Lao PDR	Savanakhet					56	Thailand	Ubon Ratchathani				
11	Cambodia	Ratanakiri					34	Lao PDR	Salavan					57	Thailand	Si Sa Ket				
12	Cambodia	Tbong Khmum					35	Lao PDR	Xekong					58	Thailand	Surin				
13	Cambodia	Prey Veng					36	Lao PDR	Attapu					59	Thailand	Buri Ram				
14	Cambodia	Kampot					37	Lao PDR	Champasack					60	Thailand	Nakhon Ratchasima				
15	Cambodia	Takeo					38	Thailand	Chiang Mai					61	Viet Nam	Kon Tum				
16	Cambodia	Sval Rieng					39	Thailand	Chiang Rai					62	Viet Nam	Gia Lai			\$	
17	Cambodia	Stung Treng					40	Thailand	Payao					63	Viet Nam	Dak Nong				
18	Cambodia	Kampong Speu					41	Thailand	Loei					64	Viet Nam	Dak Lak				
19	Cambodia	Kandal					42	Thailand	Nong Bua Lam Phu					65	Viet Nam	Dong Thap				
20	Cambodia	Siem Reap					43	Thailand	Khon Kaen					66	Viet Nam	Tien Giang				
21	Lao PDR	Bokeo					44	Thailand	Nong Khai					67	Viet Nam	An Giang				
22	Lao PDR	Luangnamtha					45	Thailand	Chaiyaphum					Other provinces of the Mekong Delta of Viet Nam have no data						
23	Lao PDR	Phongsali					46	Thailand	Maha Sarakham											

**Note:** S: short-term drought, less than 1 months; L: long-term drought, more than 1 month



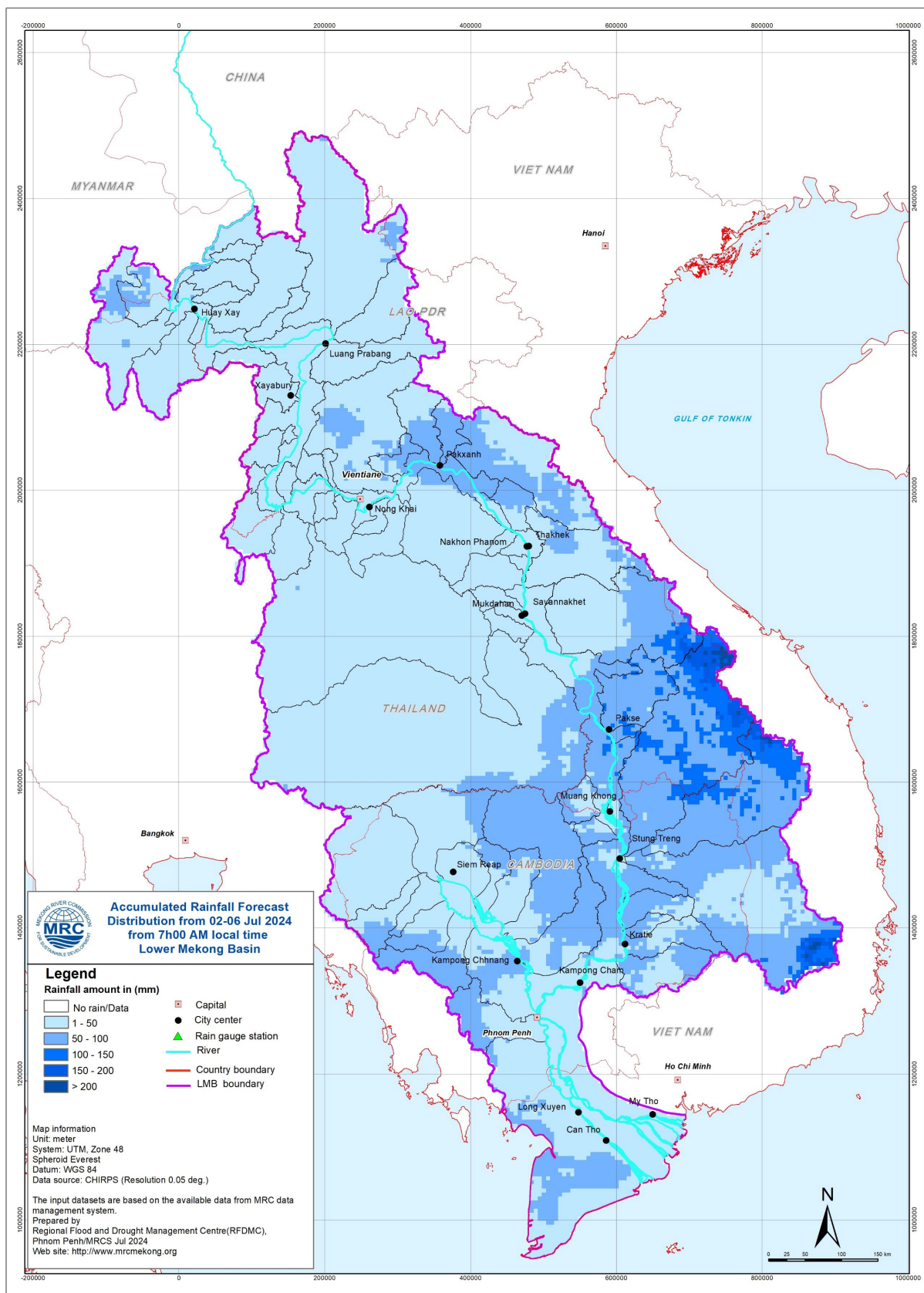
**Figure 12: Weekly Combined Drought Index from June June 25 to July 1.**

More information on Drought Forecasting and Early Warning (DFEW) as well as the explanation is available here: <http://droughtforecast.mrcmekong.org/templates/view/our-product>. DFEW provides not only weekly monitoring and forecasting information but also a three-month forecast of drought indicators with seasonal outlook which are updated every month based on international weather forecast models. Details on drought forecast are described in section 6.4 of this report.

## 6 Weather and Water Level Forecast and Flash Flood information

### 6.1 Rainfall forecast

From 02 to 06 July 2024, the accumulated rainfall over the entire Lower Mekong Basin is distributed with light to heavy rain based on CHIRPS-GFS (**Figure 12**). Moderate rainfall is expected in the central part of Laos, the southwestern and northeastern parts of Cambodia, and the 3S Basin of Sekong, Sesan, and Srepok. However, heavy rainfall may likely occur in the upper part of the 3S Basin during 03–05 July.



**Figure 13: Accumulated rainfall forecast from CHIRP-GFS (02 – 06 July 2024)**

## 6.2 Water level forecast

In Chiang Saen monitoring station, the water level is expected to be fluctuated over the forecasting period of 02 – 06 July 2024. However, it will slightly decrease from 3.36 m to 3.41 m. The water levels in Luang Prabang affected by backwater and Chiang Khan stations are likely decreasing approximately -0.22 m. However, water level at Chiang Khan station is considered stable.

Along the Mekong mainstream, the water levels at all other upper stations from Vientiane to Thakhek are expected to slightly decrease. At Vientiane, Nongkhai, Paksane, Nkahon Phanom, and Thakhek, water levels are expected to decrease approximately -0.66 m, -0.65 m, -0.19, -0.24 and -0.27 m, respectively. However, at Mukdahan, Savannakhet, and Kong Chiam, are likely in a stable range with either only slight increase or decrease. At stations located from Paksae to Phnom Penh Port, water levels are likely increasing. At Pakse, Stung Treng, Kratie, Kompong Cham, Phnom Penh (Bassac), Phnom Penh Port, and Prek Kdam, water level is likely rise with approximated value of 0.15 m, 0.39 m, 0.61 m, 0.61 m, 0.29 m, 0.30 m, and 0.25 m respectively. However, water levels at Koh Khel and Neak Luong are expected to be slightly decrease of approximately -0.24 m and -0.05 m, respectively as compared to the previous week.

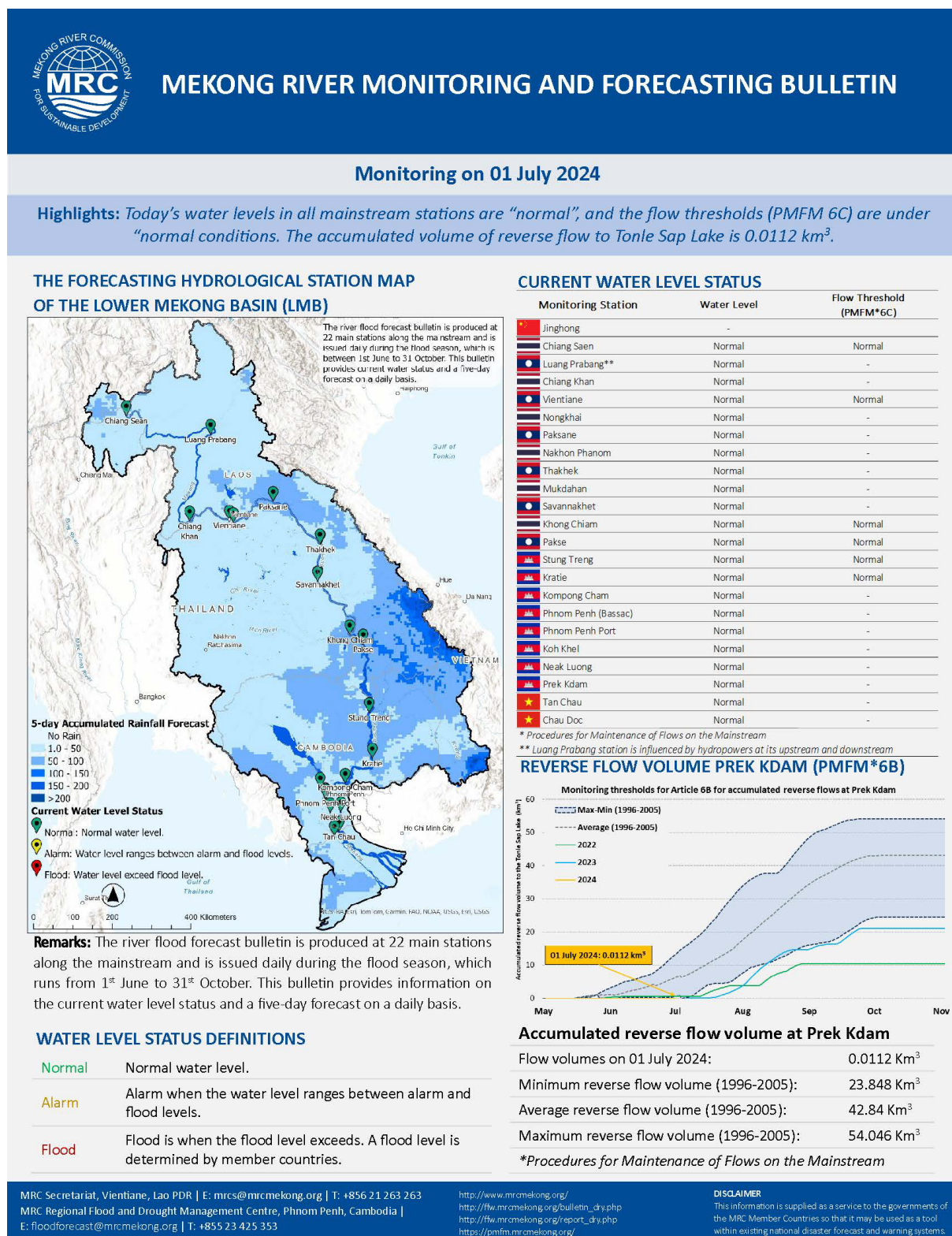
For the Tan Chau station on the Mekong River and Chau Doc station on the Bassac River, water levels will be fluctuating approximately ranging from 0.86 to 0.55 m and 0.66 to 0.62 m, respectively, following daily tidal effects from the sea.

The water levels at key stations are forecasted to be below their LTAs except for Luang Prabang station from 02 to 06 July 2024.

The weekly River Monitoring Bulletin and forecasting issued on 01 July 2024 can be found in **Table 2**. Results of the weekly river monitoring and forecasting bulletin are also available at <http://ffw.mrcmekong.org/bulletin.php>






















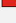
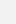


**Table 3. River Monitoring and Forecasting Bulletin.**



## Forecasting from 02 to 06 July 2024

**Highlights:** In the next five days, it is forecasted that water levels at all the mainstream stations will not reach the “alarm” levels.

Forecasting Station	24 h Observed Rainfall (mm)	Zero gauge above M.S.L (m)	Observed Water Level against zero gauge (m)		Forecasted Water Level (m)					Alarm Level (m)	Flood Level (m)	Forecasted Water Levels Change in 5 days (m)	Max. Water levels change within next 5 days (m)	Min. distance to alarm level within next 5 days (m)	Min. distance to flood level within next 5 days (m)
	30-Jun		30-Jun	01-Jul	02-Jul	03-Jul	04-Jul	05-Jul	06-Jul						
 Jinghong	6.0	-	536.03	↓ 536.00	-	-	-	-	-	-	-	-	-	-	-
 Chiang Saen	3.1	357.110	3.40	↓ 3.36	↓ 3.22	↑ 3.12	→ 3.05	↑ 3.31	↑ 3.41	11.50	12.80	→ 0.05	-0.31	8.09	9.39
 Luang Prabang	11.6	267.195	10.34	↓ 10.08	↓ 9.96	↓ 9.85	↓ 9.72	→ 9.80	→ 9.86	17.50	18.00	↓ -0.22	-0.36	7.54	8.04
 Chiang Khan	0.0	194.118	7.91	↓ 7.88	↓ 7.74	↓ 7.43	→ 7.33	↑ 7.47	↑ 7.79	14.50	16.00	→ -0.09	-0.55	6.71	8.21
 Vientiane	0.0	158.040	5.10	→ 5.16	→ 5.07	↓ 4.89	↓ 4.71	↓ 4.47	→ 4.50	11.50	12.50	↓ -0.66	-0.69	6.43	7.43
 Nongkhai	0.0	153.648	4.92	→ 5.02	→ 4.95	↓ 4.77	↓ 4.55	↓ 4.33	→ 4.37	11.40	12.20	↓ -0.65	-0.69	6.45	7.25
 Paksane	6.0	142.125	6.76	↑ 6.89	↑ 7.03	↑ 7.20	↓ 7.02	↓ 6.76	→ 6.70	13.50	14.50	↓ -0.19	0.31	6.30	7.30
 Nakhon Phanom	36.9	130.961	4.80	↑ 5.42	↑ 5.53	↑ 5.65	↓ 5.45	↓ 5.22	→ 5.18	11.50	12.00	↓ -0.24	0.23	5.85	6.35
 Thakhek	35.4	129.629	5.97	↑ 6.57	↑ 6.68	↑ 6.80	↓ 6.61	↓ 6.38	→ 6.30	13.00	14.00	↓ -0.27	0.23	6.20	7.20
 Mukdahan	2.4	124.219	4.80	↑ 4.98	↑ 5.12	↑ 5.23	↓ 5.10	→ 5.02	↓ 4.91	12.00	12.50	→ -0.07	0.25	6.77	7.27
 Savannakhet	0.0	124.219	3.32	→ 3.37	↑ 3.49	↑ 3.60	↓ 3.48	→ 3.40	↓ 3.28	12.00	13.00	→ -0.09	0.23	8.40	9.40
 Khong Chiam	3.1	89.030	5.17	→ 5.20	→ 5.28	→ 5.20	→ 5.12	→ 5.12	↑ 5.23	13.50	14.50	→ 0.03	0.08	8.22	9.22
 Pakse	14.4	86.490	3.74	↑ 3.82	↑ 3.94	↑ 4.06	↑ 4.13	↓ 4.01	→ 3.97	11.00	12.00	↑ 0.15	0.31	6.87	7.87
 Stung Treng	0.0	36.790	4.29	↑ 4.40	↑ 4.49	→ 4.53	→ 4.57	↑ 4.64	↑ 4.79	10.70	12.00	↑ 0.39	0.39	5.91	7.21
 Kratie	0.0	-0.101	10.30	↑ 10.55	↑ 10.70	↑ 10.85	↑ 10.94	↑ 11.03	↑ 11.16	22.00	23.00	↑ 0.61	0.61	10.84	11.84
 Kompong Cham	0.0	-0.930	4.76	↑ 4.84	↑ 5.02	↑ 5.16	↑ 5.27	↑ 5.35	↑ 5.45	15.20	16.20	↑ 0.61	0.61	9.75	10.75
 Phnom Penh (Bassac)	0.0	-1.020	2.75	↓ 2.68	↑ 2.75	↑ 2.81	↑ 2.87	↑ 2.92	↑ 2.97	10.50	12.00	↑ 0.29	0.29	7.53	9.03
 Phnom Penh Port	nr	0.070	1.56	↓ 1.55	↑ 1.63	↑ 1.69	↑ 1.75	↑ 1.80	↑ 1.85	9.50	11.00	↑ 0.30	0.30	7.65	9.15
 Koh Khel	0.0	-1.000	2.99	↑ 3.10	→ 3.12	↓ 3.01	→ 2.98	↓ 2.86	→ 2.85	7.90	8.40	↓ -0.25	0.02	4.78	5.28
 Neak Luong	0.0	-0.330	2.00	↑ 2.15	→ 2.17	↓ 2.06	↓ 2.01	↑ 2.06	↑ 2.10	7.50	8.00	↓ -0.05	0.02	5.33	5.83
 Prek Kdam	34.3	0.080	1.82	↓ 1.78	↑ 1.82	↑ 1.87	↑ 1.93	↑ 1.98	↑ 2.03	9.50	10.00	↑ 0.25	0.25	7.47	7.97
 Tan Chau	2.4	0.000	0.40	↑ 0.86	↑ 1.05	↑ 1.10	↓ 1.05	↓ 0.85	↓ 0.55	3.50	4.50	↓ -0.31	0.19	2.40	3.40
 Chau Doc	2.0	0.000	0.47	↑ 0.66	↑ 1.02	↑ 1.12	↓ 1.08	↓ 0.95	↓ 0.62	3.00	4.00	↓ -0.04	0.42	1.88	2.88

### WATER LEVEL FORECASTING DEFINITIONS

↑	Rising water level.
→	Stable water level: stable water level is defined as a daily change of less than 10cm from Chaing Saen to Savannakhet; less than 5cm at Pakse and Stung Treng; and no more than 3cm from Kratie downstream.
↓	Falling water level.
X	No data available.
Alarm stage	Alarm stage is when the water level ranges between alarm and flood levels.
Flood stage	Flood stage is when the flood level exceeds. A flood level is determined by member countries.

### NOTES

- For **02-06 July**, moderate rainfall is expected to occur in subbasins of Tonle Sap Lake, and the 3S basins, while during **05-06 July**, it is also expected to occur in central part of Laos. However, heavy rainfall may likely occur in the upper parts of the 3S basins during **02-06 July**.
- Water levels at all stations are in normal conditions, which do not reach alarm and flood levels on **01 July**. However, the **accumulated volume** of the reverse flow to Tonle Sap Lake remains **0.0112 Km³**.
- For **02-06 July**, water levels at upper parts of the LMB from Chiang Saen to Khong Chiam stations are likely decreasing. However, water levels from Pakse station downward are expected to increase except for Neak Luong and Koh Khel stations. Water levels at Tan Chau and Chau Doc are forecasted to fluctuate due to tidal influence.
- Water levels at all stations are expected to be below their long-term averages (LTAs) except for Luang Prabang station for the **next 5 days**.



## 6.3 Flash Flood Information

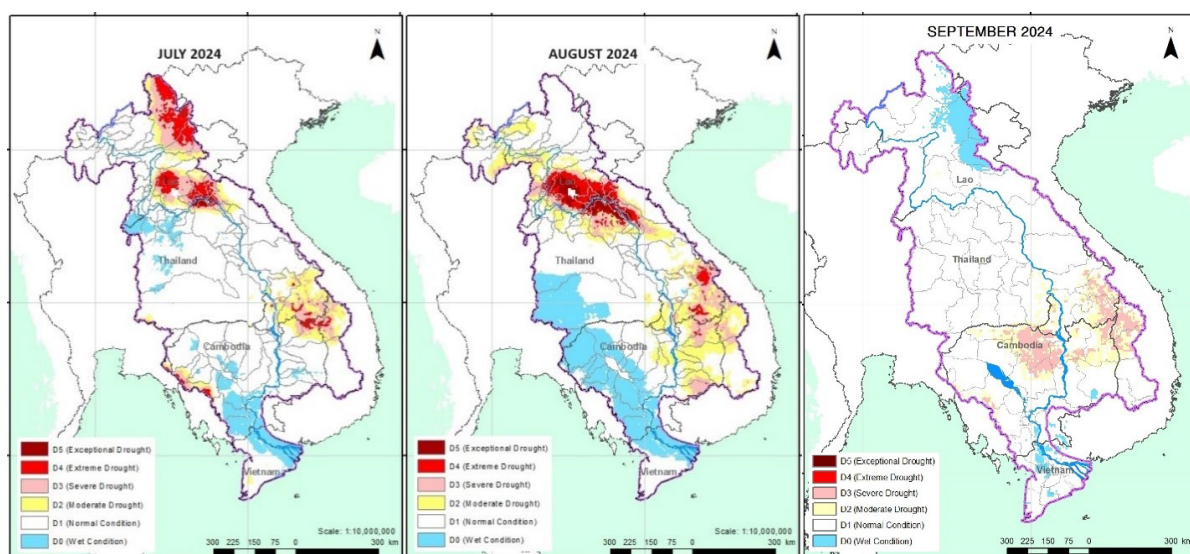
With the predicted of rainfall for the coming week, flash floods might be detected in some areas in the LMB. And local heavy rain in a short period of time is possible with unpredictable short flash floods.

Further detailed information on Flash Flood Guidance Information, as well as on its explanation, is available for download [here](#).

## 6.4 Drought forecast

There are several climate-prediction models with different scenarios in the upcoming months. The MRC's DFEWS adopts the global scale of North America Multi-Model Ensemble (NMME) with downscaled 5km combined drought indicator.

**Figure 13** below shows the monthly drought forecast for July, August and September 2024 over the LMB area.



**Figure 14. Monthly drought forecast for July, August, and September 2024.**

From July to September 2024, it is expected to bring drought conditions to certain areas of the LMB (**Figure 13**). In July, eastern Cambodia, 3S area, and northern Lao PDR are the most severe areas. In August, severe and exceptional droughts are forecasted for the upper part of the LMB. Other areas are likely normal or wet. In September, moderate to severe drought is forecasted for the northern Cambodia and 3S area, while other areas are likely normal or wet. Severe drought is likely taking place in some areas of Otdar Meanchey, Preah Vihear, Stung Treng, Ratanakiri, and Kampong Thom of Cambodia, Xekong and Attapu of Lao PDR and Kon Tum and Gia Lai of Viet Nam.

## **7 Summary and Possible Implications**

### **7.1. Rainfall and its forecast**

In the period of 25 June - 01 July 2024, there has been light to heavy rainfall has been observed over the LMB. Especially, during 29 June – 01 July, heavy and very heavy rainfall has been observed over the LMB in Chiang Khan, Muong Mai, Ban Phone Si, Muong Kao, and Prek Kdam.

During 02 – 08 July 2024, the accumulated rainfall over the entire Lower Mekong Basin is distributed with light to heavy rain. Moderate rainfall is expected in the central part of Laos, the southwestern and northeastern parts of Cambodia, and the 3S Basin of Sekong, Sesan, and Srepok. However, heavy rainfall may likely occur in the upper part of the 3S Basin during 03–05 July.

### **7.2. Water level and its forecast**

At 22 key monitoring stations along the Mekong mainstream from 25 June – 01 July 2024, water levels are normal, and the flow threshold (PMFM 6C) are under normal conditions. It is also the same condition for Tan Chau and Chau Doc monitoring stations, which are significantly influenced by sea tidal fluctuation.

In the period of 02 – 06 July 2024, Water levels are forecasted to be slightly decreasing and stable at upper stretches of LMB from Chiang Saen to Khong Chiam stations. However, water level at other remaining stations from Pakse to Prek Kdam will rise except for Koh Khel and Neak Luong. At Tan Chau and Chau Doc stations, the water levels are predicted to be also fluctuated, resulting from the influence of sea tidal patterns. Water levels at most of the stations are expected to be below their long-term averages (LTAs) except for Luang Prabang station.

### **7.3. Flash flood and its trends**

With the predicted of rainfall for the coming week as mentioned earlier in part 2, the flash flood guidance at a low to high level will likely be detected in some areas of the LMB.

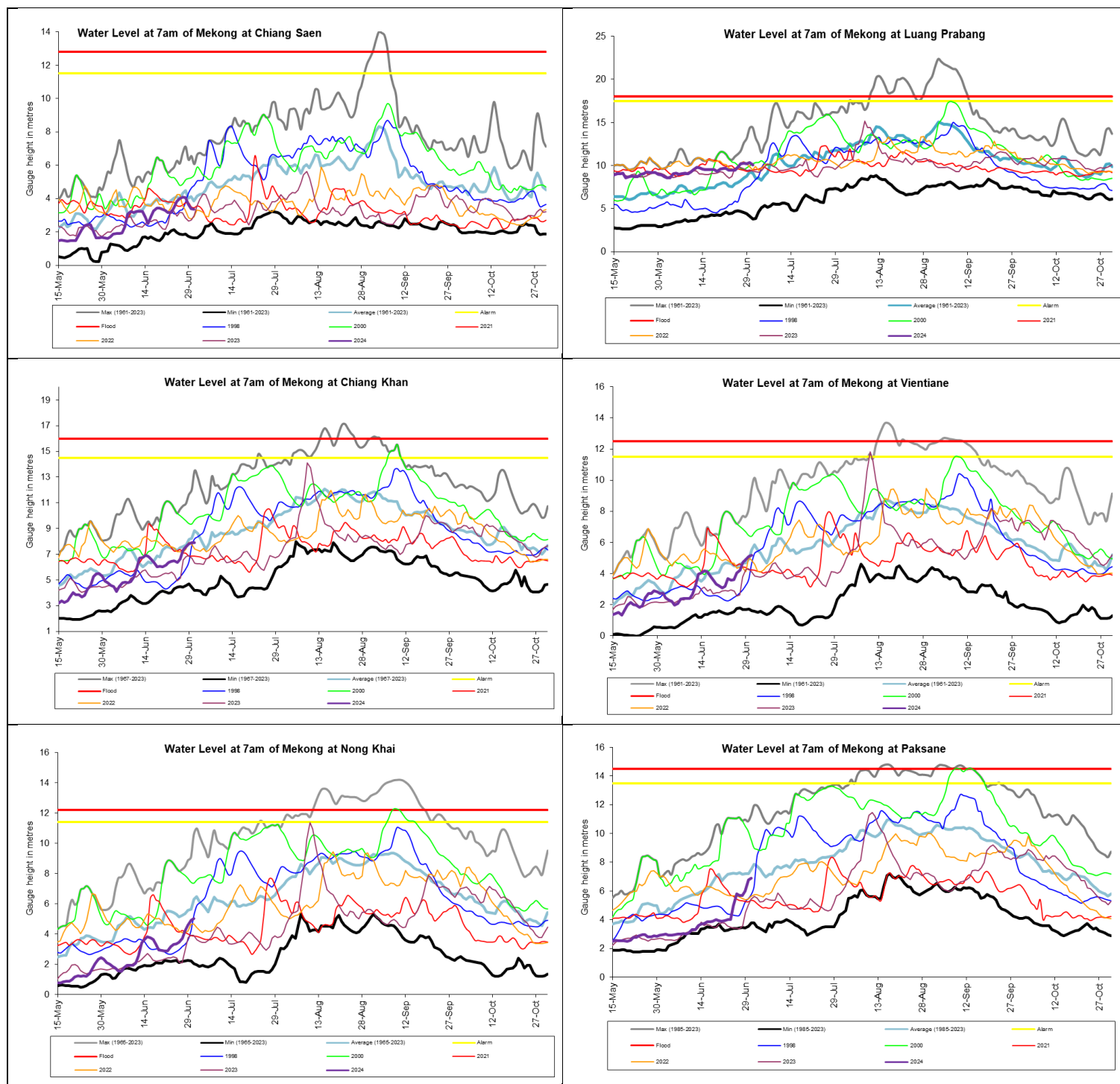
### **7.4. Drought condition and its forecast**

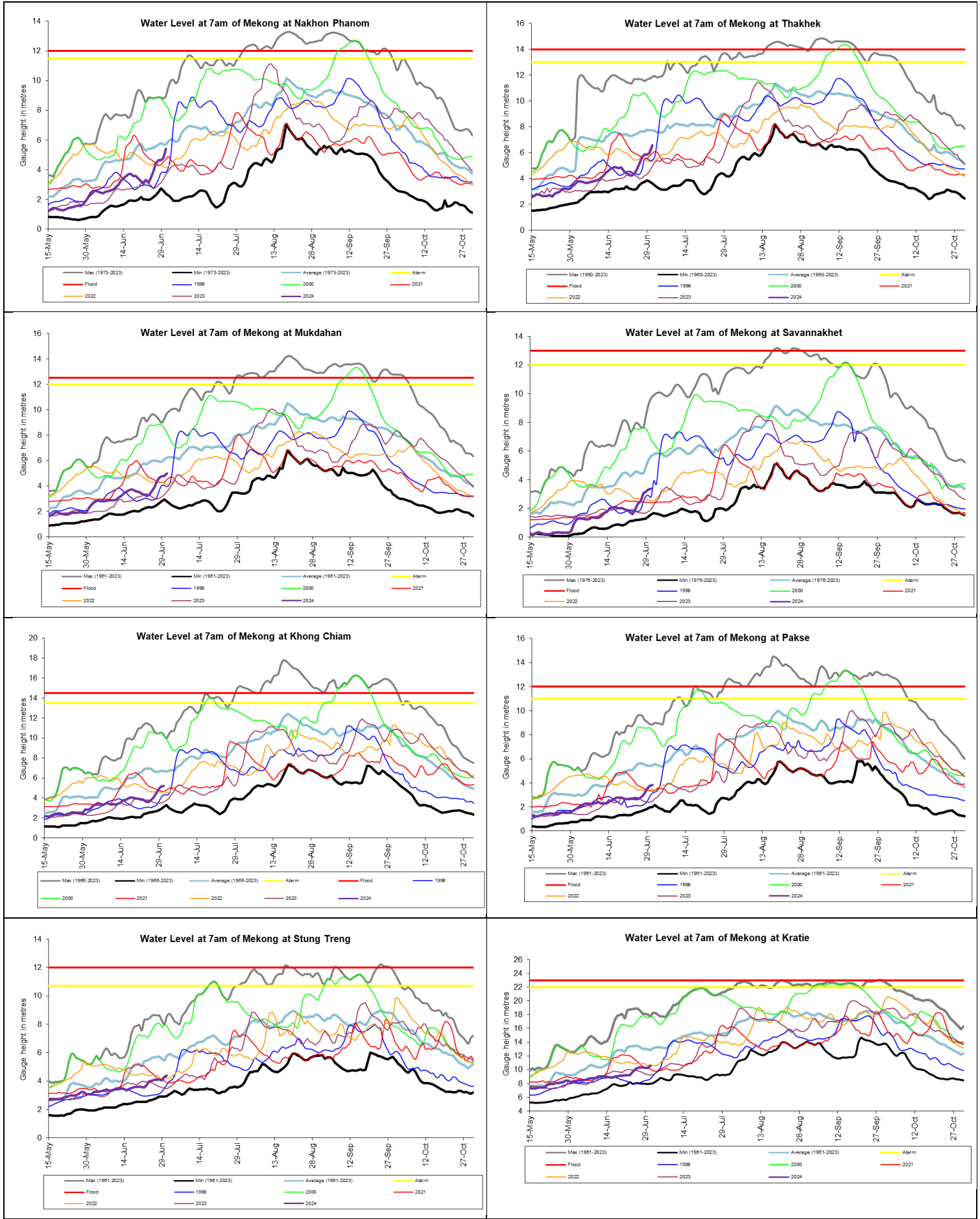
During 25 June-1 July 2024, the LMB was at moderate drought in some areas of the middle and lower parts. Moderate drought specifically covered some areas of Kampong Cham, Kampongthom, Kratie, Mondulkiri, Prey Veng, Khammuan, Savanakheth, Salavan, Champasack, Sakon Nakhon, Kalasin, Mukdahan, Roi Et, Nakhon Ratchasima, and Gia Lai.

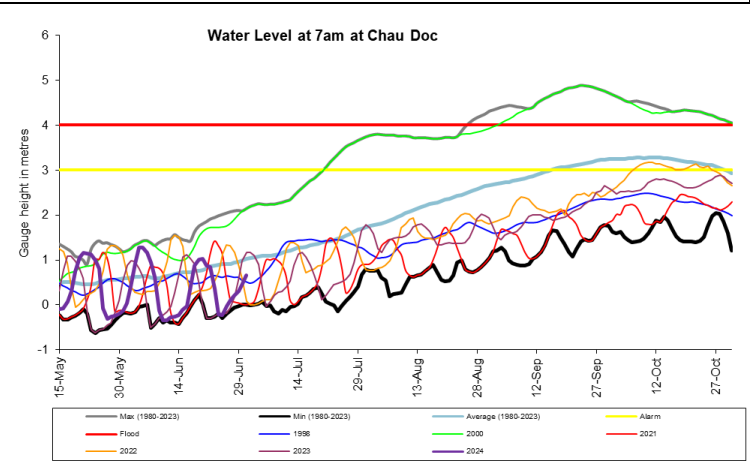
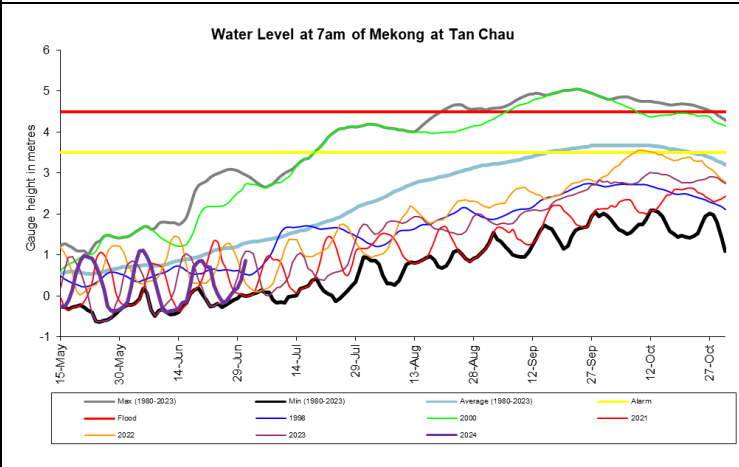
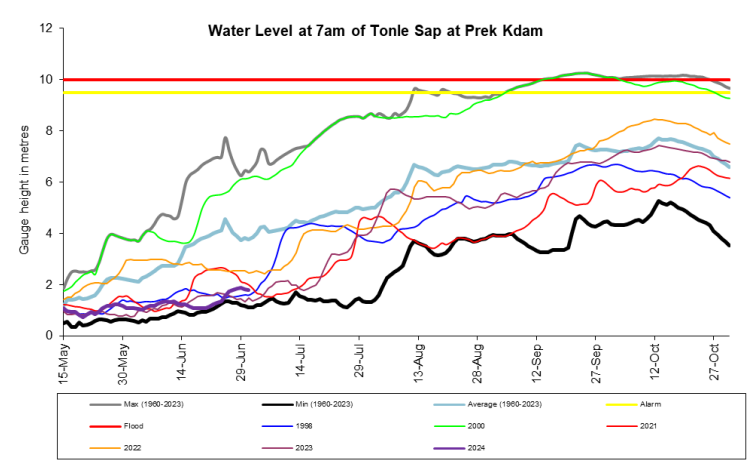
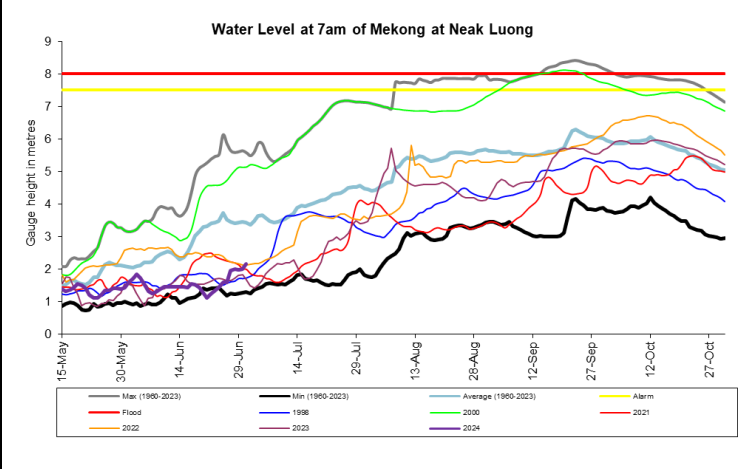
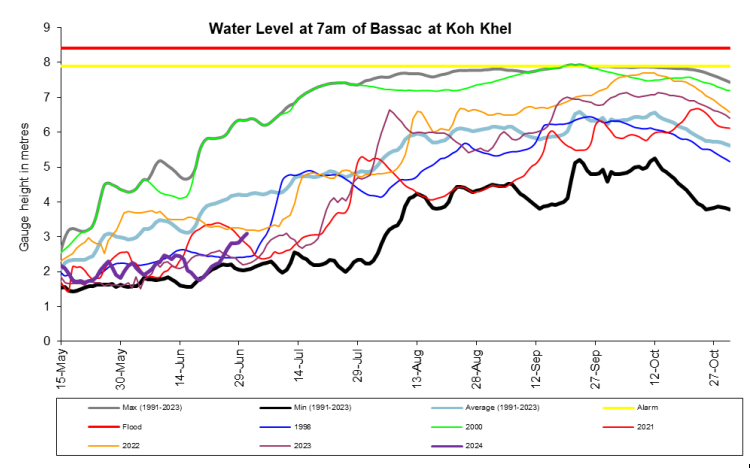
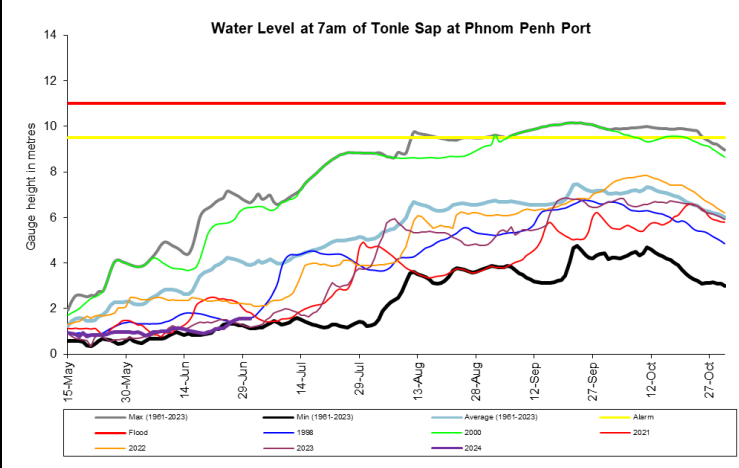
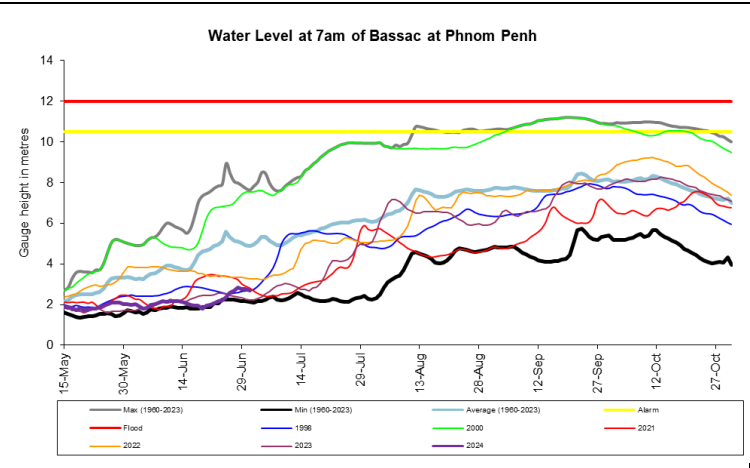
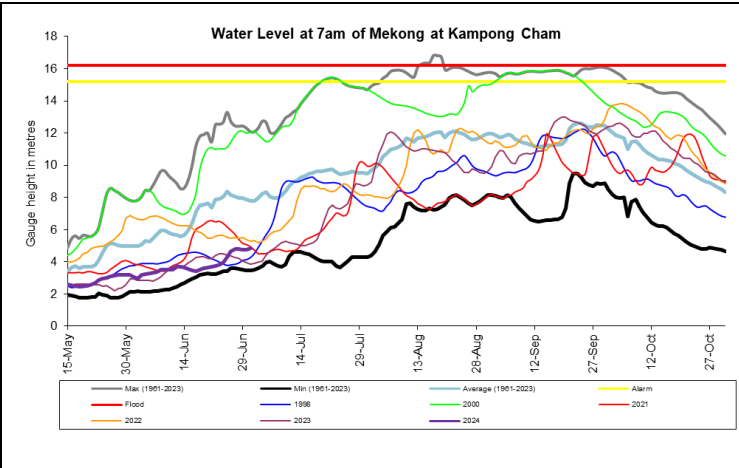


From July to September 2024, it is expected to bring drought conditions to certain areas of the LMB. In July, eastern Cambodia, 3S area, and northern Lao PDR are the most severe areas. In August, severe and exceptional droughts are forecasted for the upper part of the LMB. Other areas are likely normal or wet. In September, moderate to severe drought is forecasted for the northern Cambodia and 3S area, while other areas are likely normal or wet. Severe drought is likely taking place in some areas of Otdar Meanchey, Preah Vihear, Stung Treng, Ratanakiri, and Kampong Thom of Cambodia, Xekong and Attapu of Lao PDR and Kon Tum and Gia Lai of Viet Nam.

## Annex A: Weekly water level monitoring at the 22 key stations







## Annex B: Tables for weekly updated water levels and rainfall at the Key Stations

Table A1: Weekly observed water levels

2024	Jinghong	Chiang Saen	Luang Prabang	Chiang Khan	Vientiane	Nongkhai	Paksane	Nakhon Phanom	Thakhek	Mukdahan	Savannakhet	Khong Chiam	Pakse	Stung Treng	Kratie	Kompong Cham	Phnom Penh (Bassac)	Phnom Penh Port	Koh Khel	Neak Luong	Prek Kdam	Tan Chau	Chau Doc
25-06-2024	537.27	3.83	9.44	6.37	3.59	3.37	4.98	3.47	4.67	3.56	2.00	3.58	2.65	4.01	10.05	4.28	2.35	1.25	2.42	1.58	1.54	-0.13	-0.22
26-06-2024	536.81	3.98	9.78	6.62	4.02	3.45	5.80	3.91	5.10	3.88	2.35	3.83	2.70	4.10	10.25	4.64	2.59	1.39	2.66	1.58	1.74	-0.15	-0.02
27-06-2024	536.33	4.07	10.18	7.30	4.20	3.73	5.68	4.44	5.64	4.33	2.50	4.08	2.90	4.07	10.33	4.80	2.70	1.49	2.82	1.96	1.79	-0.02	0.10
28-06-2024	536.27	4.06	10.28	7.58	4.71	4.22	5.70	4.64	5.86	4.65	3.08	4.47	3.12	4.11	10.34	4.81	2.85	1.56	2.81	2.00	1.86	0.12	0.21
29-06-2024	536.59	3.66	10.22	7.83	4.90	4.58	5.98	4.65	5.83	4.76	3.18	4.92	3.50	4.06	10.25	4.76	2.76	1.56	2.83	1.98	1.88	0.20	0.31
30-06-2024	536.03	3.40	10.34	7.91	5.11	4.92	6.76	4.80	5.97	4.80	3.32	5.17	3.74	4.29	10.30	4.76	2.75	1.56	2.99	2.00	1.82	0.40	0.47
01-07-2024	536.00	3.36	10.08	7.88	5.16	5.02	6.89	5.42	6.57	4.98	3.37	5.20	3.82	4.40	10.55	4.84	2.68	1.55	3.10	2.15	1.78	0.86	0.66
Flood level		12.80	18.00	16.00	12.50	12.00	14.50	12.50	14.00	12.50	13.00	14.50	12.00	12.00	23.00	16.20	12.00	11.00	7.90	8.00	10.00	4.50	4.00

Table A2: Weekly observed rainfall

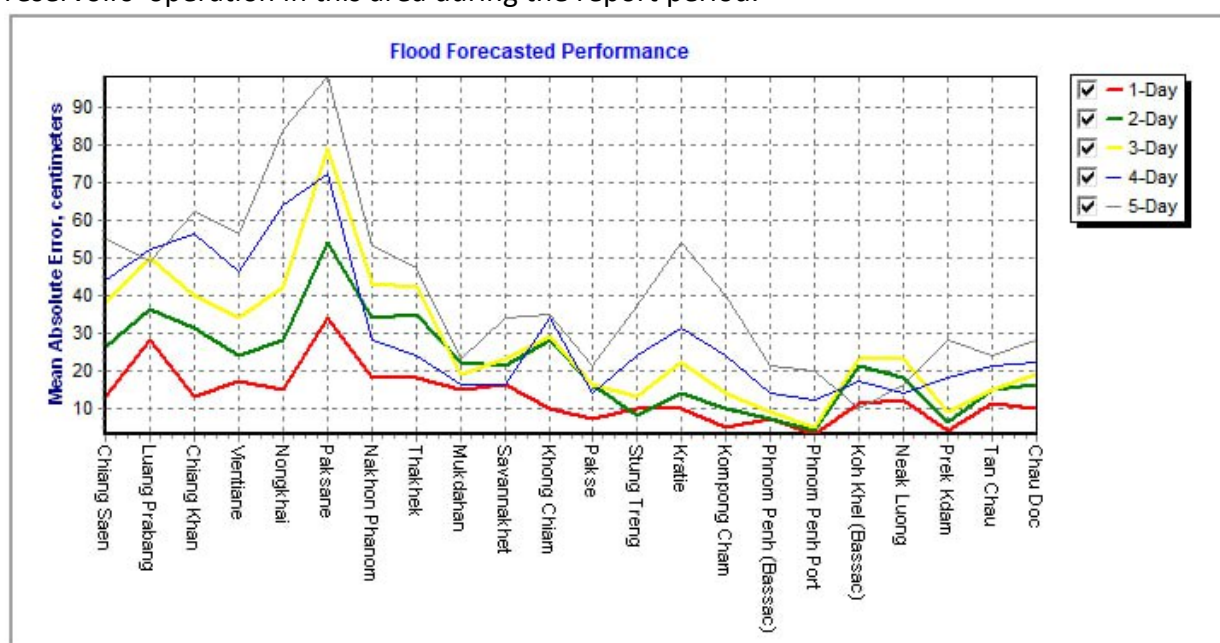
2024	Jinghong	Chiang Saen	Luang Prabang	Chiang Khan	Vientiane	Nongkhai	Paksane	Nakhon Phanom	Thakhek	Mukdahan	Savannakhet	Khong Chiam	Pakse	Stung Treng	Kratie	Kompong Cham	Phnom Penh (Bassac)	Phnom Penh Port	Koh Khel	Neak Luong	Prek Kdam	Tan Chau	Chau Doc
25-06-2024	0	8.7	35.8	0.5	18	7	25.7	6.4	2	7.3	16.2	1.7	7.4	4	0	14.5	0.5		0	0	7.3	0.4	4
26-06-2024	0	23	24.2	17.2	48.8	181	24.1	9.2	4.9	3.3	6.2	11.6	23.8	0	7.5	30.5	26.3		64.1	11.8	8.4	20.6	7
27-06-2024	0	7.8	13.8	3	38.7	112	18.9	27.5	17.4	3.3	7	0.6	0	2.5	2.6	7.5	64.2		0	3.6	32.3	0	2.2
28-06-2024	0	0	0	9.6	11	8	0.8	35.9	42.5	1	0	0	3.8	0	0	1.5	0.5		0	3.6	8.4	0	0.2
29-06-2024	0	0	0	0	0	0	22.2	24.5	33.6	33.1	28.3	0	6.6	0	0	5	9.7		0	0	0	0	3
30-06-2024	0	1.6	0	36	1.5	8.6	31.5	8	4.9	1	0	1	16.2	0	1.2	1.5	0		0	0	0	0	0
01-07-2024	0	3.1	11.6	0	0	0	6	36.9	35.4	2.4	0	3.1	14.4	0	0	0	0		0	0	34.3	2.4	2
Sum	0.0	44.2	85.4	66.3	118.0	317.3	129.2	148.4	140.7	51.4	57.7	18.0	72.2	6.5	11.3	60.5	101.2	0.0	64.1	19.0	90.7	23.4	18.4

## Annex C: Performance of the weekly flood forecasting

“Accuracy” here refers to the state where data recorded in the MRC’s Mekong River Flood Forecasting System are cleaned and verified.

The adjustment of flood forecasting outcomes from the flood forecasting system requires flood forecasters to have extensive knowledge in hydrology and statistical modelling for estimating the relationships between stations upstream and downstream in the Mekong River Basin. Flood forecasting performance presented in the graph below shows the average flood forecasting accuracy at each key station along the Mekong mainstream from 25 June to 01 July 2024.

The forecasting values from 25 June to 01 July 2024 show that the overall accuracy is fair for a four-day to five-day forecast in lead time (less than 250 cm) for all of the stations from the upper to the lower parts of the Mekong River with combine information of rainfall and reservoirs' operation in this area during the report period.



**Note:** The higher percentage of flood forecasting accuracy is due to several key factors as follows:

- Missing rainfall in Cambodia (DOM) data and data input are not sufficient to be used for inputting into the flood forecasting model system.
- Chiang Saen station is influenced by hydropower upstream operation from China.
- Luang Prabang to Chiang Khan and Paksane to Stung Treng to Kratie have been influenced by hydropower operations upstream, tributaries inflows.
- The influence of heavy rainfall caused by storms and hydropower operations from upstream, tributaries inflows and the lower part of the Mekong floodplain, including the 3S (Stung Treng and Kratie).
- Fluctuations of the water levels at Tan Chau and Chau Doc stations were due to daily tidal effects of the sea in the Mekong Delta.
- Satellite rainfall data were not representative of the actual rainfall at ground stations in some areas of the Mekong region.



## Mekong River Commission Secretariat

P. O. Box 6101, 184 Fa Ngoum Road, Unit 18 Ban Sithane Neua, Sikhottabong District, Vientiane 01000, Lao PDR

Tel: +856 21 263 263. Fax: +856 21 263 264 [www.mrcmekong.org](http://www.mrcmekong.org)

© Mekong River Commission 2024