



Mekong River Commission

**Weekly Dry Season Situation Report in
the Lower Mekong River Basin
12 - 18 November 2024**

Prepared by
The Regional Flood and Drought Management Centre
18 November 2024

The MRC is funded by contributions from its Member Countries and Development Partners, including Australia, Belgium, the European Union, Finland, France, Germany, Japan, Luxembourg, the Netherlands, Sweden, Switzerland, the United States and the World Bank.

Copyright © Mekong River Commission, 2024

First published (2020)

Some rights reserved.

This work is the product of the Mekong River Commission Secretariat. While all efforts are made to present accurate information, the Secretariat does not guarantee the accuracy of the data included in this work. The boundaries, colours, denomination, and other information shown on any map in this work do not imply any judgement on the part of the MRC concerning the legal status of any territory or the endorsement or acceptance of such boundaries.

Nothing herein shall constitute or be considered to be a limitation upon or waiver of the privileges and immunities of the MRC, all of which are specifically reserved.

This publication may be reproduced in whole or in part and in any form for educational or non-profit purposes without special permission from the copyright holder, provided acknowledgement of the source is made and notification is sent to the MRC. The MRC would appreciate receiving a copy of any publication that uses this publication as a source. This publication cannot be used for sale or for any other commercial purpose whatsoever without permission in writing from the MRC.

Title: Weekly dry season situation report in the Lower Mekong River Basin for 12 - 18 November 2024.

ISSN: 1728-3248

Keywords: Monitoring/forecasting/weather/the Mekong/the Tonle Sap Lake

For bibliographic purposes, this volume may be cited as:

Mekong River Commission. (2024). *Weekly dry season situation report in the Lower Mekong River Basin for 12 – 18 November 2024*. Vientiane: MRC Secretariat.

Information on MRC publications and digital products can be found at
<http://www.mrcmekong.org/publications/>

All queries on rights and licenses should be addressed to:

Mekong River Commission

Documentation and Learning Centre

184 Fa Ngoum Road, Unit 18, Ban Sithane Neua, Sikhottabong District, Vientiane 01000, Lao PDR

Telephone: +856-21 263 263 | E-mail: mrcs@mrcmekong.org | www.mrcmekong.org

Content

- Content..... i
- List of Figures..... ii
- List of Tables..... iii
- Key Messages iv
- 1 Introduction..... 22
- 2 General Weather Patterns 23
- 3. Rainfall and Water Level Monitoring 24
 - 3.1. *Rainfall monitoring* 24
 - 3.2. *Water level monitoring*..... 26
- 4. Flash Flood in the Lower Mekong Basin..... 30
- 5. Drought Monitoring in the Lower Mekong Basin 30
 - 5.2. *Weekly drought monitoring from 12 - 18 November 2024*..... 30
- 6 Weather and Water Level Forecast and Flash Flood information 33
 - 6.1 *Rainfall forecast* 33
 - 6.2 *Water level forecast*..... 35
 - 6.3 *Flash Flood Information* 37
 - 6.4 *Drought forecast* 37
- 7 Summary and Possible Implications..... 38
 - 7.1. *Rainfall and its forecast* 38
 - 7.2. *Water level and its forecast* 38
 - 7.3. *Flash flood and its trends*..... 38
 - 7.4. *Drought condition and its forecast* 38
- Annex A: Weekly water level monitoring at 22 key stations 39
- Annex B: Tables for weekly updated water levels and rainfall at the Key Stations..... 25

List of Figures

- Figure 1: Weather conditions over the LMB 23
- Figure 2: Outlook of wet and dry conditions over the Asian countries by ASMC..... 24
- Figure 3: One tropical storm risk observed on 18 November 2024..... 24
- Figure 4: Weekly rainfall distribution over the LMB during 12 – 18 November 2024..... 25
- Figure 5: The key stations along LMB for river flood forecasting 27
- Figure 6. Water level at the Jinghong hydrological station up to 18 November 2024..... 28
- Figure 7: Seasonal change of inflows and outflows of Tonle Sap Lake..... 29
- Figure 8. The seasonal change in monthly flow volume of Tonle Sap Lake..... 29
- Figure 9: Weekly standardized precipitation index from 12 – 18 November..... 31
- Figure 10: Weekly Index of Soil Water Fraction from 12 - 18 November..... 32
- Figure 11: Weekly Combined Drought Index from 12 - 18 November. 33
- Figure 12: Accumulated rainfall forecast from CHIRP-GFS (19 – 25 November 2024)..... 34
- Figure 13. Monthly forecasts of combined drought indicator for a) November, b) December 2024 and c) January 2025. 37

List of Tables

Table 1. The monthly change in the flow volume of Tonle Sap Lake. 30

Table 2. Weekly River Monitoring Bulletin. 36

Key Messages

Key messages for this weekly report are presented below.

Rainfall monitoring and forecast

- In the period of 12 - 18 November 2024, there has been light to moderate rainfall has been observed over the LMB.
- During 19 - 25 November 2024, the accumulated rainfall over the entire Lower Mekong Basin is distributed with light to moderate rain.

Water level monitoring and forecast

- At 22 key monitoring stations along the Mekong mainstream from 12 – 18 November 2024, water levels are below the long-term averages (LTAs) except for water level at Luang Prabang, and Nakhon Phanom stations. However, the 6 monitoring stations remain in normal condition with respect to the flow threshold (PMFM Thresholds). It is also the same condition for Tan Chau and Chau Doc monitoring stations, which are significantly influenced by sea tidal fluctuation.
- In the period of 19 – 25 November 2024, the water levels are forecasted to be decreasing at all stations. At Tan Chau and Chau Doc stations, the water levels are predicted to be also fluctuated, resulting from the influence of sea tidal patterns. Water levels at most of the stations are expected to be below their long-term averages (LTAs) except for Luang Prabang, station.

Drought condition and forecast

- During 12 - 18 November 2024, the LMB is experiencing normal conditions, except for some areas in the Mekong Delta, Cambodia, and the 3S Basin. The monitored drought is caused primarily by meteorological indicator.
During 19 - 25 November 2024, the LMB is likely at normal conditions, except some areas in the central part of Lao PDR and the northeastern part of Thailand.
- The next three-month from December 2024 to January 2025, the forecast indicates that no significant drought conditions are expected across the entire LMB during this period. However, in November and December 2024, the upper part of the LMB, including Xayabouly and Luang Namtha provinces, is anticipated to experience moderate drought conditions.

1 Introduction

This Weekly Dry Season Situation Report presents a preliminary analysis of the weekly hydrological situation in the Lower Mekong River Basin (LMB) for **12 - 18 November 2024**. The trend and outlook for water levels are also presented.

This analysis is based on the daily hydro-meteorological data provided by the Mekong River Commission (MRC) Member Countries – Cambodia, Lao PDR, Thailand, and Viet Nam – and on satellite data. The water level indicated in this report refers to an above zero gauge of each station.

The report covers the following topics that are updated weekly:

- General weather patterns, including rainfall patterns over the LMB.
- Water levels in the LMB, including in the Tonle Sap Lake.
- Flash flood and drought situation in the LMB.
- Weather, water level and flash flood forecast, and
- Possible implications.

Mekong River water levels are updated daily and can be accessed from:

<http://ffw.mrcmekong.org/bulletin.php>.

Drought monitoring and forecasting information is available at:

<http://droughtforecast.mrcmekong.org>

Flash flood information is accessible at: <http://ffw.mrcmekong.org/ffg.php>

2 General Weather Patterns

During the last week, the weak high-pressure system affected the upper and the central part of the Lower Mekong Basin. Light to moderate rain is expected over the region during this period

Figure 1 presents mean sea level pressure over the region. It is forecasted that the upper parts of Lower Mekong Basin will be influenced by the moderate to rather strong high-pressure system from 19 - 25 November. Therefore, in the upcoming seven days, over the Lower Mekong Basin are expected to experience light to moderate rainfall and thunderstorms.

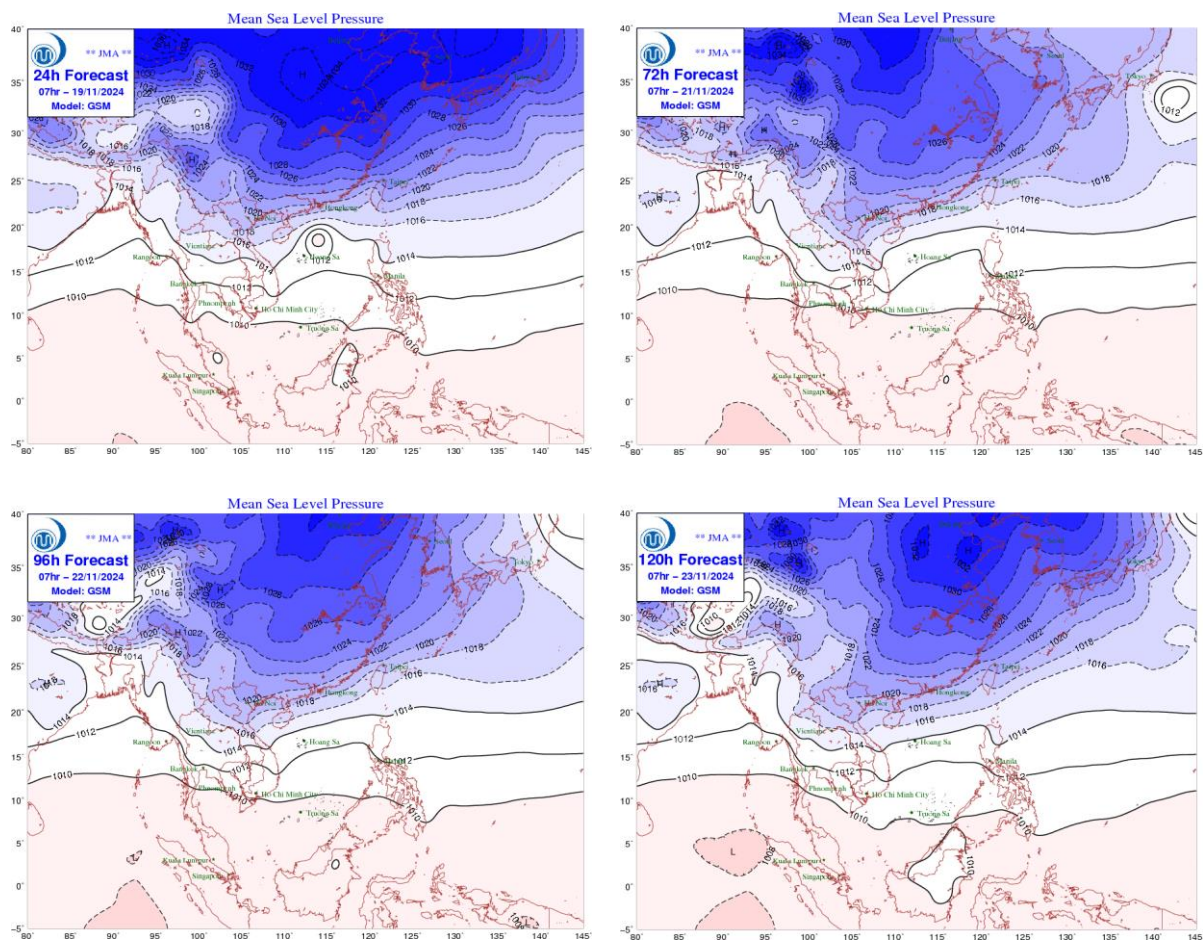


Figure 1: Weather conditions over the LMB

According to the ASEAN Specialised Meteorological Centre (ASMC, <http://asmc.asean.org/home/>), the subseasonal weather outlook (11 – 24 November 2024) indicates that the central to lower part of the Lower Mekong Basin (LMB) is likely in wetter conditions. Moreover, the warmer conditions are predicted to occur at the downstream part of LMB, particularly the Delta. **Figure 2** shows the outlook of weather condition from 11 to 24 November 2024 in Southeast Asia based on results from the NCEP model (National Centres for Environmental Prediction).

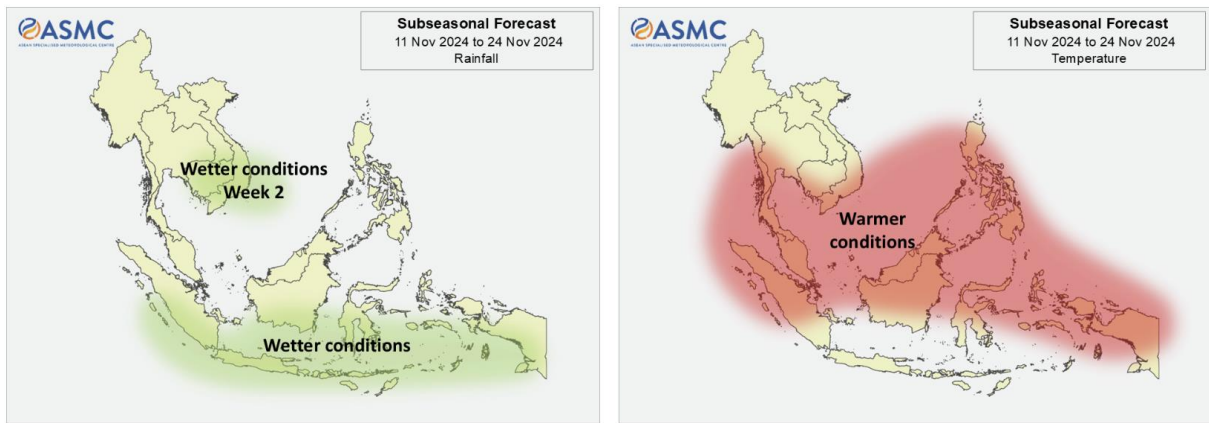


Figure 2: Outlook of wet and dry conditions over the Asian countries by ASMC.

Based on the tropical storm risk (TS) (https://www.jma.go.jp/jma/jma-eng/jma-center/rsmc-hp-pub-eg/RSMC_HP.htm), there is one active NW pacific system as of 18 November 2024 as displayed in **Figure 3**.

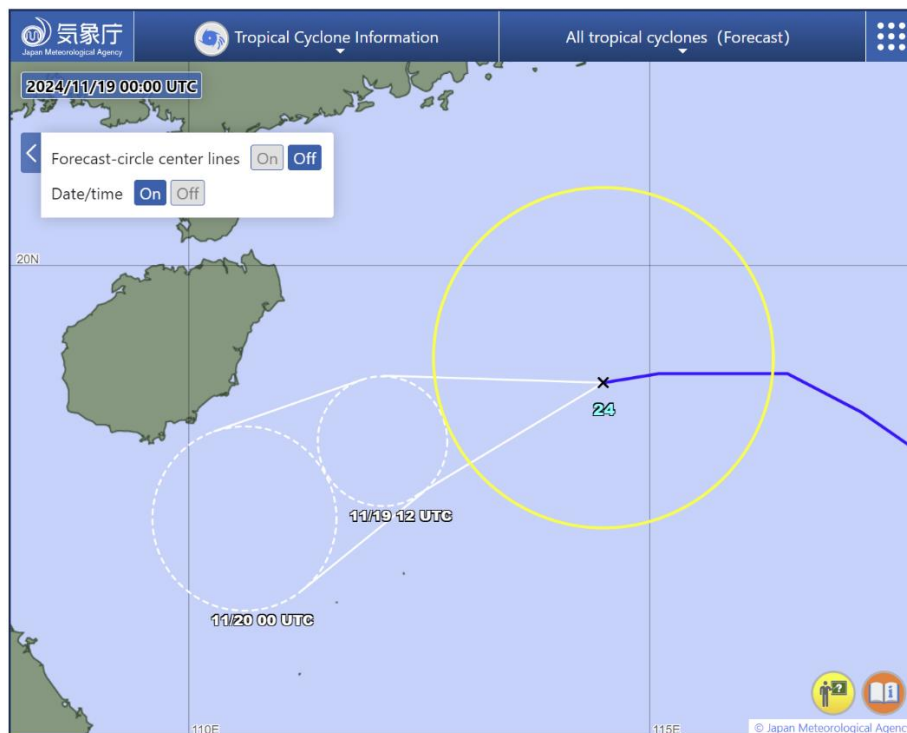


Figure 3: One tropical storm risk observed on 18 November 2024

3. Rainfall and Water Level Monitoring

3.1. Rainfall monitoring

The weekly accumulated rainfall based on the observed data provided by the MRC Member Countries – Cambodia, Lao PDR, Thailand, and Viet Nam – from 12 - 18 November 2024 (**Figure 4**). The light to moderate rainfall has been only observed over the LMB.

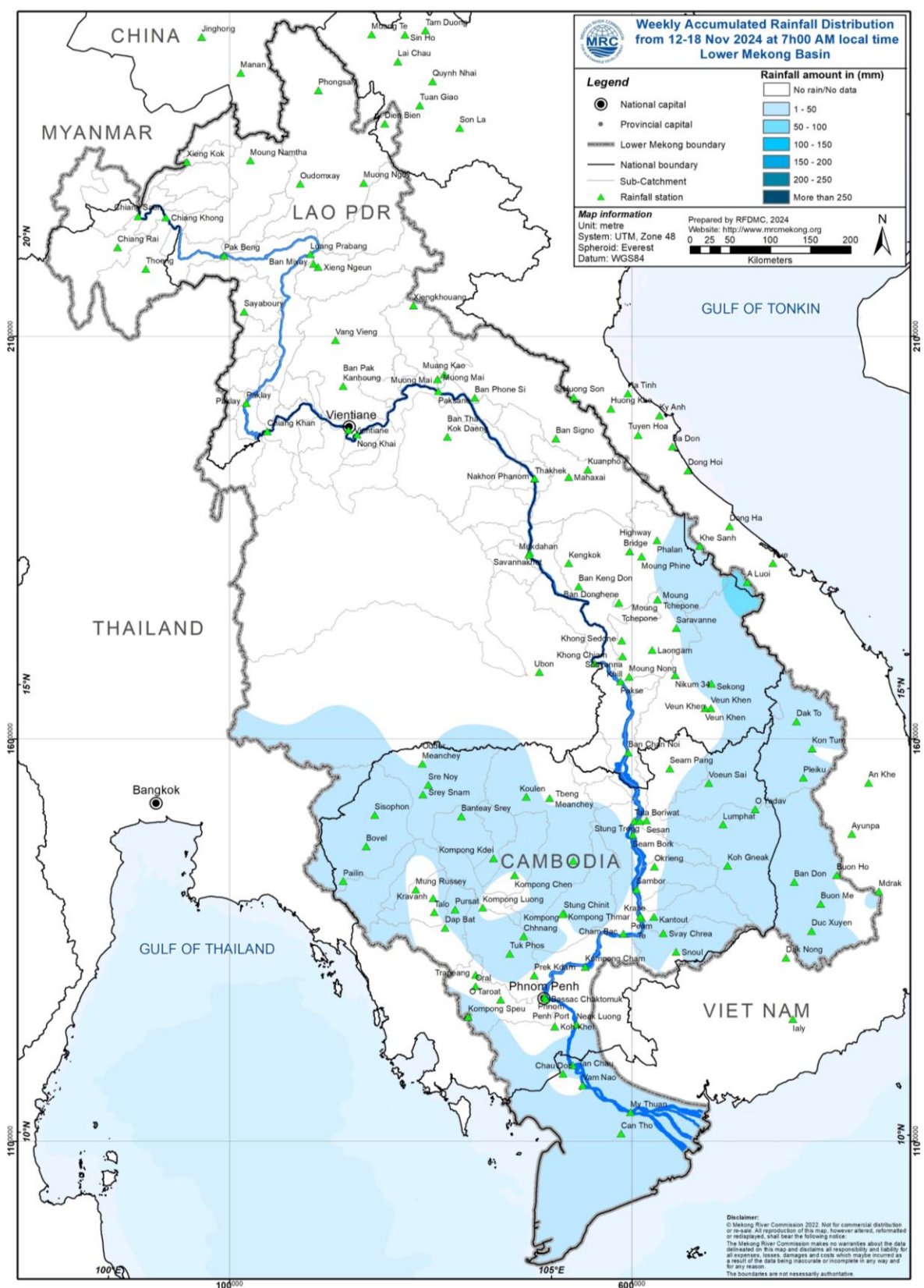


Figure 4: Weekly rainfall distribution over the LMB during 12 – 18 November 2024

3.2. Water level monitoring

The hydrological regimes of the Mekong mainstream are illustrated by recorded water levels and flows at key mainstream stations: at Chiang Saen to capture mainstream flows entering from the Upper Mekong Basin (UMB); at Vientiane to present flows generated by climate conditions in the upper part of the LMB; at Pakse to investigate flows influenced by inflows from the larger Mekong tributaries; at Kratie in Cambodia to capture overall flows of the Mekong Basin; and at Viet Nam's Tan Chau and Chau Doc to monitor flows to the Delta.

The key stations along the LMB and their respective model application for River Flood Forecasting during the wet season from June to October and River Monitoring during the dry season from November to May are presented in **Figure 5**. The hydrograph for each key station is available from the MRC's River Flood Forecasting: <http://ffw.mrcmekong.org/overview.php>.

During 12 – 18 November 2024, the observed water level (WL) at Jinghong hydrological station¹, was almost constant and ranges between 535.79 m and 536.08 m, which are corresponding to the outflow between 1,210.00 m³/s to 1,430.00 m³/s (recorded on 7:00 am), respectively (**Figure 6**). The water level in Chiang Saen Station also indicated a slight fluctuation ranging from 3.96 m to 2.54 m. At the same period, the water level in Luang Prabang station also slightly increased with an approximate value of 0.10 m from 9.64 m to 9.74 m as compared to the previous week. In addition, the water level at Chiang Khan station has been decreasing from 6.61 m to 6.31 m.

During the same period, the water levels observed at upper parts of the basin from Vientiane to Savannakhet stations have been slightly increasing. At Vientiane, Nong Khai, Paksane, Nakhon Phanom, Thakhek, Mukdahan, and Savannakhet, the water levels have slightly increased from 3.68 m to 3.77 m, 3.16 m to 3.27 m, 4.19 m to 4.50 m, 3.12 m to 3.45 m, 4.36 m to 4.66 m, 3.31 m to 3.42 m, and 1.77 m to 1.89 m, respectively. However, water levels at Khong Chiam and Pakse stations have been dropped from 4.19 m to 3.80 m, and 2.90 m to 2.63 m, respectively. Moving down to the floodplain area at Stung Treng, Kratie, Kampong Cham, Phnom Penh (Bassac), Phnom Penh Port, Koh Khel, and Prek Kdam, water levels have also decreased from 4.17 m to 3.59 m, 10.81 m to 9.50 m, 6.40 m to 5.30 m, 5.33 m to 4.55 m, 4.22 m to 3.40 m, 4.95 m to 4.25 m, and 4.02 m to 3.26 m, respectively.

Similar to the previous week, the water levels from 12 to 18 November 2024 at Viet Nam's Tan Chau and Chau Doc fluctuated between their LTA values due to daily tidal effects from the sea. At the Tan Chau station, the water levels varied between 5.46 m and 4.86 m, while at the Chau Doc station, they ranged from 2.14 m and 2.15 m.

¹ Near-real time data of hydro-meteorological monitoring at the Jinghong hydrological station is available at <https://portal.mrcmekong.org/monitoring/river-monitoring-telemetry>.

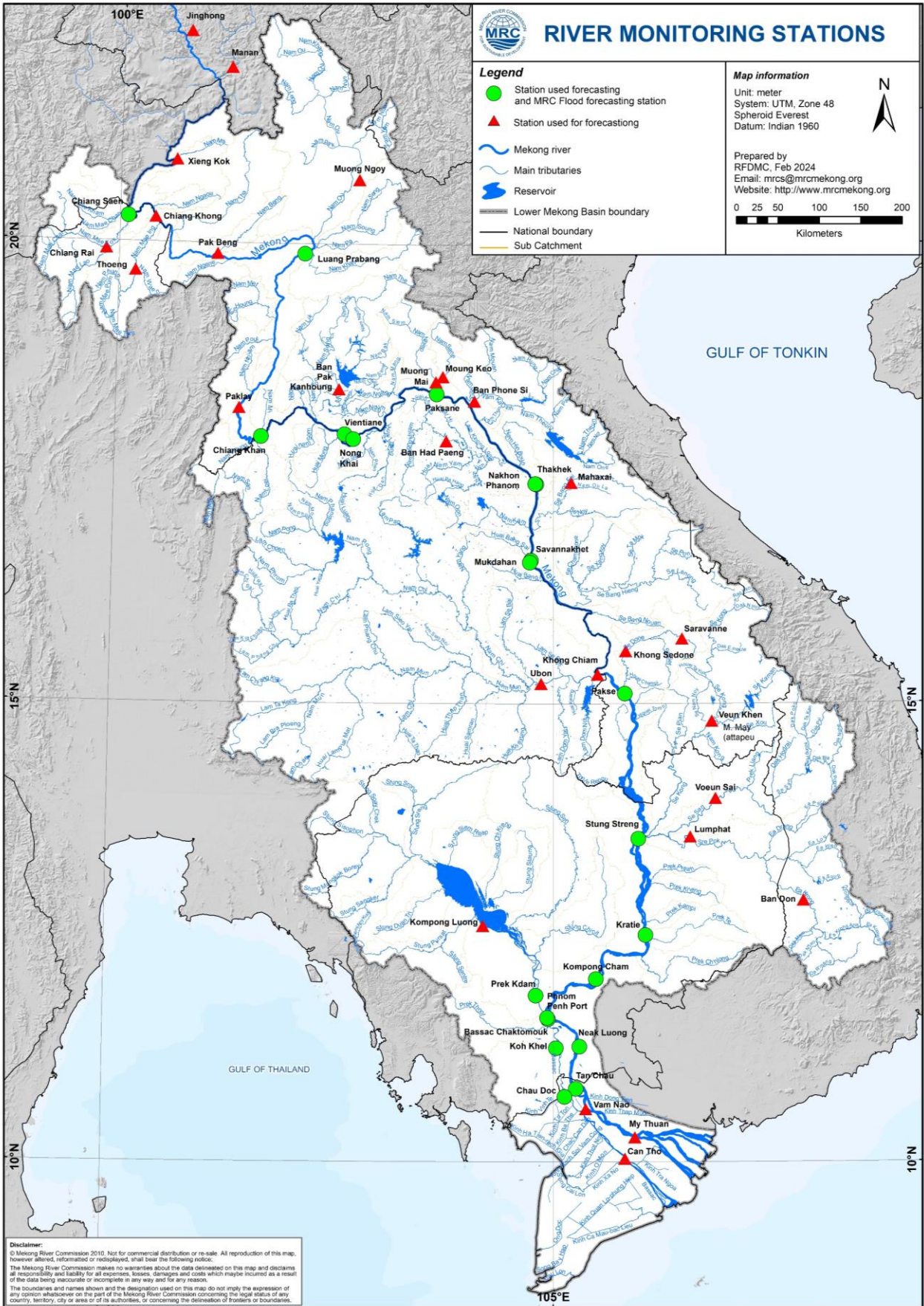


Figure 5: The key stations along LMB for river flood forecasting

The water levels in key monitoring stations on 18 November 2024 are below their long-term averages (LTAs) except for the Luang Prabang station. Moreover, all stations with available PMFM thresholds are in normal conditions. The graphics of water level monitoring in all key stations are presented in **Annex A** and the weekly water levels and rainfall at each key station are summarised in **Annex B**.

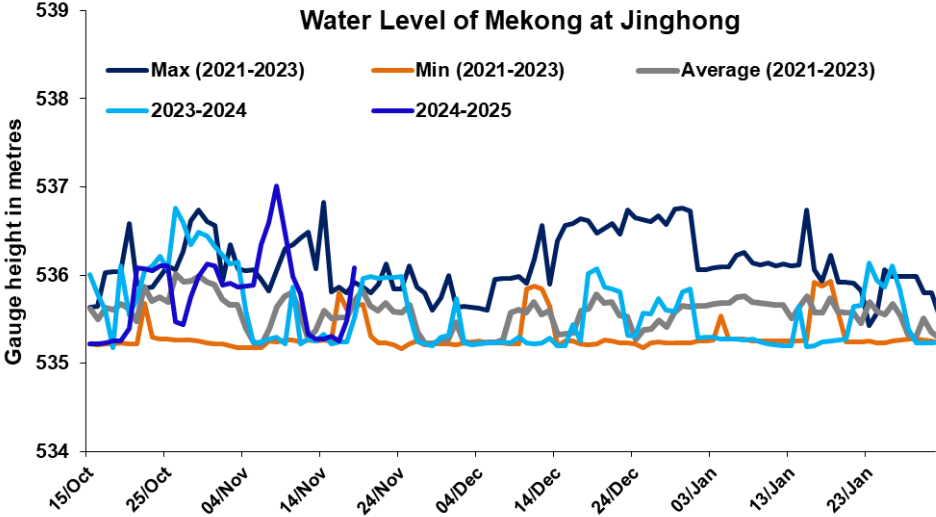


Figure 6. Water level at the Jinghong hydrological station up to 18 November 2024.

At the end of the wet season, when water levels along the Mekong River subside, the outflow of the Tonle Sap Lake (TSL) returns to the Mekong River and then to the Delta. This phenomenon normally takes place between September and October. Based on flow observation at Prek Kdam monitoring station, the outflow of the Tonle Sap Lake took place since 02 October 2024.

The outflow flow is calculated based on a formula of rating-curves using by difference of water levels at Kompong Luong and Phnom Penh Port stations for slop and Prek Kdam as cross-section of the Lake. The formula of flow is as follows:

$$Flow = WL_{Prek\ Kdam}^{1.2} \times \sqrt{|WL_{Phnom\ Penh\ Port} - WL_{Kompong\ Luong}|}$$

Where, WL is water level in m (msl).

The seasonal changes of the inflow/reverse flow and the outflow of the TSL at Prek Kdam in comparison with the flows of 2020, 2021 and 2022, 2023 and their LTA level (1997-2023) are illustrated in **Figure 8**. Up to 18 November 2024, it was observed that the main outflow to Tonle Sap Lake decreased due to no rainfall and less inflows from upstream (**Figure 8**). This decreased outflow of Tonle Sap Lake was most likely caused by low inflows from its tributaries.

The seasonal changes in monthly flow volumes up to 18 November 2024 for the TSL compared with that in 2020, 2021, 2022, 2023 and their LTAs, and the fluctuation levels (1997–2023) are presented in **Table 1**. The mean monthly water volume of the Tonle Sap Lake in October 2024

is lower than its LTA (about 81.91 %), and 2023 but higher than that in 2019, 2020, 2021 and 2022 during the same period (**Figure 8 and Table 1**).

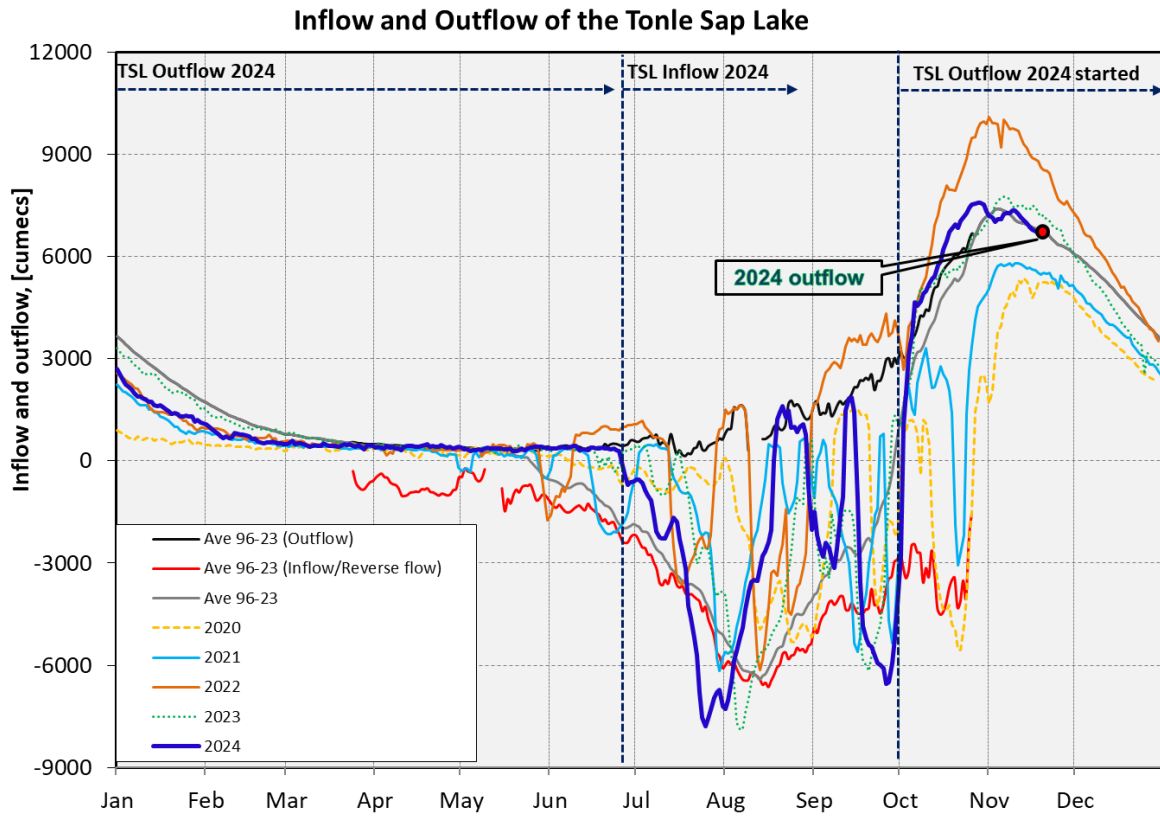


Figure 7: Seasonal change of inflows and outflows of Tonle Sap Lake.

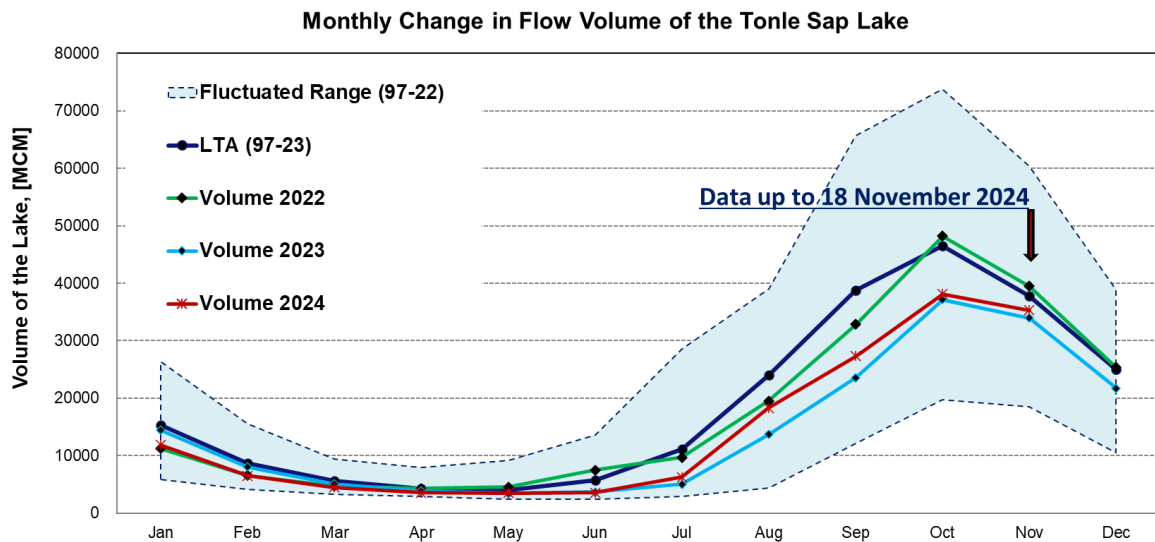


Figure 8. The seasonal change in monthly flow volume of Tonle Sap Lake.

Table 1. The monthly change in the flow volume of Tonle Sap Lake.

Month	LTA (97-22) [MCM]	Max Volume [MCM]	Min Volume [MCM]	Volume 2019 [MCM]	Volume 2020 [MCM]	Volume 2021 [MCM]	Volume 2022 [MCM]	Volume 2023 [MCM]	Volume 2024 [MCM]	Volume in 2024 [%], compared with its LTA
Jan	15322.86	26357.53	5906.80	10285.31	5906.80	9923.80	11214.32	14422.11	11824.86	77.17
Feb	8723.39	15596.22	4198.60	6019.30	4264.19	5832.97	6558.79	8069.29	6505.88	74.58
Mar	5602.68	9438.24	3347.07	4354.62	3553.99	4264.88	4736.52	5080.64	4488.23	80.11
Apr	4327.36	8009.14	2866.91	3667.47	2992.61	3556.68	4288.31	3884.16	3569.01	82.48
May	4027.82	9176.93	2417.81	3266.43	2594.92	3240.78	4556.83	3438.66	3517.79	87.34
Jun	5699.50	13635.01	2468.70	3517.06	2641.88	3798.29	7489.04	3689.97	3586.07	62.92
Jul	11188.79	28599.56	2925.86	4001.99	2925.86	5346.73	9703.79	5062.21	6247.29	55.84
Aug	24070.98	39015.12	4433.46	7622.71	5941.07	10547.80	19554.70	13694.57	18304.81	76.05
Sep	38787.47	65632.35	12105.31	24194.19	12105.31	16382.34	32860.34	23550.60	27310.26	70.41
Oct	46562.09	73757.23	19705.50	30358.38	20799.13	27318.21	48199.12	37141.40	38139.87	81.91
Nov	37739.30	60367.33	18534.61	19112.65	27546.80	28982.93	39452.53	33929.52	35327.05	93.61
Dec	25009.52	38888.95	10563.49	10577.29	18251.65	20170.76	25346.65	21757.70		
	Critical situation: lower than long-term minimum values (LTMIN)									
	Normal condition: within the range of long-term min (LTMIN) and max (LTMAX) values									
	Low volume situation: lower than long-term average (LTA)									
Unit: Million Cubic Meter (1 MCM= 0.001 Km ³)										

Remarks: the volume of Tonle Sap Lake in 2024 is updated until 18 November 2024.

4. Flash Flood in the Lower Mekong Basin

During the weekly monitoring period from 12 – 18 November, the LMB received light to moderate rain and thunderstorms in some areas.

According to the MRC-Flash Flood Guidance System (MRC-FFGS) and analysis, flash flood events were not detected during the reporting period over the LMB.

5. Drought Monitoring in the Lower Mekong Basin

5.2. Weekly drought monitoring from 12 - 18 November 2024

Drought monitoring data for 2024 are available from Monday to Sunday every week; thus, the reporting period is normally delayed by one day compared to Flood and Flash Flood reports. We adopt the Index of Soil Water Fraction (ISWF) data obtained from FFGS to represent soil moisture of agricultural indicator for both dry and wet seasons.

- **Weekly Standardised Precipitation Index (SPI1)**

Meteorological indicator shows that from 12 - 18 November 2024, as shown in **Figure 9**, the LMB was facing normal conditions, except for some areas in the Mekong Delta, Cambodia, and the 3S Basin.

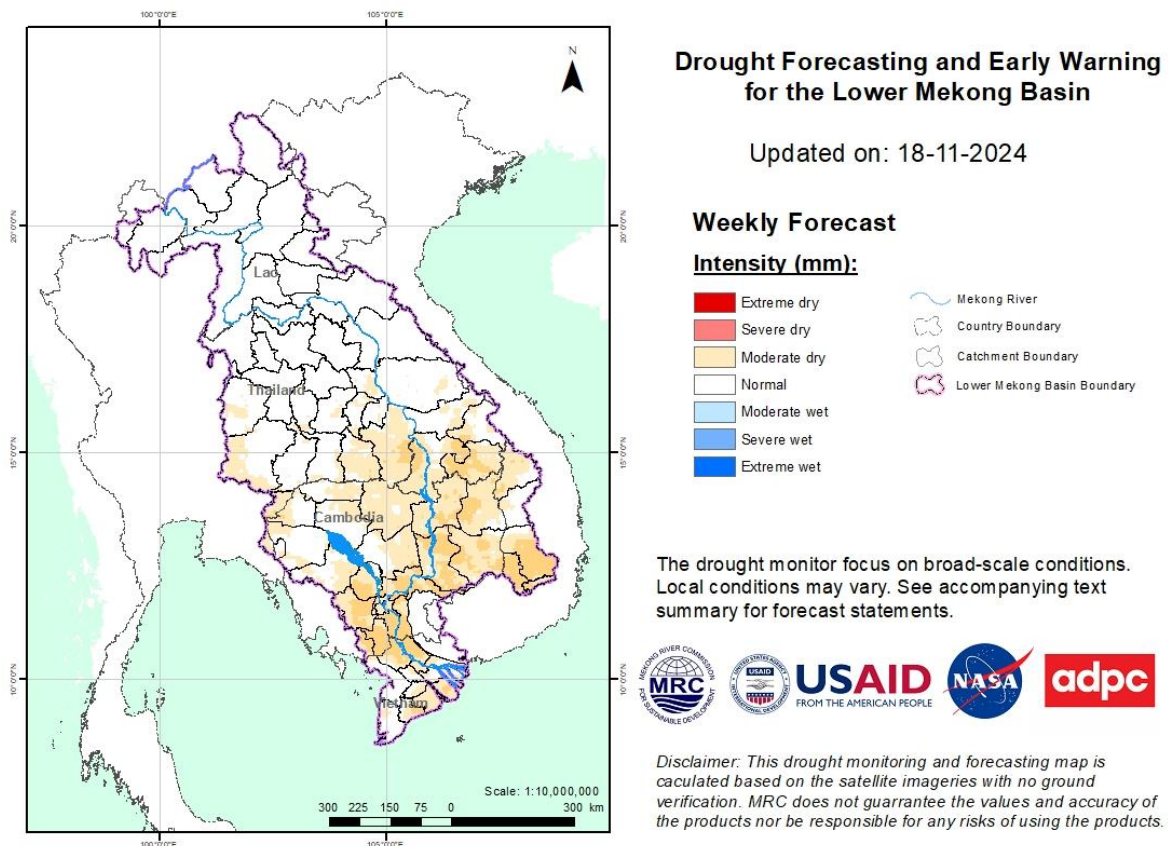
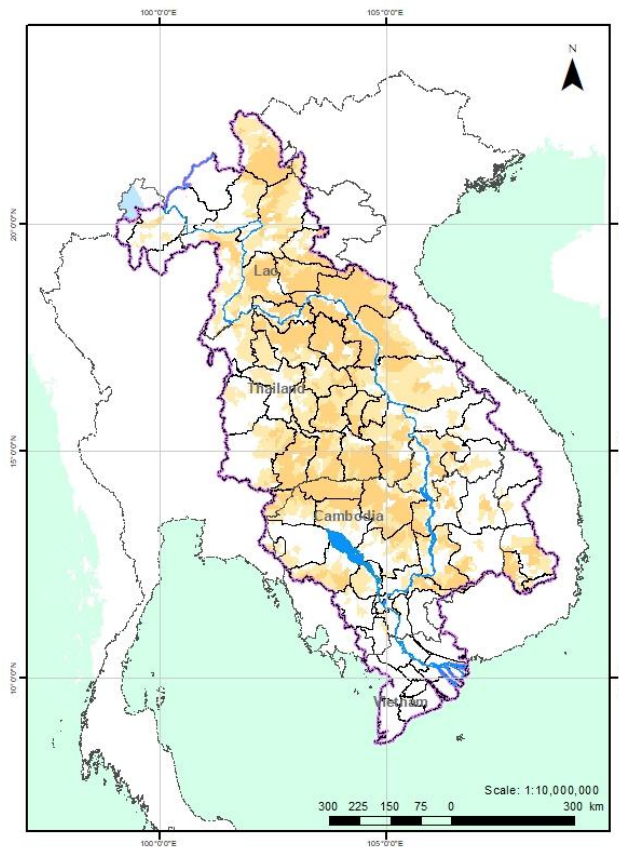


Figure 9: Weekly standardized precipitation index from 12 – 18 November.

- **Weekly Index of Soil Water Fraction (ISWF)**

Soil moisture conditions from 12 - 18 November 2024, as displayed in **Figure 10**, the LMB was facing a moderate moderate conditions over the region, except for the Mekong Delta.

Note: The index of soil water fraction presents the current soil water fraction conditions compared with normal month; therefore, it normally shows extremely dry during dry season which is completely different from SPI that is standardized to its specific month of the years. However, this does not mean that the areas are threatened by agricultural drought as generally during transition period of wet and dry seasons and dry season only the irrigated areas are used for agricultural plantation.



Drought Forecasting and Early Warning for the Lower Mekong Basin

Updated on: 18-11-2024

Weekly Forecast

Intensity (mm):



The drought monitor focus on broad-scale conditions. Local conditions may vary. See accompanying text summary for forecast statements.



Disclaimer: This drought monitoring and forecasting map is calculated based on the satellite imageries with no ground verification. MRC does not guarantee the values and accuracy of the products nor be responsible for any risks of using the products.

Figure 10: Weekly Index of Soil Water Fraction from 12 - 18 November.

- Weekly Combined Drought Index (CDI)

The combined drought indicator, **Figure 11**, shows that the central and lower part of the LMB experienced moderate to severe drought. However, some areas in Cambodia (Kratie), Lao PDR (Bolikhamxai), Thailand (Ubon Ratchathani, Sisaket), and Viet Nam (Dak Lak) experienced extreme drought.

The impacted areas are listed below:

Number	Country	Province	Moderate	Severe	Extreme	Exceptional	Number	Country	Province	Moderate	Severe	Extreme	Exceptional	Number	Country	Province	Moderate	Severe	Extreme	Exceptional
1	Cambodia	Battambang					24	Lao PDR	Oudomxai					47	Thailand	Udon Thani				
2	Cambodia	Banteay Meanchey		S			25	Lao PDR	Loungprabang		S			48	Thailand	Sakon Nakhon		S		
3	Cambodia	Kampong Cham					26	Lao PDR	Xayaburi					49	Thailand	Sueng Kan				
4	Cambodia	Pursat					27	Lao PDR	Xiangkhouang		S			50	Thailand	Nakhon Phanom			S	
5	Cambodia	Kampong Chhnang					28	Lao PDR	Vientiane		S			51	Thailand	Kalasin				
6	Cambodia	Otdar Meanchey		S			29	Lao PDR	Vientiane Capital					52	Thailand	Mukdahan				
7	Cambodia	Preah Vihear		S			30	Lao PDR	Xaisomboun		S			53	Thailand	Roi Et			S	
8	Cambodia	Kampong Thom		S			31	Lao PDR	Borikhamxai		S	S		54	Thailand	Yasothon				
9	Cambodia	Kratie		S	S		32	Lao PDR	Khammouan		S			55	Thailand	Amnat Charoen				
10	Cambodia	Monduliri		S			33	Lao PDR	Savanakhet		S			56	Thailand	Ubon Ratchathani		S	S	
11	Cambodia	Ratanakiri		S			34	Lao PDR	Salavan					57	Thailand	Si Sa Ket			S	S
12	Cambodia	Tbong Khmum		S			35	Lao PDR	Xekong					58	Thailand	Buri			S	
13	Cambodia	Prey Veng		S			36	Lao PDR	Attapu		S			59	Thailand	Buri Ram			S	
14	Cambodia	Kampot					37	Lao PDR	Champasack		S			60	Thailand	Nakhon Ratchasima				
15	Cambodia	Takeo					38	Thailand	Chiang Mai					61	Viet Nam	Kon Tum				
16	Cambodia	Svai Rieng		S			39	Thailand	Chiang Rai					62	Viet Nam	Gia Lai				
17	Cambodia	Stung Treng		S			40	Thailand	Payao					63	Viet Nam	Dak Nong				
18	Cambodia	Kampong Speu		S			41	Thailand	Loei					64	Viet Nam	Dak Lak		S	S	
19	Cambodia	Kandal		S			42	Thailand	Nong Bua Lam Phu					65	Viet Nam	Dong Thap				
20	Cambodia	Siem Reap		S			43	Thailand	Khon Kaen					66	Viet Nam	Tien Giang				
21	Lao PDR	Bokeo					44	Thailand	Nong Khai		S			67	Viet Nam	An Giang				
22	Lao PDR	Luangnamtha					45	Thailand	Chalyapum											
23	Lao PDR	Phongsali					46	Thailand	Maha Sarakham		S									

Other provinces of the Mekong Delta of Viet Nam have no data

Moderate Severe
Extreme Exceptional

Remarks: S: short-term drought, less than 1 months; L: long-term drought, more than 1 month

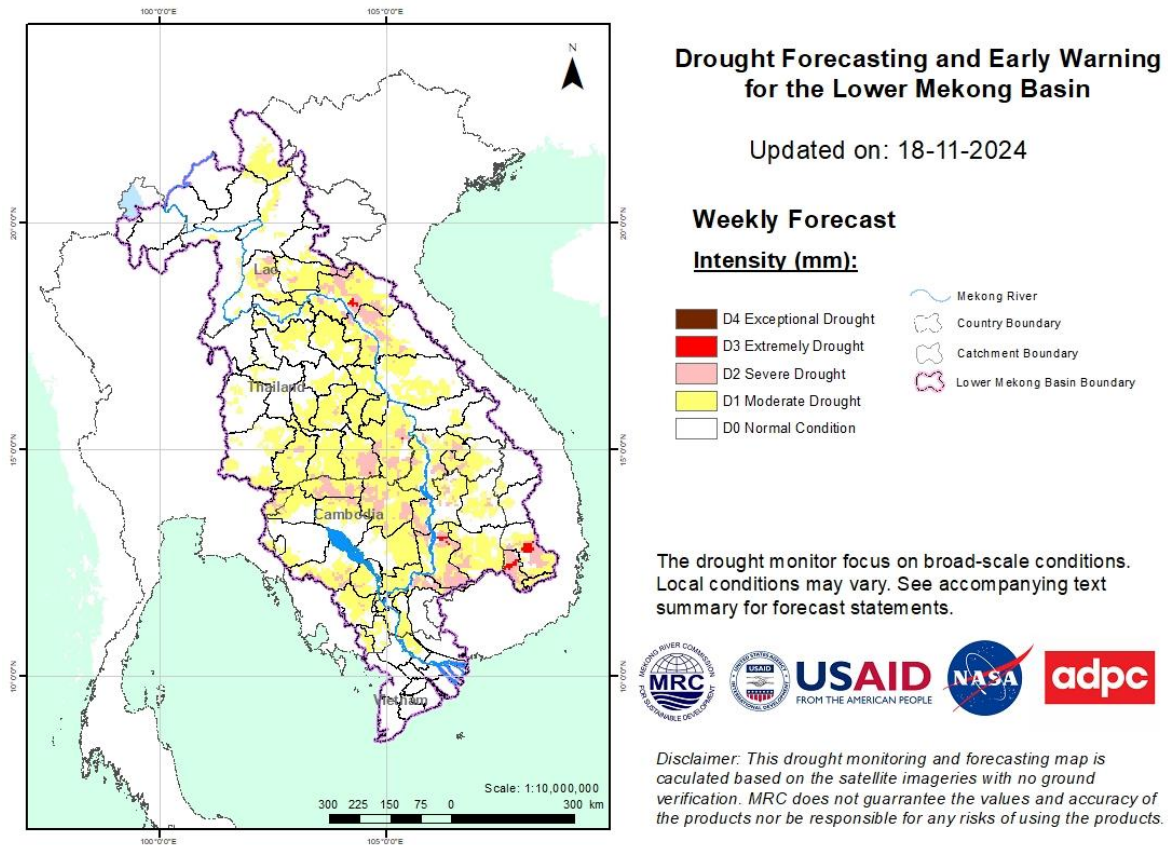


Figure 11: Weekly Combined Drought Index from 12 - 18 November.

More information on Drought Forecasting and Early Warning (DFEW) as well as the explanation is available here: <http://droughtforecast.mrcmekong.org/templates/view/our-product>. DFEW provides not only weekly monitoring and forecasting information but also a three-month forecast of drought indicators with seasonal outlook which are updated every month based on international weather forecast models. Details on drought forecast are described in section 6.4 of this report.

6 Weather and Water Level Forecast and Flash Flood information

6.1 Rainfall forecast

During 19 - 25 November 2024, the accumulated rainfall over the entire Lower Mekong Basin is distributed with light to moderate rain based on CHIRPS-GFS (**Figure 12**).

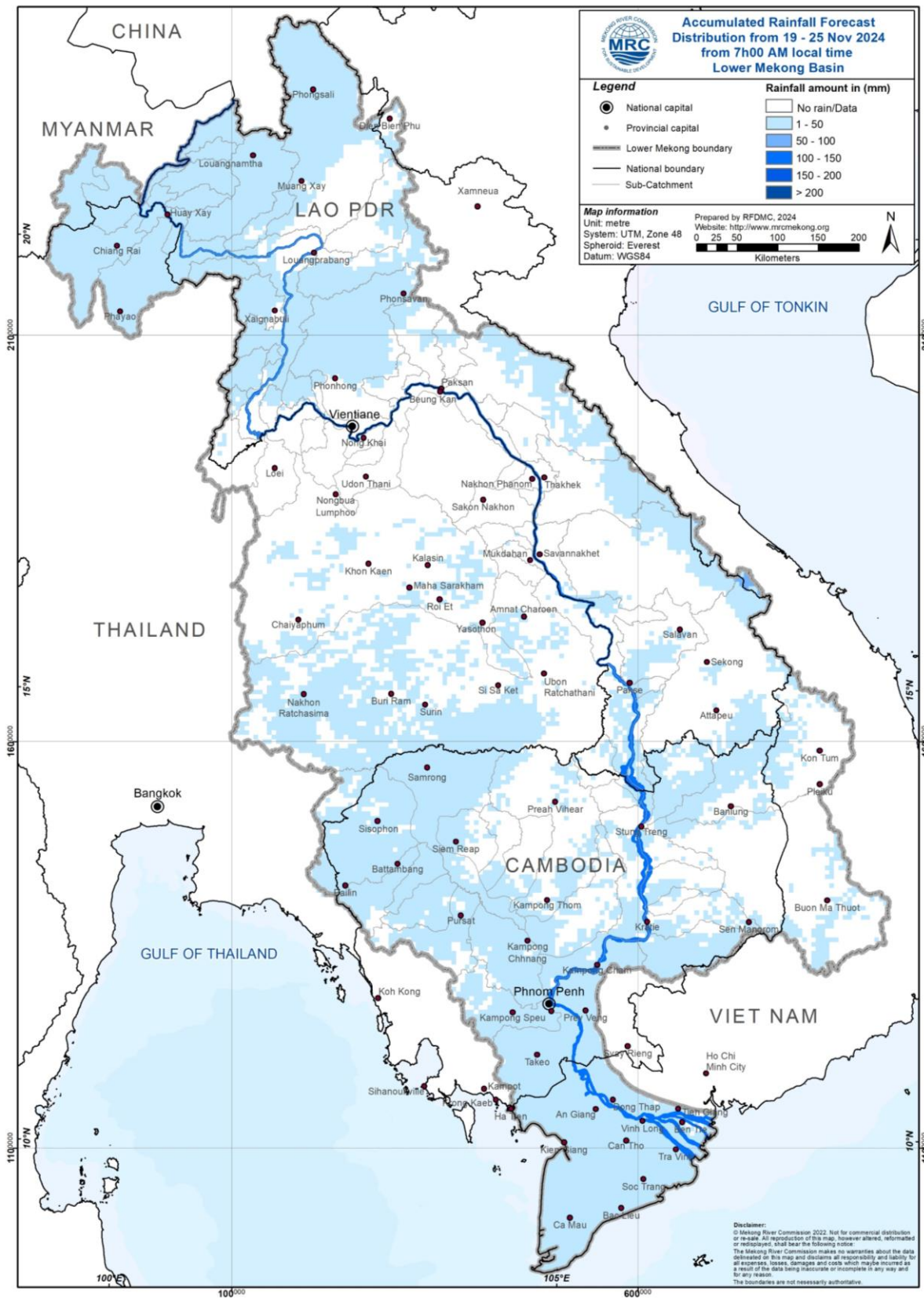


Figure 12: Accumulated rainfall forecast from CHIRP-GFS (19 – 25 November 2024)

6.2 Water level forecast

In Chiang Saen monitoring station, the water level is expected to be fluctuated over the forecasting period of 19 - 25 November 2024. However, it will slightly decrease from 2.43 m to 1.93 m. The water level in Luang Prabang stations affected by backwater is likely slightly increasing from 9.80 m to 9.85 m.

Along the Mekong mainstream, the water levels at all stations are expected to drop. At upper stretch at Chiang Khan, Vientiane, and Nongkhai, water levels will slightly drop of approximately -0.09 m, -0.18 m, and -0.22 m, respectively. Moreover, water levels from Paksane downward are also expected to drop. At Paksane, Nakhon Phanom, Thakhek, Mukdahan, Savannakhet, Khong Chiam, and Pakse, the water levels are likely dropping approximately, -0.23 m, -0.36 m, -0.25 m, -0.25 m, -0.27 m, -0.29 m, -0.44 m, and -0.39 m, respectively.

Moving down at Stung Streng, Kratie, Kompong Cham, Phnom Penh Port, Phnom Penh (Bassac), Phnom Penh Port, Koh Khel, Neak Luong, and Prek Kdam stations, water levels will slightly drop of approximately -0.27 m, 0.63 m, -0.62 m, 0.52 m, 0.50 m, -0.35 m, -0.31 m, and -0.47 m, respectively.

For the Tan Chau station on the Mekong River and Chau Doc station on the Bassac River, water levels will be fluctuating approximately ranging from 2.09 m to 1.87 m and 2.23 m to 2.15 m, respectively, following daily tidal effects from the sea.

The water levels at key stations are forecasted to be below their LTAs except for Luang Prabang station from 19 to 25 November 2024.

The weekly River Monitoring Bulletin and forecasting issued on 18 November 2024 can be found in **Table 2**. Results of the weekly river monitoring and forecasting bulletin are also available at <http://ffw.mrcmekong.org/bulletin.php>

Table 2. Weekly River Monitoring Bulletin.

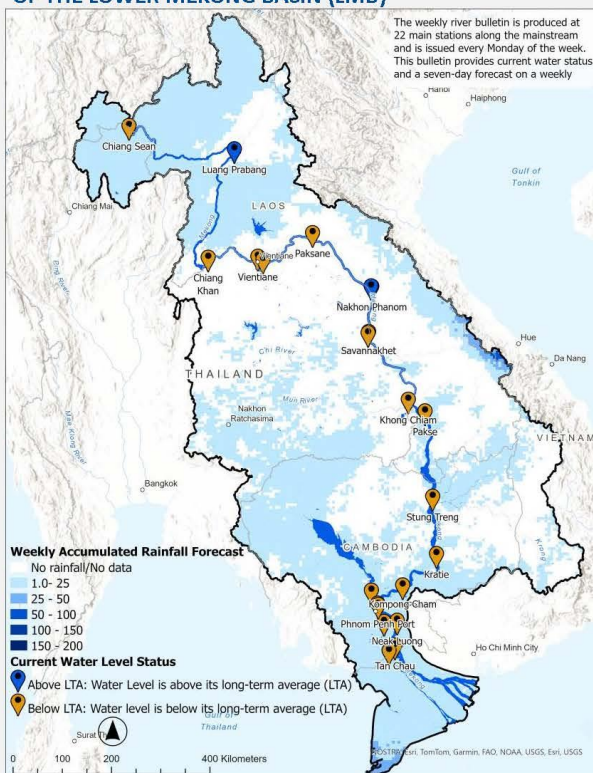


MEKONG RIVER MONITORING AND FORECASTING BULLETIN

Monitoring on 18 November 2024 and weekly forecasting from 19 to 25 November 2024

Highlights: Today's water levels at most of stations are below their LTA except for Luang Prabang and Nakhon Phanom stations. However, water levels at all stations are expected to drop and be below LTA in the next 7 days except for Luang Prabang station.

THE FORECASTING HYDROLOGICAL STATION MAP OF THE LOWER MEKONG BASIN (LMB)



NOTES

- In the next 7 days, light to moderate rainfall is likely to occur over the Lower Mekong Basin (LMB).
- Today's water level at all stations except for Luang Prabang and Nakhon Phanom stations is below their long-term averages (LTAs).
- Water levels at all stations along the Mekong mainstream are forecasted to be decreasing. The water levels at Tan Chau and Chau Doc are forecasted to be fluctuated due to sea tidal influence.
- Water levels at most of the stations are expected to be below LTAs except for Luang Prabang station.

CURRENT WATER LEVEL STATUS

Monitoring Station	Rainfall (mm)		Zero gauge amsl (m)		Water level against zero gauge (m)		Current Status	Flow Threshold (PMFM*GA)
	17-Nov	18-Nov	17-Nov	18-Nov	17-Nov	18-Nov		
Jinghong	0.0	-	535.48	536.08				
Chiang Saen	0.0	357.110	2.61	2.54	Below LTA			
Luang Prabang**	0.0	267.195	9.70	9.74	Above LTA			
Chiang Khan	0.0	194.118	6.36	6.36	Below LTA			
Vientiane	0.0	158.040	3.86	3.77	Below LTA			
Nongkhai	0.0	153.648	3.70	3.27	Below LTA			
Paksane	0.0	142.125	4.81	4.50	Below LTA			
Nakhon Phanom	0.0	130.961	3.40	3.45	Above LTA			
Thakhek	0.0	129.629	4.60	4.66	Below LTA			
Mukdahan	nr	124.219	3.29	3.42	Below LTA			
Savannakhet	0.0	125.410	1.78	1.89	Below LTA			
Khong Chiam	0.0	89.030	3.75	3.80	Below LTA			
Pakse	0.0	86.490	2.63	2.63	Below LTA			
Stung Treng	0.0	36.790	3.64	3.59	Below LTA			
Kratie	0.0	-1.080	9.56	9.50	Below LTA			
Kompong Cham	0.0	-0.930	5.38	5.30	Below LTA			
Phnom Penh (Bassac)	0.0	-1.020	4.66	4.55	Below LTA			
Phnom Penh Port	nr	0.000	3.59	3.40	Below LTA			
Koh Khel	nr	-1.000	4.32	4.25	Below LTA			
Neak Luong	0.0	-0.330	3.32	3.26	Below LTA			
Prek Kdam	nr	0.080	4.95	4.86	Below LTA			
Tan Chau	0.0	0.000	2.22	2.15	Below LTA			
Chau Doc	nr	0.000	2.39	2.29	Below LTA			

* Procedures for Maintenance of Flows on the Mainstream
 ** Luang Prabang station is influenced by hydropowers at its upstream and downstream

WEEKLY WATER LEVEL FORECAST

Forecasting Station	Forecasted Water Levels (m)							Status	Trend
	19-Nov	20-Nov	21-Nov	22-Nov	23-Nov	24-Nov	25-Nov		
Jinghong	-	-	-	-	-	-	-	-	-
Chiang Saen	2.43	2.34	2.21	2.14	2.02	1.95	1.92	Below LTA	Decreasing
Luang Prabang	9.80	9.79	9.80	9.81	9.78	9.71	9.65	Above LTA	Decreasing
Chiang Khan	6.37	6.40	6.42	6.36	6.30	6.25	6.18	Below LTA	Decreasing
Vientiane	3.76	3.77	3.75	3.76	3.70	3.64	3.55	Below LTA	Decreasing
Nongkhai	3.26	3.28	3.25	3.23	3.18	3.10	3.04	Below LTA	Decreasing
Paksane	4.29	4.13	4.01	4.05	4.09	4.04	4.14	Below LTA	Decreasing
Nakhon Phanom	3.42	3.37	3.30	3.27	3.29	3.25	3.20	Below LTA	Decreasing
Thakhek	4.65	4.55	4.46	4.42	4.44	4.44	4.42	Below LTA	Decreasing
Mukdahan	3.32	3.29	3.26	3.22	3.25	3.27	3.25	Below LTA	Decreasing
Savannakhet	1.92	1.83	1.76	1.69	1.70	1.72	1.70	Below LTA	Decreasing
Khong Chiam	3.73	3.59	3.48	3.40	3.34	3.35	3.36	Below LTA	Decreasing
Pakse	2.59	2.47	2.36	2.29	2.22	2.22	2.24	Below LTA	Decreasing
Stung Treng	3.53	3.51	3.45	3.39	3.35	3.32	3.32	Below LTA	Decreasing
Kratie	9.40	9.29	9.23	9.12	9.01	8.93	8.87	Below LTA	Decreasing
Kompong Cham	5.22	5.12	5.04	4.95	4.85	4.76	4.68	Below LTA	Decreasing
Phnom Penh (Bassac)	4.49	4.41	4.32	4.25	4.18	4.10	4.03	Below LTA	Decreasing
Phnom Penh Port	3.36	3.27	3.19	3.12	3.05	2.97	2.90	Below LTA	Decreasing
Koh Khel	4.20	4.15	4.10	4.05	4.00	3.95	3.90	Below LTA	Decreasing
Neak Luong	3.21	3.17	3.13	3.09	3.05	3.00	2.95	Below LTA	Decreasing
Prek Kdam	4.79	4.73	4.66	4.60	4.53	4.46	4.39	Below LTA	Decreasing
Tan Chau	2.09	2.04	2.00	1.96	1.93	1.90	1.87	Below LTA	-
Chau Doc	2.23	2.18	2.14	2.11	2.07	2.10	2.15	Below LTA	-

MRC Secretariat, Vientiane, Lao PDR | E: mrc@mrcmekong.org | T: +856 21 263 263
 MRC Regional Flood and Drought Management Centre, Phnom Penh, Cambodia | E: floodforecast@mrcmekong.org | T: +855 23 425 353

<http://www.mrcmekong.org/>
http://fw.mrcmekong.org/bulletin_dry.php
http://fw.mrcmekong.org/report_dry.php
<https://pmfm.mrcmekong.org/>

DISCLAIMER
 This information is supplied as a service to the governments of the MRC Member Countries so that it may be used as a tool within existing national disaster forecast and warning systems.

6.3 Flash Flood Information

Flash flood events are not likely to happen in the LMB next week. However, local heavy rain in a short period of time might still be possible with unexpected short flash floods. During the dry season if extreme weather occurs, the information on flash flood guidance for the next one, three, and six hours is updated at <http://ffw.mrcmekong.org/ffg.php>.

Further detailed information on Flash Flood Information Warning, as well as on its explanation, is available for download [here](#).

6.4 Drought forecast

There are several climate-prediction models with different scenarios in the upcoming months. The MRC’s DFEWS adopts the global scale of North America Multi-Model Ensemble (NMME) for the seasonal outlook of rainfall.

Figure 13 below shows the monthly forecasts of combined drought indicator from October to December 2024 over the LMB area.

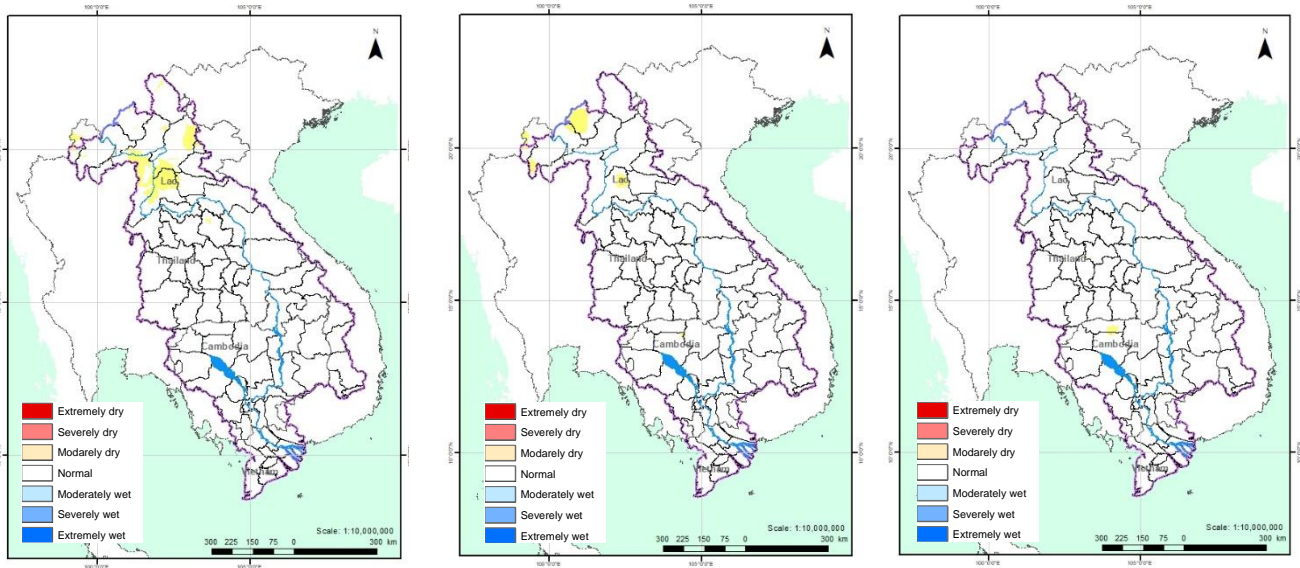


Figure 13. Monthly forecasts of combined drought indicator for a) November, b) December 2024 and c) January 2025.

Figure 13 illustrates the monthly drought forecast for the upcoming three months using the Combined Drought Indicator (CDI). The forecast indicates that no significant drought conditions are expected across the entire LMB during this period. However, in November and December 2024, the upper part of the LMB, including Xayabouly and Luang Namtha provinces, is anticipated to experience moderate drought conditions.

7 Summary and Possible Implications

7.1. Rainfall and its forecast

In the period of 12 – 18 November 2024, there has been light to moderate rainfall has been observed over the LMB.

During 19 - 25 November 2024, the accumulated rainfall over the entire Lower Mekong Basin is distributed with light to moderate rain.

7.2. Water level and its forecast

At 22 key monitoring stations along the Mekong mainstream from 12 – 18 November 2024, water levels are below the long-term averages (LTAs) except for water level at Luang Prabang, and Nakhon Phanom stations. However, the 6 monitoring stations remain in normal condition with respect to the flow threshold (PMFM Thresholds). It is also the same condition for Tan Chau and Chau Doc monitoring stations, which are significantly influenced by sea tidal fluctuation.

In the period of 19 – 25 November 2024, the water levels are forecasted to be decreasing at all stations. At Tan Chau and Chau Doc stations, the water levels are predicted to be also fluctuated, resulting from the influence of sea tidal patterns. Water levels at most of the stations are expected to be below their long-term averages (LTAs) except for Luang Prabang, station.

7.3. Flash flood and its trends

With the predicted of rainfall for the coming week as mentioned earlier in [section 6.1](#), major flash floods are not likely to happen in the LMB.

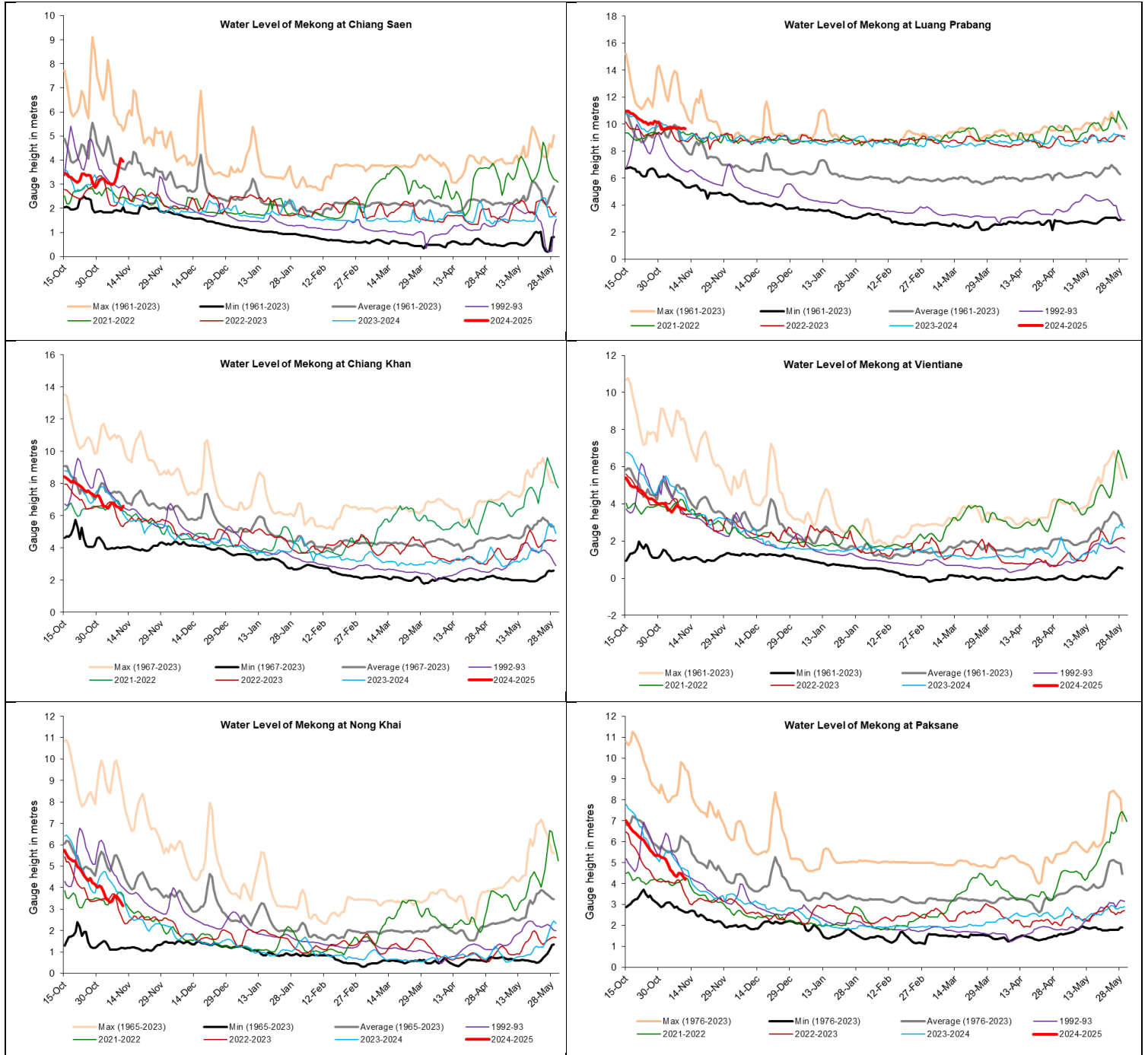
7.4. Drought condition and its forecast

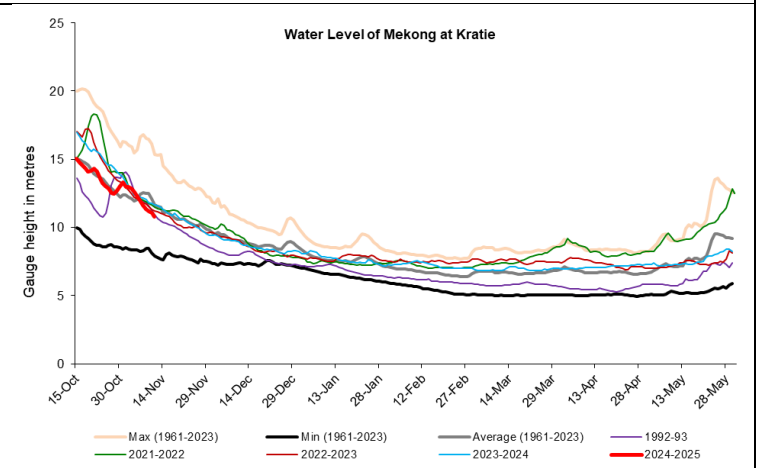
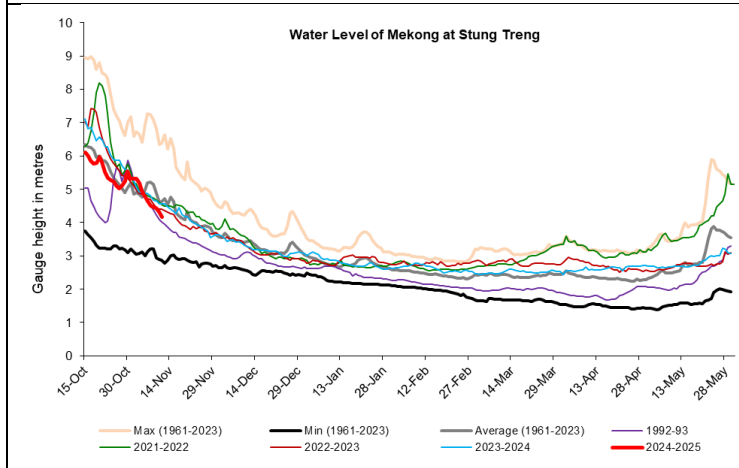
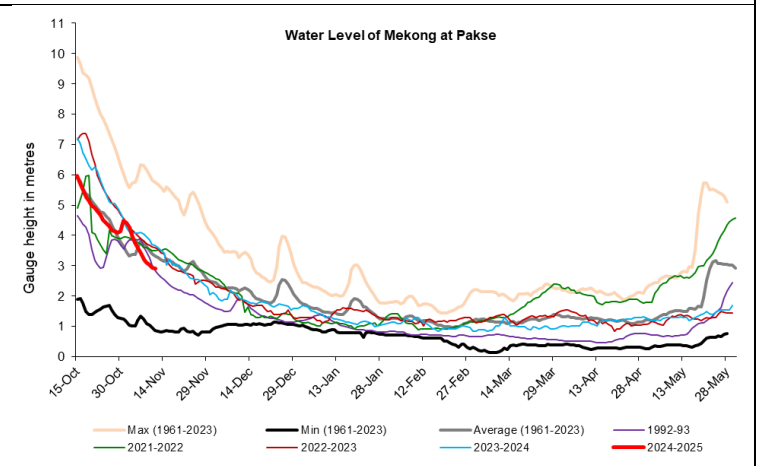
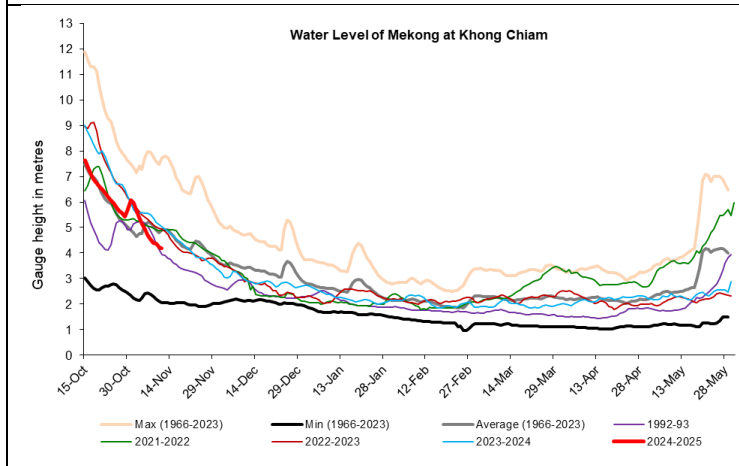
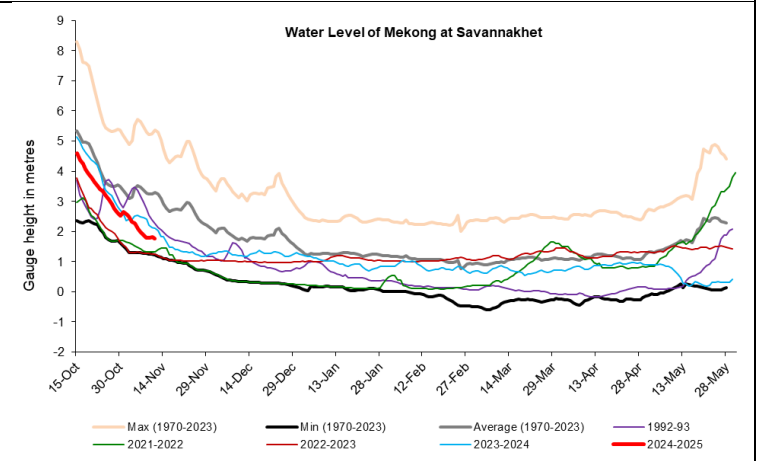
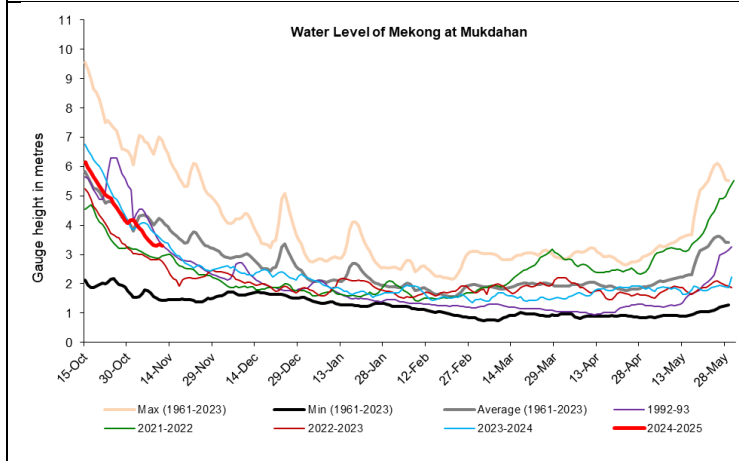
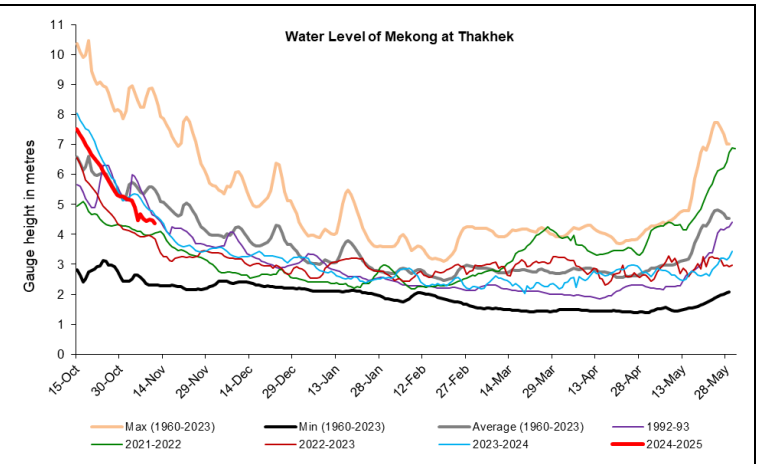
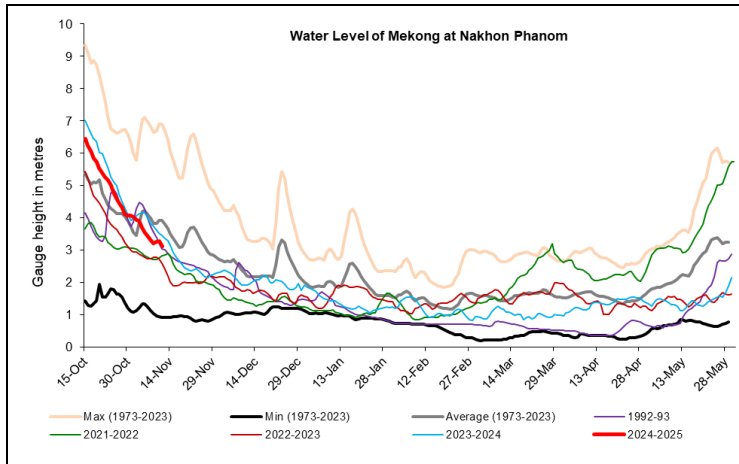
During 12 - 18 November 2024, the LMB is experiencing normal conditions, except for some areas in the Mekong Delta, Cambodia, and the 3S Basin. The monitored drought is caused primarily by meteorological indicator.

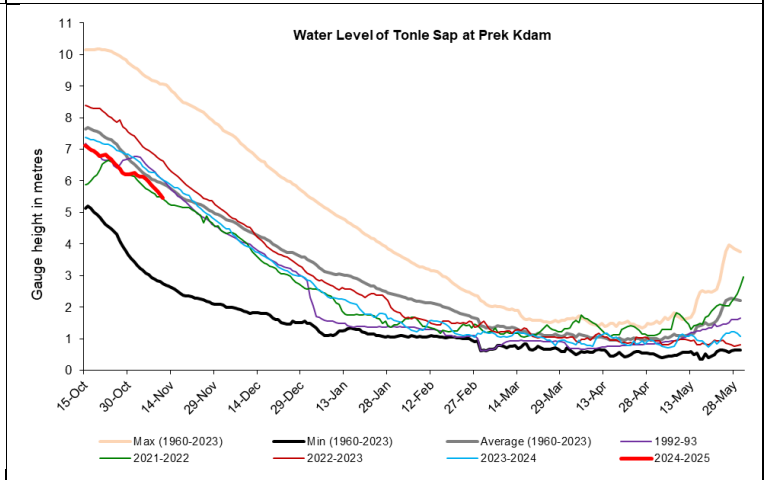
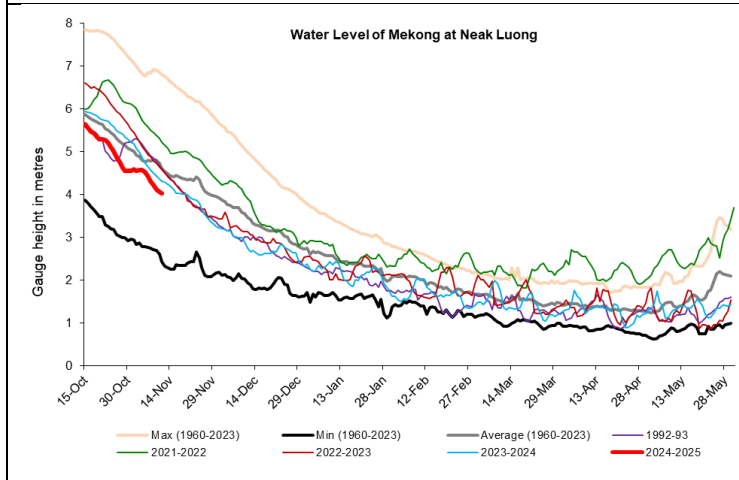
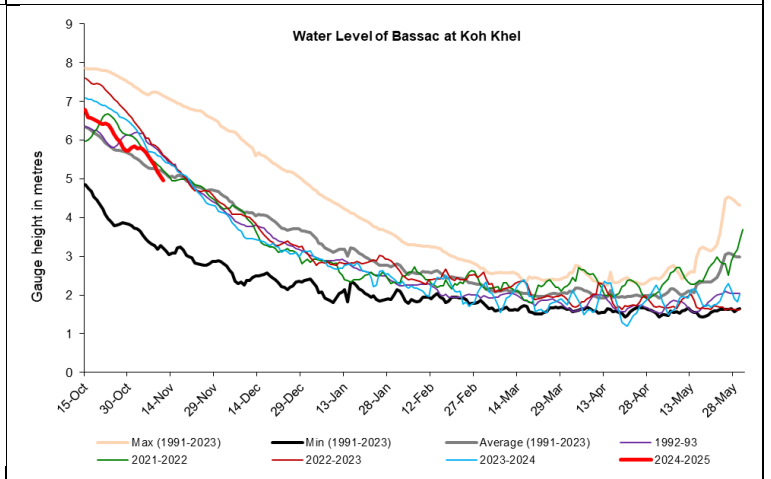
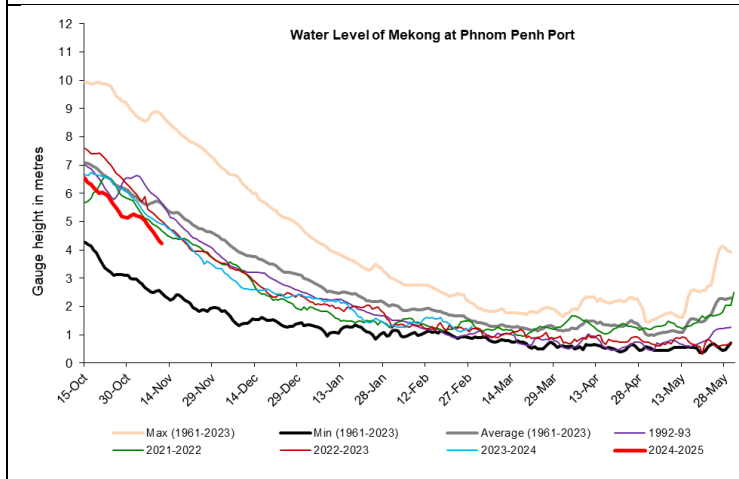
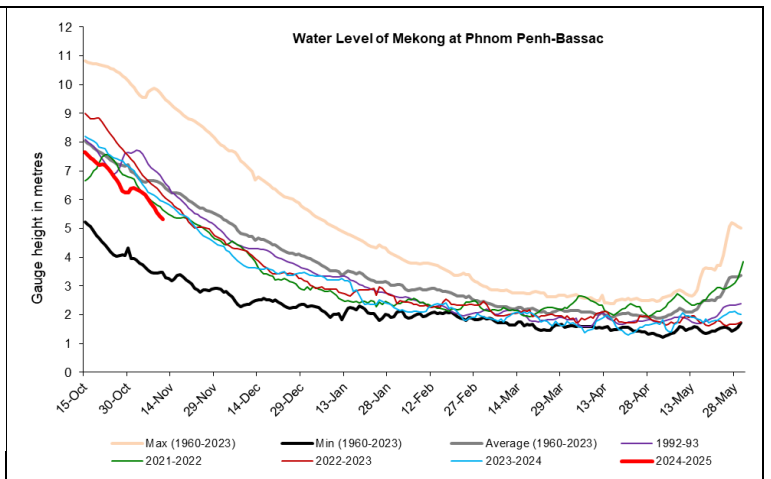
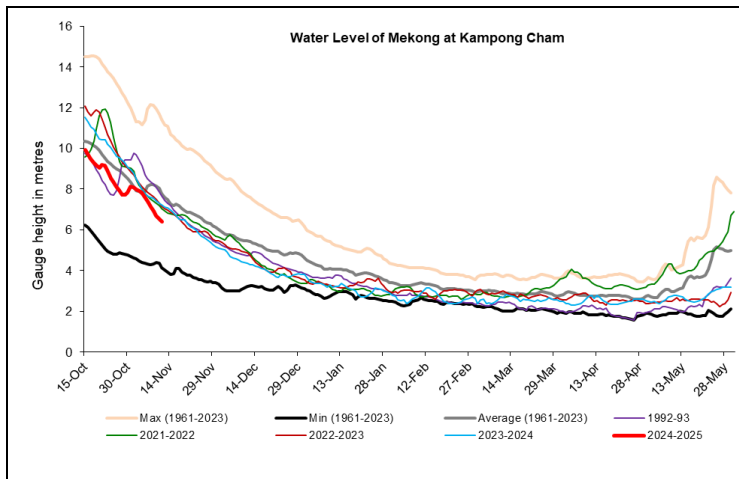
During 19 - 25 November 2024, the LMB is likely at normal conditions, except some areas in the central part of Lao PDR and the northeastern part of Thailand.

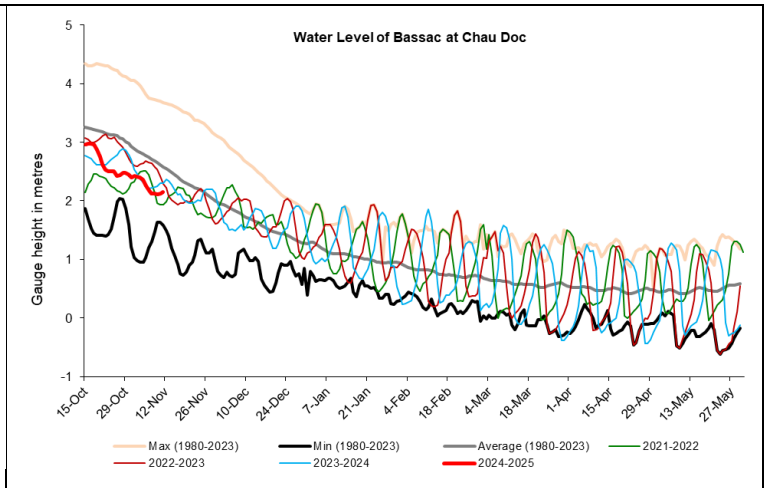
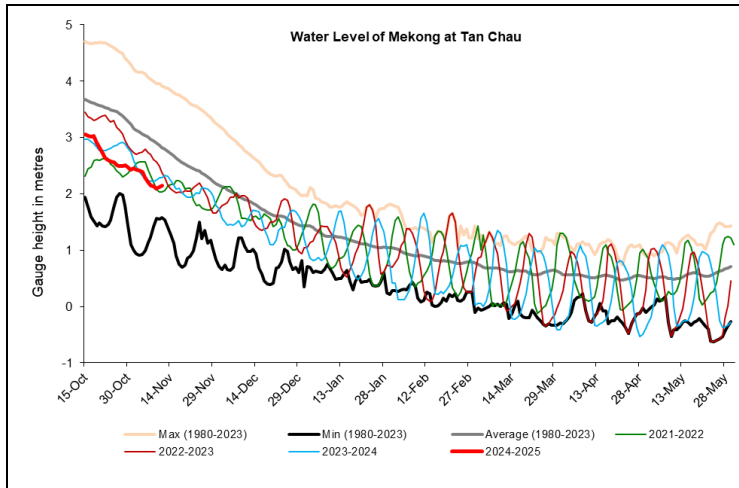
In the next three-month from December 2024 to January 2025, the forecast indicates that no significant drought conditions are expected across the entire LMB during this period. However, in November and December 2024, the upper part of the LMB, including Xayabouly and Luang Namtha provinces, is anticipated to experience moderate drought conditions.

Annex A: Weekly water level monitoring at 22 key stations









Annex B: Tables for weekly updated water levels and rainfall at the Key Stations

Table A1: Weekly observed water levels

2024	Jinghong	Chiang Saen	Luang Prabang	Chiang Khan	Vientiane	Nongkhai	Paksane	Nakhon Phanom	Thakhek	Mukdahan	Savannakhet	Khong Chiam	Pakse	Stung Treng	Kratie	Kompong Cham	Phnom Penh (Bassac)	Phnom Penh Port	Koh Khel	Neak Luong	Prek Kdam	Tan Chau	Chau Doc
12/11/2024	535.33	3.76	9.68	6.58	3.85	3.33	4.11	3.05	4.28	3.20	1.72	3.97	2.74	4.12	10.56	6.20	5.25	4.14	4.85	3.96	5.38	2.16	2.20
13/11/2024	535.28	3.15	9.66	7.26	3.87	3.35	4.19	3.03	4.26	3.14	1.60	3.90	2.75	4.01	10.48	6.06	5.06	4.02	4.73	3.82	5.28	2.20	2.24
14/11/2024	535.28	2.84	9.64	7.52	3.90	3.78	4.26	3.03	4.27	3.12	1.59	3.79	2.70	3.80	10.27	5.96	5.00	3.98	4.66	3.75	5.24	2.29	2.38
15/11/2024	535.31	2.66	9.70	7.24	3.96	4.20	4.57	3.10	4.38	3.13	1.61	3.75	2.68	3.66	9.93	5.78	4.88	3.87	4.57	3.66	5.14	2.32	2.43
16/11/2024	535.25	2.62	9.74	6.80	3.93	4.03	4.81	3.23	4.45	3.19	1.66	3.72	2.65	3.66	9.64	5.56	4.77	3.75	4.44	3.46	5.04	2.28	2.43
17/11/2024	535.48	2.61	9.70	6.36	3.86	3.70	4.81	3.40	4.60	3.29	1.78	3.75	2.63	3.64	9.56	5.38	4.66	3.59	4.32	3.32	4.95	2.22	2.39
18/11/2024	536.08	2.54	9.74	6.36	3.77	3.27	4.50	3.45	4.66	3.42	1.89	3.80	2.63	3.59	9.50	5.30	4.55	3.40	4.25	3.26	4.86	2.15	2.29

Table A2: Weekly observed rainfall

2024	Jinghong	Chiang Saen	Luang Prabang	Chiang Khan	Vientiane	Nongkhai	Paksane	Nakhon Phanom	Thakhek	Mukdahan	Savannakhet	Khong Chiam	Pakse	Stung Treng	Kratie	Kompong Cham	Phnom Penh (Bassac)	Phnom Penh Port	Koh Khel	Neak Luong	Prek Kdam	Tan Chau	Chau Doc
12/11/2024	0.5	0	0	0	0	0	0	0	0	0	0	0	0	0	0	0	0	0	0	0	0	0	0
13/11/2024	0	0	0	0	0	0	0	0	0	0	0	0	0	0	0	0	0	0	0	0	0	0	0
14/11/2024	0	0	0	0	0	0	0	0	0	0	0	0	0	0	0	0	0	0	0	0	0	4.6	1
15/11/2024	0	0	0	0	0	0	0	0	0	0	0	0	0	0	0	0	0	0	0	0	0	0	0
16/11/2024	0	0	0	0	0	0	0	0	0	0	0	0	0	0	0	0	0	0	0	0	0	0	0
17/11/2024	0	0	0	0	0	0	0	0	0	0	0	0	0	0	0	0	0	0	0	0	0	0	0
18/11/2024	0	0	0	0	0	0	0	0	0	0	0	0	0	0	0	0	0	0	0	0	0	0	0
Sum	0.5	0.0	0.0	0.0	0.0	0.0	0.0	0.0	0.0	0.0	0.0	0.0	0.0	0.0	0.0	0.0	0.0	0.0	0.0	0.0	0.0	4.6	1.0



Mekong River Commission Secretariat

P. O. Box 6101, 184 Fa Ngoum Road, Unit 18 Ban Sithane Neua, Sikhottabong District, Vientiane 01000, Lao PDR
Tel: +856 21 263 263. Fax: +856 21 263 264 www.mrcmekong.org
© Mekong River Commission 2024