



Mekong River Commission

Weekly Wet Season Situation Report in the Lower Mekong River Basin 22 – 28 October 2024

Prepared by
The Regional Flood and Drought Management Centre
29 October 2024

The MRC is funded by contributions from its Member Countries and Development Partners, including Australia, Belgium, the European Union, Finland, France, Germany, Japan, Luxembourg, the Netherlands, Sweden, Switzerland, the United States and the World Bank.

Copyright © Mekong River Commission, 2024

First published (2020)

Some rights reserved.

This work is the product of the Mekong River Commission Secretariat. While all efforts are made to present accurate information, the Secretariat does not guarantee the accuracy of the data included in this work. The boundaries, colours, denomination, and other information shown on any map in this work do not imply any judgement on the part of the MRC concerning the legal status of any territory or the endorsement or acceptance of such boundaries.

Nothing herein shall constitute or be considered to be a limitation upon or waiver of the privileges and immunities of the MRC, all of which are specifically reserved.

This publication may be reproduced in whole or in part and in any form for educational or non-profit purposes without special permission from the copyright holder, provided acknowledgement of the source is made and notification is sent to the MRC. The MRC would appreciate receiving a copy of any publication that uses this publication as a source. This publication cannot be used for sale or for any other commercial purpose whatsoever without permission in writing from the MRC.

Title: Weekly wet season situation report in the Lower Mekong River Basin for 22 – 28 October 2024.

ISSN: 1728-3248

Keywords: Monitoring/forecasting/weather/the Mekong/the Tonle Sap Lake

For bibliographic purposes, this volume may be cited as:

Mekong River Commission. (2024). *Weekly wet season situation report in the Lower Mekong River Basin for 22 – 28 October 2024*. Vientiane: MRC Secretariat.

Information on MRC publications and digital products can be found at
<http://www.mrcmekong.org/publications/>

All queries on rights and licenses should be addressed to:

Mekong River Commission

Documentation and Learning Centre

184 Fa Ngoum Road, Unit 18, Ban Sithane Neua, Sikhottabong District, Vientiane 01000, Lao PDR

Telephone: +856-21 263 263 | E-mail: mrccs@mrcmekong.org | www.mrcmekong.org

Content

Content.....	i
List of Figures.....	ii
List of Tables.....	iii
Key Messages	iv
1 Introduction.....	22
2 General Weather Patterns	23
3. Rainfall and Water Level Monitoring	24
3.1. <i>Rainfall monitoring</i>	24
3.2. <i>Water level monitoring</i>	26
4. Flash Flood in the Lower Mekong Basin.....	30
5. Drought Monitoring in the Lower Mekong Basin	31
5.2. <i>Weekly drought monitoring from 22 – 28 October 2024</i>	32
6 Weather and Water Level Forecast and Flash Flood information	34
6.1 <i>Rainfall forecast</i>	34
6.2 <i>Water level forecast</i>	36
6.3 <i>Flash Flood Information</i>	38
6.4 <i>Drought forecast</i>	39
7 Summary and Possible Implications.....	39
7.1. <i>Rainfall and its forecast</i>	39
7.2. <i>Water level and its forecast</i>	40
7.3. <i>Flash flood and its trends</i>	40
7.4. <i>Drought condition and its forecast</i>	40
Annex A: Weekly water level monitoring at the 22 key stations.....	22
Annex B: Tables for weekly updated water levels and rainfall at the Key Stations.....	25
Annex C: Performance of the weekly flood forecasting	29

List of Figures

Figure 1: Weather conditions over the LMB from 29 October – 04 November	23
Figure 2: Outlook of wet and dry conditions over the Asian countries by ASMC.....	24
Figure 3: One tropical storm risk observed on 30 October 2024	24
Figure 4: Weekly rainfall distribution over the LMB during 22 – 28 October 2024.....	25
Figure 5: The key stations along LMB for river flood forecasting	27
Figure 6. Water level at the Jinghong hydrological station up to 28 October 2024.....	28
Figure 7: Seasonal change of inflows and outflows of Tonle Sap Lake.....	29
Figure 8. The seasonal change in monthly volume of Tonle Sap Lake.....	29
Figure 9. Flash Flood risk for the next 12-hr and 24-hr on 27 October	31
Figure 10: Weekly standardized precipitation index from 22– 28 October	32
Figure 11: Weekly Index of Soil Water Fraction from 22 – 28 October.....	33
Figure 12: Weekly Combined Drought Index from 22 – 28 October.	34
Figure 13: Accumulated rainfall forecast from CHIRPS-GEFS (29 October – 02 November 2024).....	35
Figure 14. Monthly forecasts of combined drought indicator for a) November, b) December 2024 and c) January 2025.	39

List of Tables

Table 1. The monthly change in the flow volume of Tonle Sap Lake.	30
Table 2. Detected moderate to high-risk flash flood in Lao PDR on 27 October.....	30
Table 3. River Monitoring and Forecasting Bulletin.....	37

Key Messages

Key messages for this weekly report are presented below.

Rainfall monitoring and forecast

- In the period of 22 – 28 October 2024, light to moderate rainfall has been observed over the LMB. Especially, heavy rain occurred in some areas in Kompong Speu, Pailin, Mung Russey, Mounng Tchepone, Pakse, Veun Khen, Tala Boriwat, Bovel, Sekong, Sesan, Dak To, Pleiku, Kon Tum.
- From 29 October – 04 November 2024, light to moderate rain is expected over the Lower Mekong Basin.

Water level monitoring and forecast

- At 22 key monitoring stations along the Mekong mainstream from 22 – 28 October 2024, water levels at all stations along the Mekong mainstream have decreased except for Luang Prabang and Stung Treng stations. However, water levels are in normal conditions. The total accumulated volume of the reverse flow to Tonle Sap Lake remains 25.49 Km³. This value has remained constant since 01 October 2024
- In the period of 29 October – 02 November 2024, water levels at almost all stations along Mekong mainstream from are likely expected to drop except for Stung Treng and Kratie stations.

Drought condition and forecast

- From 22 – 28 October 2024, the LMB is experiencing normal to wet conditions, except for some areas in the northeastern of Thailand and the western part of Mekong Delta. The observed drought was caused primarily by meteorological indicator.
- From 29 October – 04 November, the LMB is likely at normal conditions. No drought is forecasted for the whole region.

1 Introduction

This Weekly Wet Season Situation Report presents a preliminary analysis of the weekly hydrological situation in the Lower Mekong River Basin (LMB) for **22 – 28 October 2024**. The trend and outlook for water levels are also presented.

This analysis is based on the daily hydro-meteorological data provided by the Mekong River Commission (MRC) Member Countries – Cambodia, Lao PDR, Thailand, and Viet Nam – and on satellite data. The water level indicated in this report refers to an above zero gauge of each station.

The report covers the following topics that are updated weekly:

- General weather patterns, including rainfall patterns over the LMB.
- Water levels in the LMB, including in the Tonle Sap Lake.
- Flash flood and drought situation in the LMB.
- Weather, water level and flash flood forecast, and
- Possible implications.

Mekong River water levels are updated daily and can be accessed from:

<http://ffw.mrcmekong.org/bulletin.php>.

Drought monitoring and forecasting information is available at:

<http://droughtforecast.mrcmekong.org>

Flash flood information is accessible at: <http://ffw.mrcmekong.org/ffg.php>

2 General Weather Patterns

During last week, heavy rainfall occurred in some areas in the central and southern Laos especially the areas bordering Lao PDR and Viet Nam, and the central highland of Viet Nam due to the tropical storm Trami's influence during 27 to 28 October.

Next week from 29 October – 04 November, the weak high-pressure system covers the upper and the central part of the Lower Mekong Basin. Light to moderate rain is expected over the region during this period.

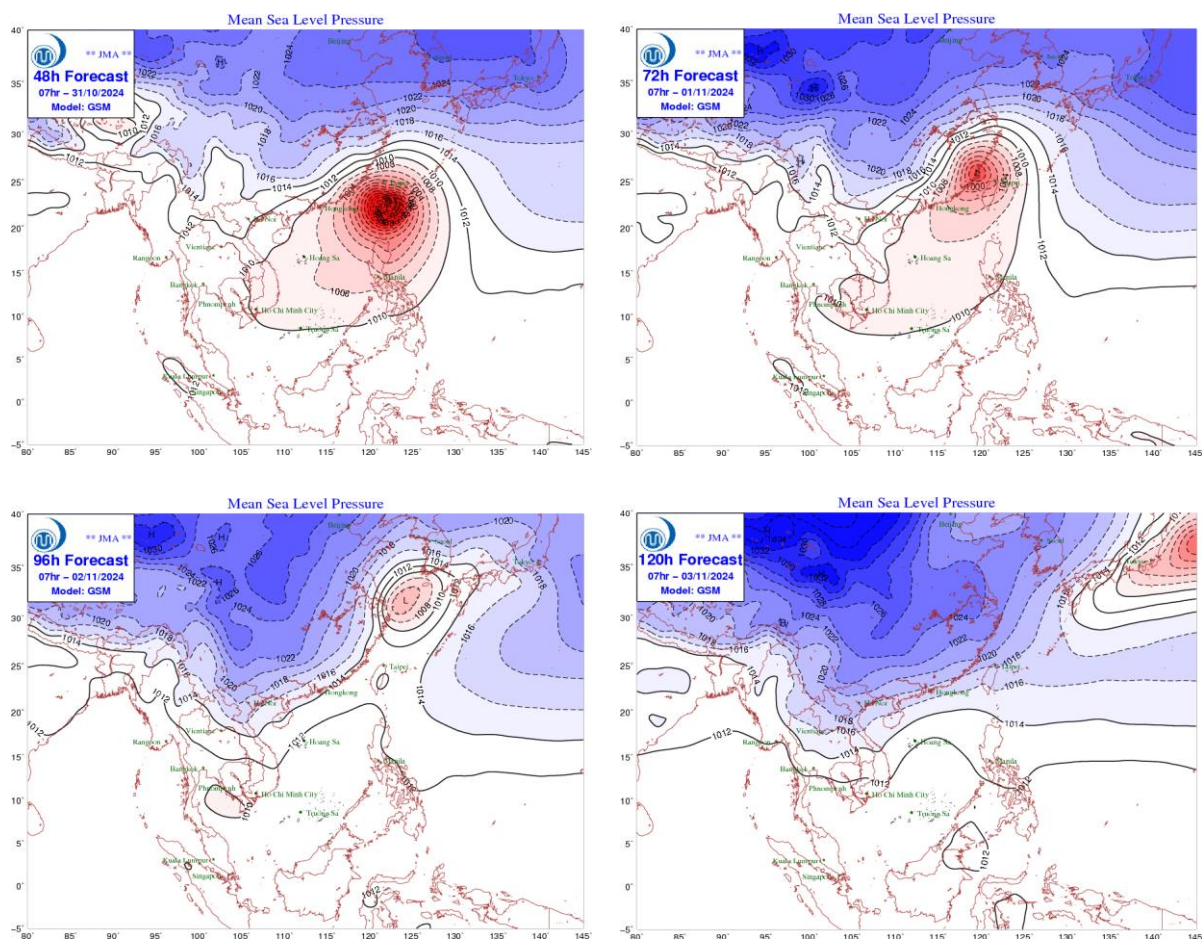


Figure 1: Weather conditions over the LMB from 29 October – 04 November

According to the ASEAN Specialised Meteorological Centre (ASMC, <http://asmc.asean.org/home/>), the subseasonal weather outlook (14 – 27 October 2024) indicates that drier conditions is expected for the entire the LMB, while warmer conditions are predicted central to upper parts. **Figure 2** shows the outlook of weather condition from 14 – 27 October 2024 in Southeast Asia based on results from the NCEP model (National Centres for Environmental Prediction).

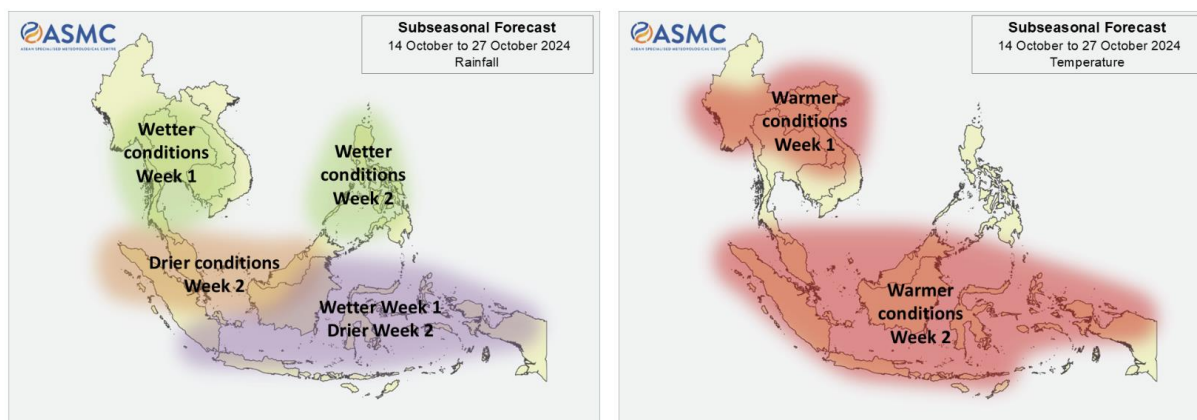


Figure 2: Outlook of wet and dry conditions over the Asian countries by ASMC.

Based on the tropical storm risk (TS) (https://www.jma.go.jp/jma/jma-eng/jma-center/rsmc-hp-pub-eg/RSMC_HP.htm), there is one active tropical storm at NW pacific system as of 28 October 2024 as displayed in **Figure 3**.

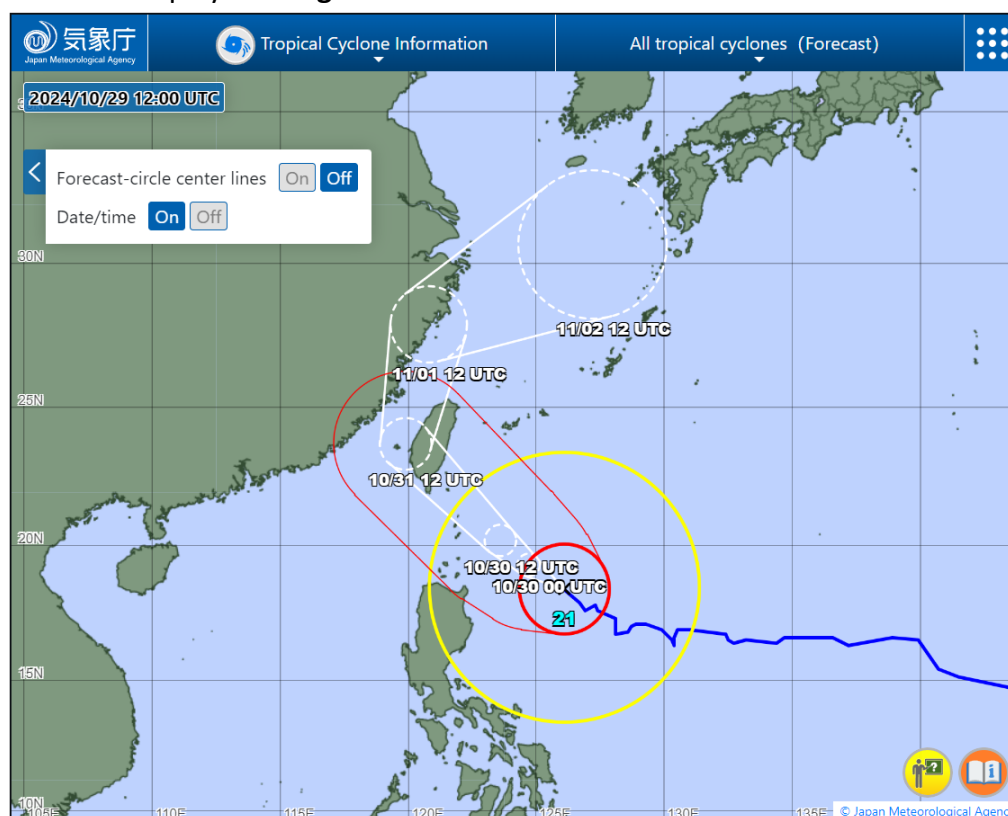


Figure 3: One tropical storm risk observed on 30 October 2024

3. Rainfall and Water Level Monitoring

3.1. Rainfall monitoring

The weekly accumulated rainfall is based on the observed data provided by the MRC Member Countries – Cambodia, Lao PDR, Thailand, and Viet Nam – from 22 – 28 October 2024 (**Figure**

4), light to moderate rainfall has been observed over the LMB. Especially, heavy rain occurred in some areas in Kompong Speu, Pailin, Mung Russey, Moung Tchepone, Pakse, Veun Khen, Tala Boriwat, Bovel, Sekong, Sesan, Dak To, Pleiku, Kon Tum.

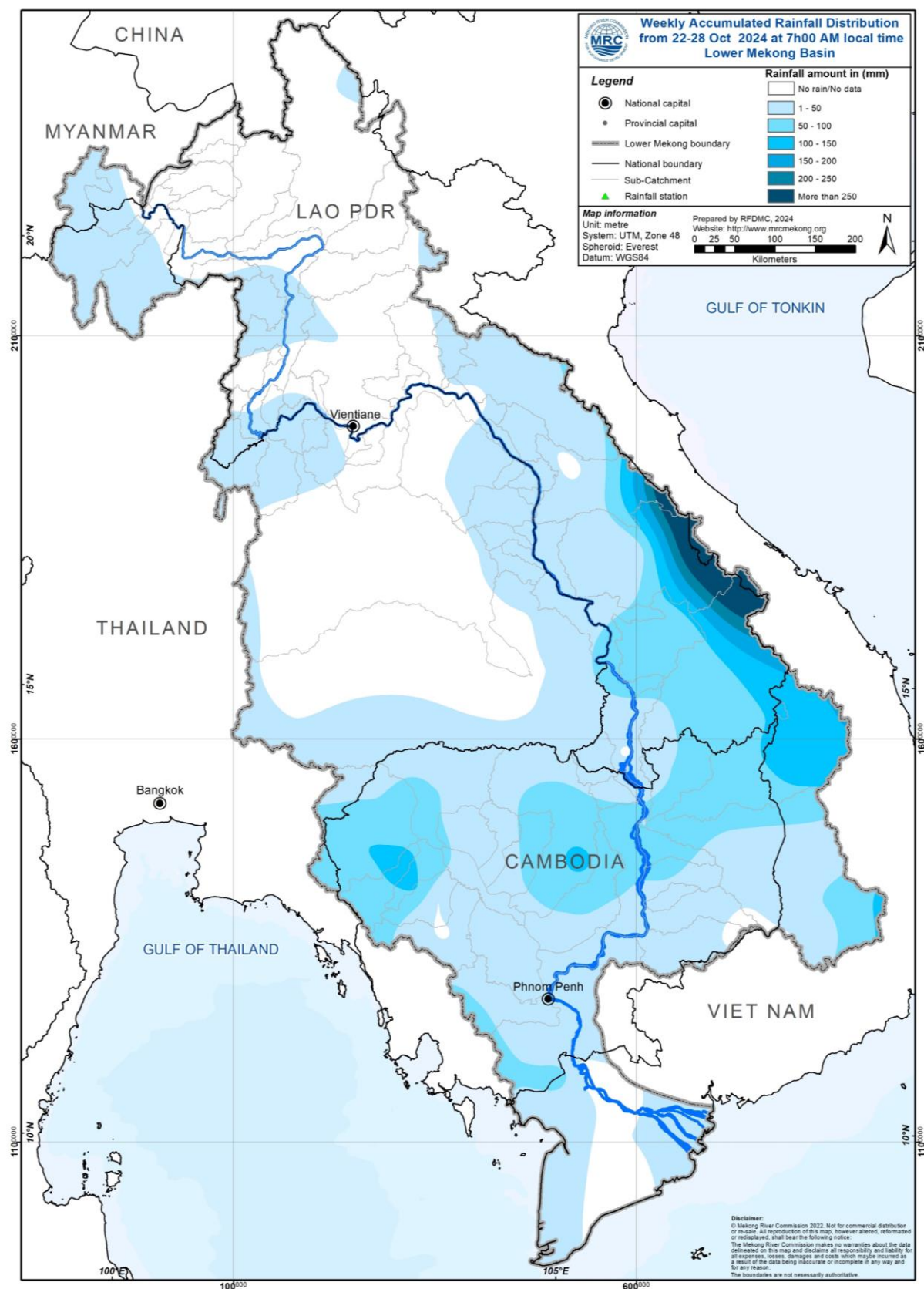


Figure 4: Weekly rainfall distribution over the LMB during 22 – 28 October 2024

3.2. Water level monitoring

The hydrological regimes of the Mekong mainstream are illustrated by recorded water levels and flows at key mainstream stations: at Chiang Saen to capture mainstream flows entering from the Upper Mekong Basin (UMB); at Vientiane to present flows generated by climate conditions in the upper part of the LMB; at Pakse to investigate flows influenced by inflows from the larger Mekong tributaries; at Kratie in Cambodia to capture overall flows of the Mekong Basin; and at Viet Nam's Tan Chau and Chau Doc to monitor flows to the Delta.

The key stations along the LMB and their respective model application for River Flood Forecasting during the wet season from June to October and River Monitoring during the dry season from November to May are presented in **Figure 5**. The hydrograph for each key station is available from the MRC's River Flood Forecasting: <http://ffw.mrcmekong.org/overview.php>.

During 22 – 28 October 2024, the observed water level (WL) at Jinghong hydrological station¹, was almost constant and ranges between 536.08 m and 535.44 m, which are corresponding to the outflow between 1,430.00 m³/s to 964.00 m³/s (recorded on 7:00 am), respectively (**Figure 6**). The water level in Chiang Saen Station decreased from 3.15 m to 3.06 m. At the same period, the water level in Luang Prabang station also decreased with an approximate value of -0.14 m from 10.34 m to 10.20 m as compared to the previous week. Water levels at Chiang Khan, Vientiane and Nongkhai have also decreased from 7.97 m to 7.33 m, 4.76 m to 4.18 m, and 4.96 m to 4.23 m, respectively. Moving downward at Paksane, Nakhon Phanom, Thakhek, Mukdahan, Savannakhet, Khong Chiam and Pakse stations, water levels have also been decreasing from 6.24 m to 5.36 m, 5.40 m to 4.31 m, 6.53 m to 5.47 m, 5.20 m to 4.32 m, 3.64 m to 2.74 m, 6.50 m to 5.56 m and 4.92 m to 4.14 m, respectively.

At Stung Treng, Kratie, and Kampong Cham, Phnom Penh Bassac, Phnom Penh Port, Koh Khel Neak Luong and Preak Kdam stations water levels have also decreased from 5.82 m to 5.11 m, 14.33 m to 12.47 m, 9.18 m to 7.74 m, 7.23 m to 6.3 m, 6.04 m to 5.19 m, 6.42 m to 5.80 m, 5.28 m to 4.62 m, 6.81 m to 6.26 m, respectively.

From to the previous week, the water levels from 22 to 28 October 2024 at Viet Nam's Tan Chau and Chau Doc, water levels have fluctuated from 2.72 m to 2.49 m and from 2.62 m to 2.48 m, respectively.

¹ Near-real time data of hydro-meteorological monitoring at the Jinghong hydrological station is available at <https://monitoring.mrcmekong.org/>

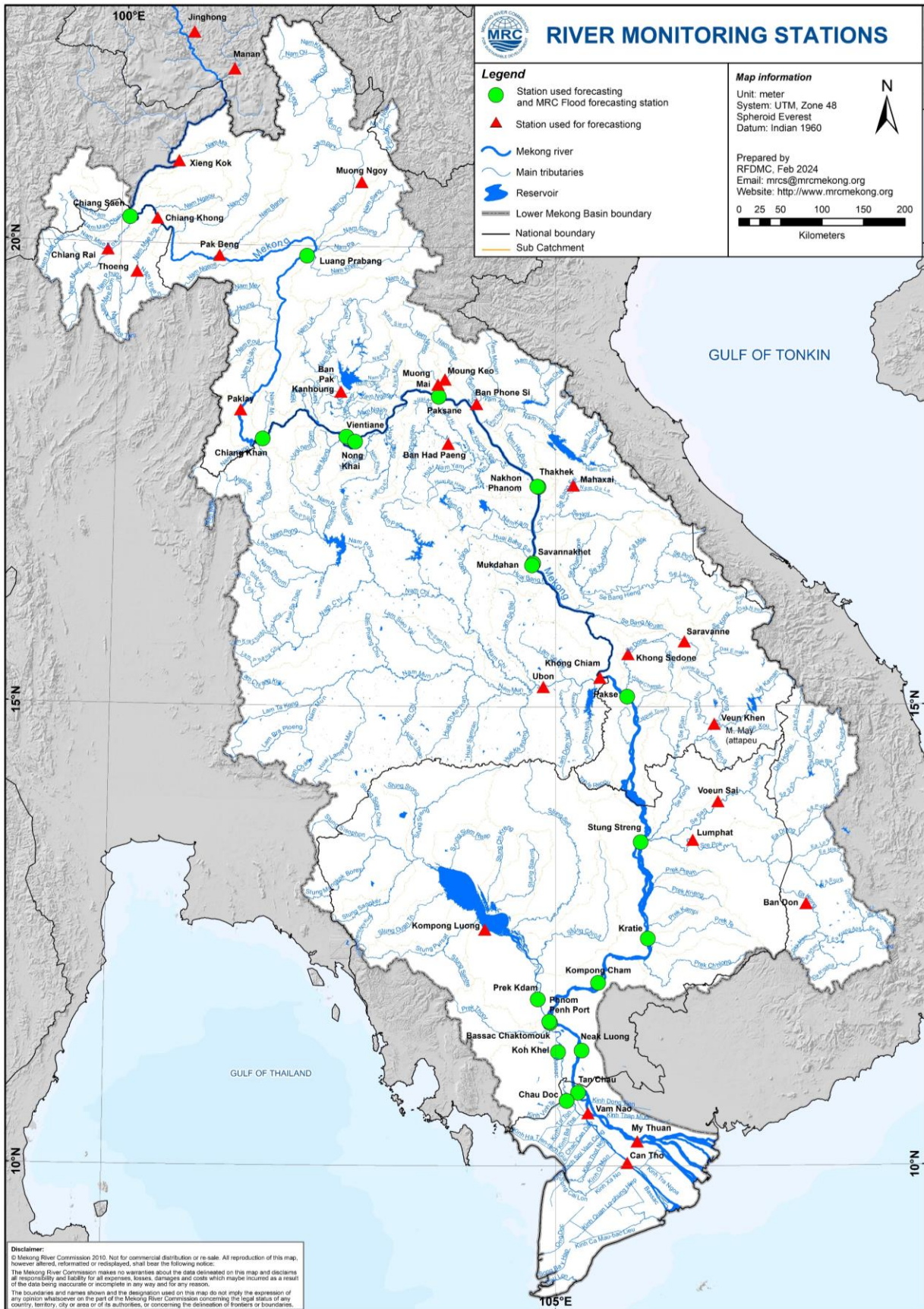


Figure 5: The key stations along LMB for river flood forecasting

The water levels in key monitoring stations on 28 October, water levels at all stations along Mekong mainstream are in normal conditions with decreasing trends. Moreover, all stations with available PMFM (Article 6C) thresholds are in normal conditions. The graphics of water level monitoring in all key stations are presented in **Annex A** and the weekly water levels and rainfall at each key station are summarised in **Annex B**.

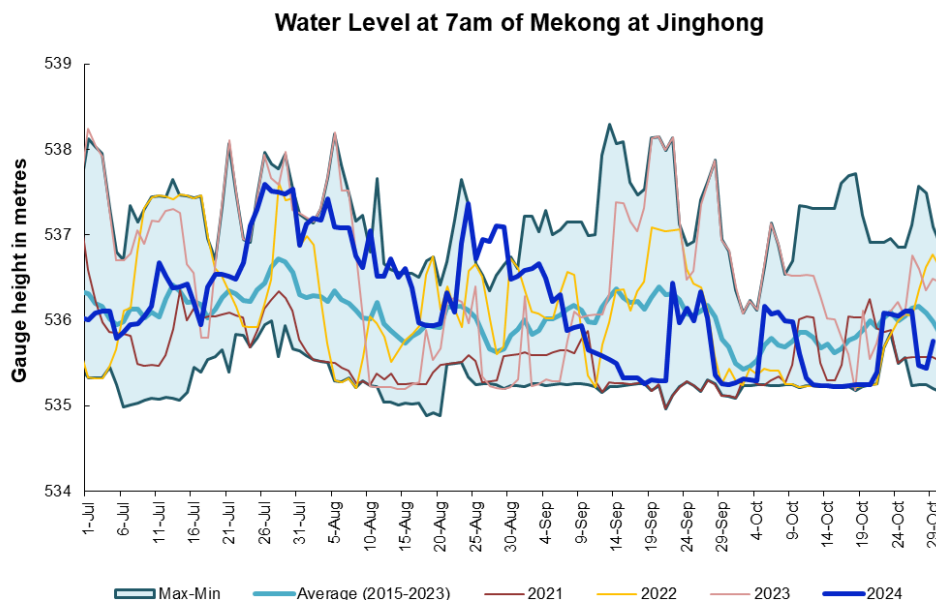


Figure 6. Water level at the Jinghong hydrological station up to 28 October 2024.

At the end of the wet season, when water levels along the Mekong River subside, the outflow of the Tonle Sap Lake (TSL) returns to the Mekong River and then to the Delta. This phenomenon normally takes place between September and October. Based on flow observation at Prek Kdam monitoring station, the inflow/reverse of the Tonle Sap Lake took place since 29 June 2024.

The outflow flow is calculated based on a formula of rating-curves using by difference of water levels at Kompong Luong and Phnom Penh Port stations for slop and Prek Kdam as cross-section of the Lake. The formula of flow is as follows:

$$Flow = WL_{Prek\ Kdam}^{1.2} \times \sqrt{|WL_{Phnom\ Penh\ Port} - WL_{Kampong\ Luong}|}$$

Where, WL is water level in m (msl).

The seasonal changes of the inflow/reverse flow and the outflow of the TSL at Prek Kdam in comparison with the flows of 2020, 2021 and 2022, 2023 and their LTA level (1997-2023) are illustrated in **Figure 7**. The reversed flow to the lake has accumulated volume of 25.49 Km³. This value has remained constant since 01 October 2024. This means that water have flowed out of the Tonle Sap Lake to the Mekong Delta.

The seasonal changes in monthly flow volumes up to 28 October 2024 for the TSL compared with that in 2020, 2021, 2022, 2023 and their LTAs, and the fluctuation levels (1997–2023) are

presented in **Table 8**. The mean monthly water volume of the Tonle Sap Lake in September 2024 is lower than its LTA (about 78.39 %), 2023 but higher than 2019, 2020, 2021 and 2022 during the same period (**Figure 8 and Table 1**). However, updated until 28 October 2024, the volume of the lake is approximately 83.31% of its LTA in October.

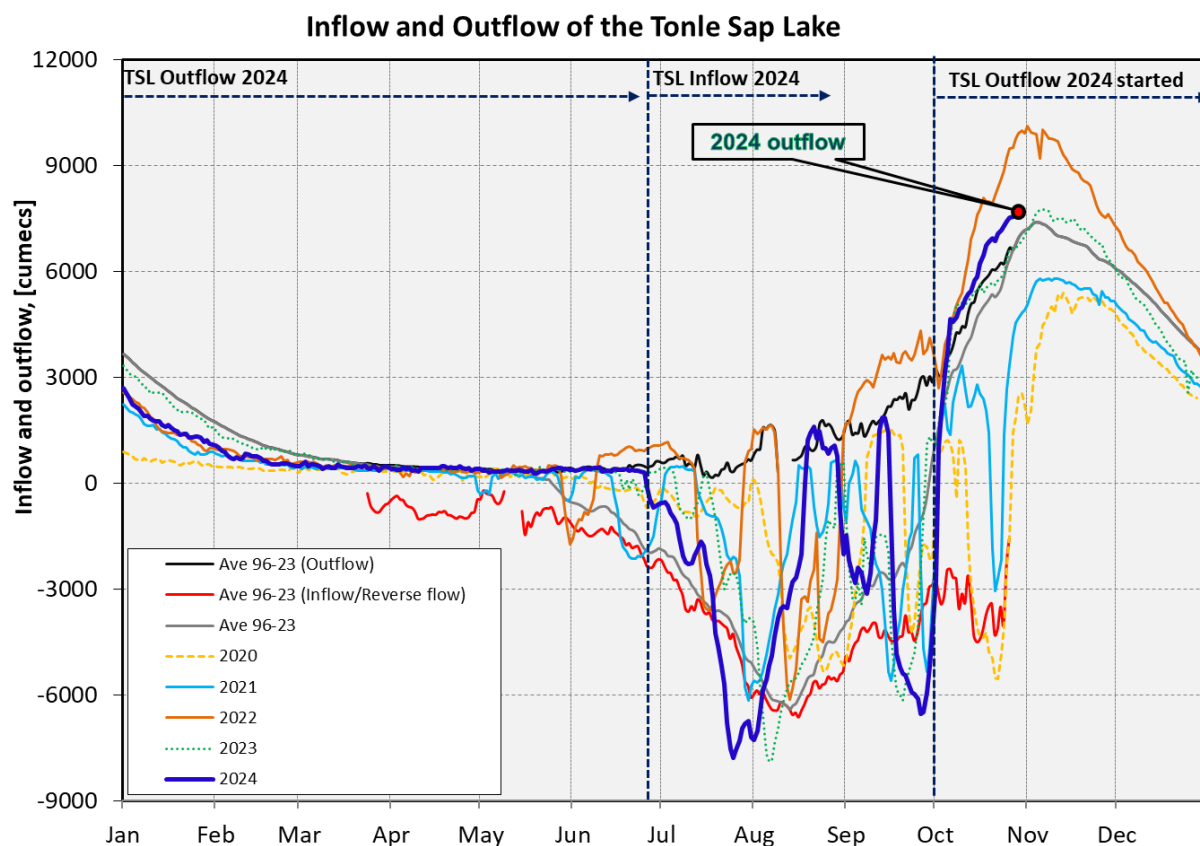


Figure 7: Seasonal change of inflows and outflows of Tonle Sap Lake.

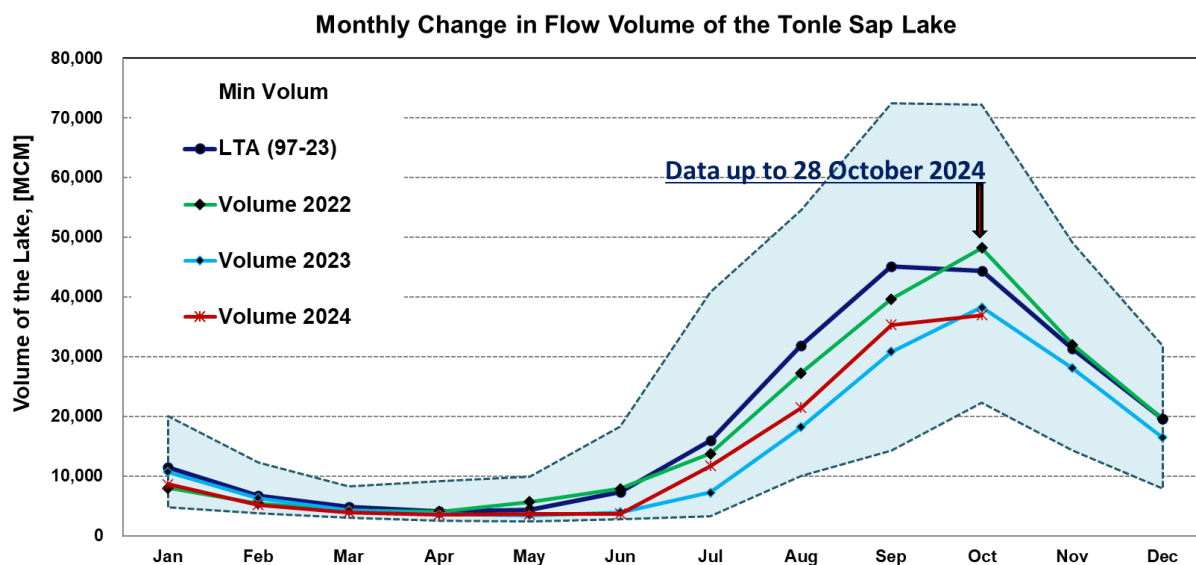


Figure 8. The seasonal change in monthly volume of Tonle Sap Lake.

Table 1. The monthly change in the flow volume of Tonle Sap Lake.

Month	LTA (97-22) [MCM]	Max Volume [MCM]	Min Volume [MCM]	Volume 2019 [MCM]	Volume 2020 [MCM]	Volume 2021 [MCM]	Volume 2022 [MCM]	Volume 2023 [MCM]	Volume 2024 [MCM]	Volume in 2024 [%], compared with its LTA
Jan	11487.13	20039.88	4796.69	7998.69	4796.69	7405.81	7998.69	10700.62	8610.88	74.96
Feb	6697.79	12266.87	3757.30	4954.90	3757.30	4671.15	5405.65	6309.00	5211.05	77.80
Mar	4822.51	8340.62	3030.40	3936.30	3259.79	4147.46	4330.50	4299.86	3936.30	81.62
Apr	4033.80	9203.09	2552.38	3317.61	2635.83	3259.79	4026.48	3609.52	3580.11	88.75
May	4376.15	9938.04	2441.69	3317.61	2469.30	3462.96	5668.52	3404.68	3609.52	82.48
Jun	7357.50	18344.65	2775.77	3580.11	2832.04	4765.22	7886.07	3936.30	3698.04	50.26
Jul	16001.18	40825.01	3230.96	4269.27	3230.96	7333.01	13751.91	7260.51	11671.87	72.94
Aug	31847.52	54529.13	10021.39	12266.87	10021.39	12453.19	27226.87	18168.63	21440.19	67.32
Sep	45088.00	72427.44	14251.59	35070.22	14251.59	22430.63	39624.67	30811.08	35343.56	78.39
Oct	44317.53	72124.19	22296.87	25074.27	28782.41	32331.33	48230.13	38255.90	36920.65	83.31
Nov	31391.74	49030.83	14302.12	14302.12	23867.31	25218.90	31989.11	28075.12		
Dec	19550.90	31734.10	7886.07	7886.07	13900.73	15599.94	19545.75	16466.19		
	Critical situation: lower than long-term minimum values (LTMIN)									
	Normal condition: within the range of long-term min (LTMIN) and max (LTMAX) values									
	Low volume situation: lower than long-term average (LTA)									
Unit: Million Cubic Meter (1 MCM= 0.001 Km ³)										

Remarks: the monthly volume of Tonle Sap Lake in 2024 is updated until 28 October 2024.

4. Flash Flood in the Lower Mekong Basin

During the weekly monitoring period from 22 – 28 October 2024, the LMB received light to heavy rain in some areas over the LMB.

According to the Southeast Asian Flash Flood Guidance System (SEAFFGS) and analysis, flash flood guidance was detected moderate to high level in the next 1, 3, and 6 hours in some areas in Cambodia and Viet Nam, the reporting period as shown in [Figure 14](#) and [Table 2](#).

Table 2. Detected moderate to high-risk flash flood in Lao PDR on 27 October

FLASH FLOOD GUIDANCE IN THE LOWER MEKONG BASIN								
In the next 1hrs			In the next 3hrs			In the next 6hrs		
Provinces	Districts	Level	Provinces	Districts	Level	Provinces	Districts	Level
Kampong Cham	Stueng Trang	High	Kampong Cham	Stueng Trang	High	Kampong Cham	Stueng Trang	High
Kratie	Preaek Prasab	Moderate	Mondul Kiri	Kaoh Nheaek	Moderate	Mondul Kiri	Kaoh Nheaek	Moderate
Mondul Kiri	Kaoh Nheaek	Moderate	Mondul Kiri	Ou Reang	Moderate	Mondul Kiri	Ou Reang	Moderate
Mondul Kiri	Ou Reang	High	Mondul Kiri	Pechr Chenda	Moderate	Mondul Kiri	Pechr Chenda	Moderate
Mondul Kiri	Pechr Chenda	High	Ratana Kiri	Koun Mom	Moderate	Ratana Kiri	Koun Mom	Moderate
Mondul Kiri	Saen Monourom	Moderate	Ratana Kiri	Ta Veang	High	Ratana Kiri	Ta Veang	High

FLASH FLOOD GUIDANCE IN THE LOWER MEKONG BASIN								
In the next 1hrs			In the next 3hrs			In the next 6hrs		
Provinces	Districts	Level	Provinces	Districts	Level	Provinces	Districts	Level
Ratana Kiri	Koun Mom	High	Stung Treng	Sesan	Moderate	Stung Treng	Sesan	Moderate
Ratana Kiri	Ou Chum	Moderate	Stung Treng	Siem Pang	High	Stung Treng	Siem Pang	High
Ratana Kiri	Ta Veang	High	Stung Treng	Thala Barivat	Moderate	Stung Treng	Thala Barivat	Moderate
Ratana Kiri	Veun Sai	Moderate						
Stung Treng	Sesan	High						
Stung Treng	Siem Pang	High						
Stung Treng	Thala Barivat	Moderate						

FLASH FLOOD GUIDANCE IN THE LOWER MEKONG BASIN								
In the next 1hrs			In the next 3hrs			In the next 6hrs		
Provinces	Districts	Level	Provinces	Districts	Level	Provinces	Districts	Level
Dak Lak	Buon Don	Moderate	Gia Lai	Duc Co	High	Gia Lai	Duc Co	High
Dak Lak	Cu Jut	Moderate						
Dak Lak	Cu M'Gar	Moderate						
Dak Lak	Dak Mil	Moderate						
Dak Lak	Ea Kar	Moderate						
Gia Lai	Duc Co	High						
Gia Lai	Mang Yang	Moderate						
Kon Tum	Dak Glei	Moderate						

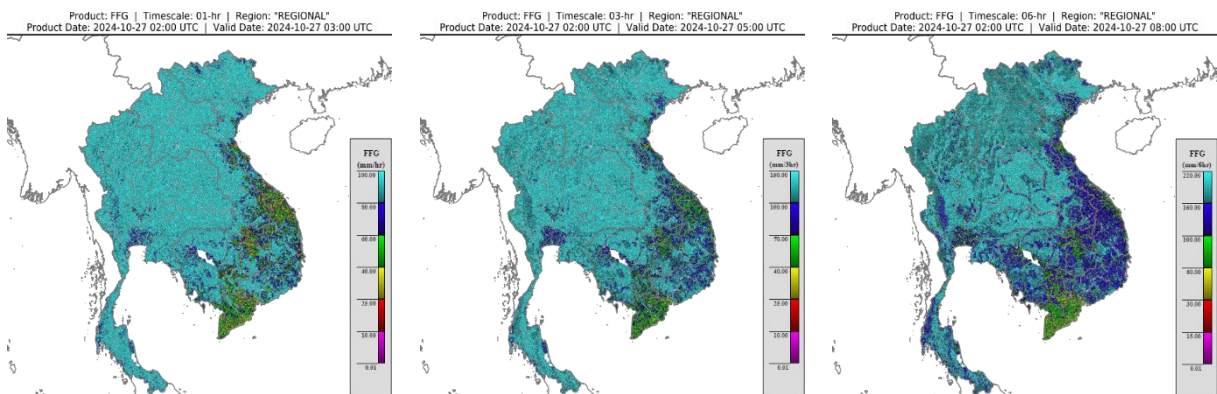


Figure 9. Flash Flood risk for the next 12-hr and 24-hr on 27 October

5. Drought Monitoring in the Lower Mekong Basin

5.2. Weekly drought monitoring from 22 – 28 October 2024

Drought monitoring data for 2024 are available from Monday to Sunday every week; thus, the reporting period is normally delayed by one day compared to Flood and Flash Flood reports. We adopt the Index of Soil Water Fraction (ISWF) data obtained from FFGS to represent soil moisture of agricultural indicator for both dry and wet seasons.

- **Weekly Standardised Precipitation Index (SPI1)**

As indicated in **Figure 10** below, during 22 – 28 October, the LMB is experiencing the LMB was facing normal to wet conditions, except some areas in the northeastern part of Thailand and the western part of Mekong Delta.

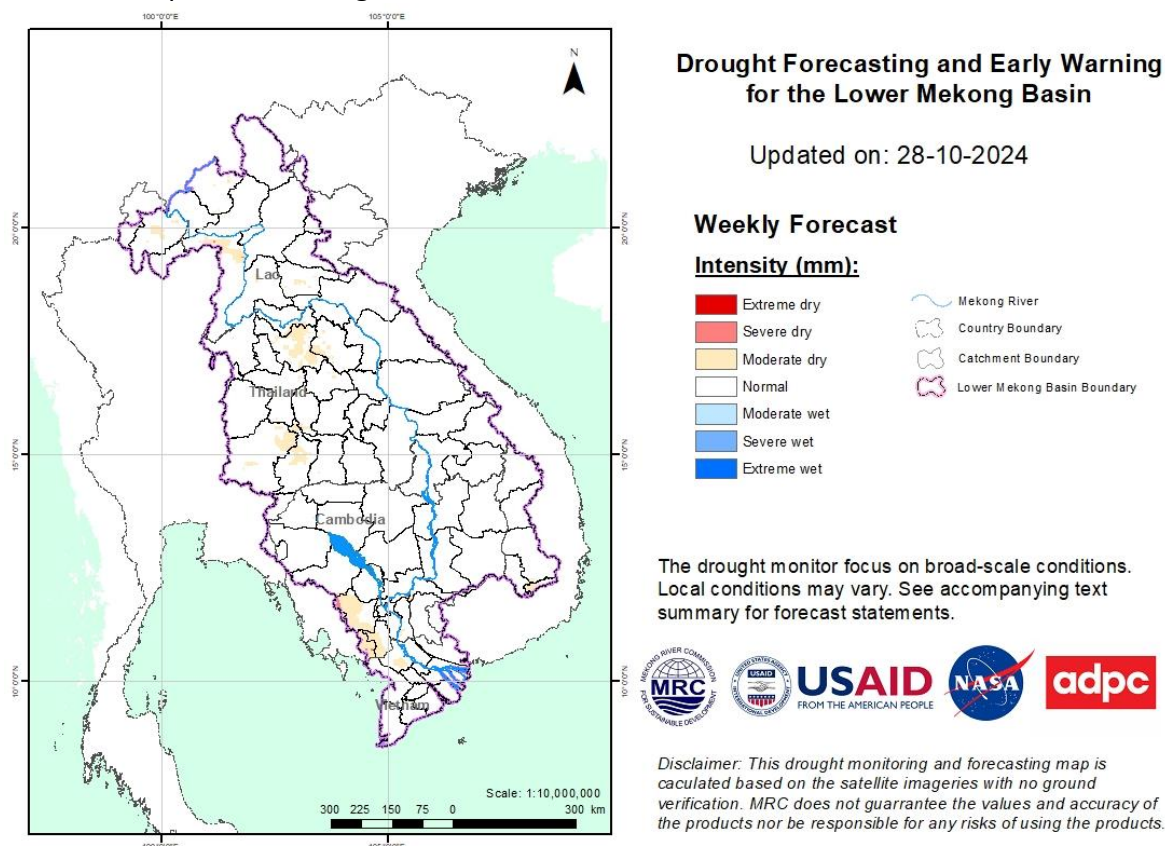


Figure 10: Weekly standardized precipitation index from 22– 28 October

- **Weekly Index of Soil Water Fraction (ISWF)**

The LMB was facing a was facing a modearte to servere conditions in some areas in the upper to central part of Lao PDR and the northeastern part of Thailand during the monitoring week from 22 – 28 October 2024, see **Figure 10**.

Note: S: short-term drought, less than 1 months; L: long-term drought, more than 1 month

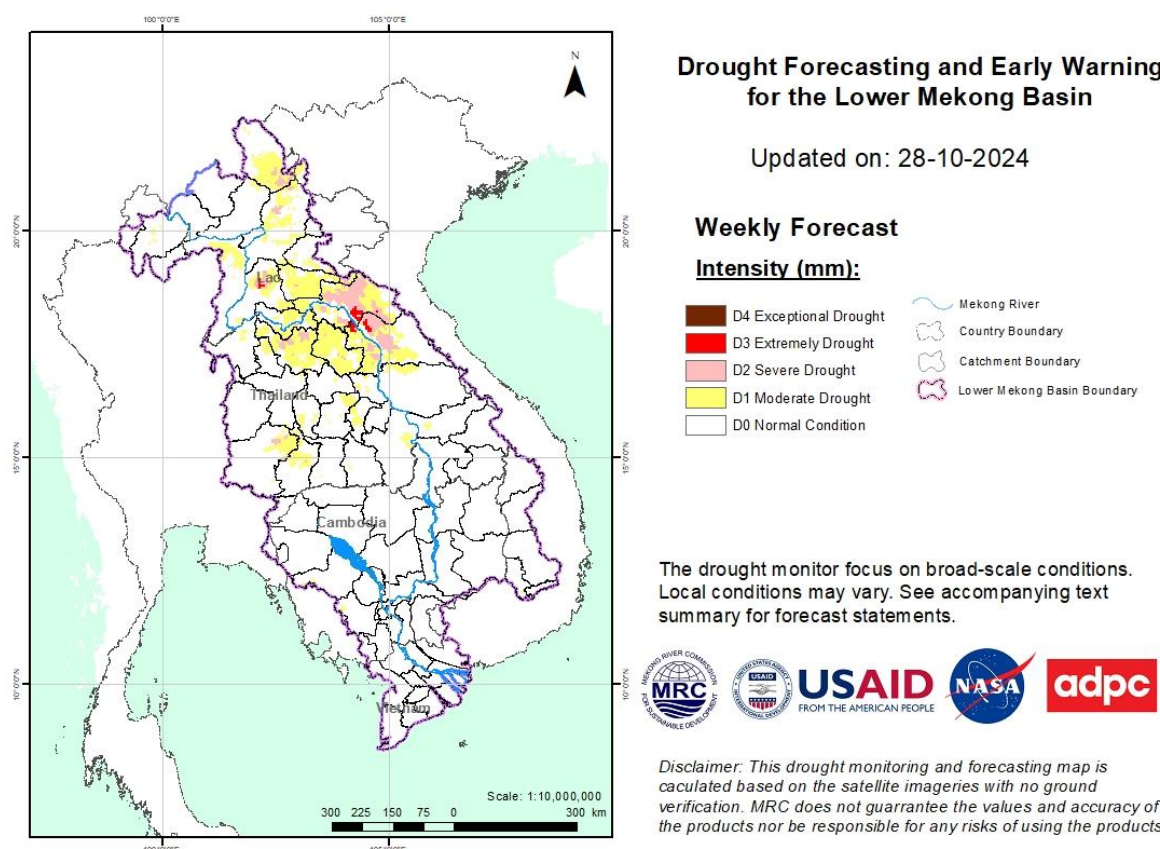


Figure 12: Weekly Combined Drought Index from 22 – 28 October.

More information on Drought Forecasting and Early Warning (DFEW) as well as the explanation is available here: <http://droughtforecast.mrcmekong.org/templates/view/our-product>. DFEW provides not only weekly monitoring and forecasting information but also a three-month forecast of drought indicators with seasonal outlook which are updated every month based on international weather forecast models. Details on drought forecast are described in section 6.4 of this report.

6 Weather and Water Level Forecast and Flash Flood information

6.1 Rainfall forecast

From 29 October – 02 November 2024, the accumulated rainfall over the entire Lower Mekong Basin is distributed with light to moderate rain based on CHIRPS-GFS (Figure 12). The accumulated rainfall over the entire Lower Mekong Basin is distributed with light to moderate rain is expected over the Lower Mekong Basin.

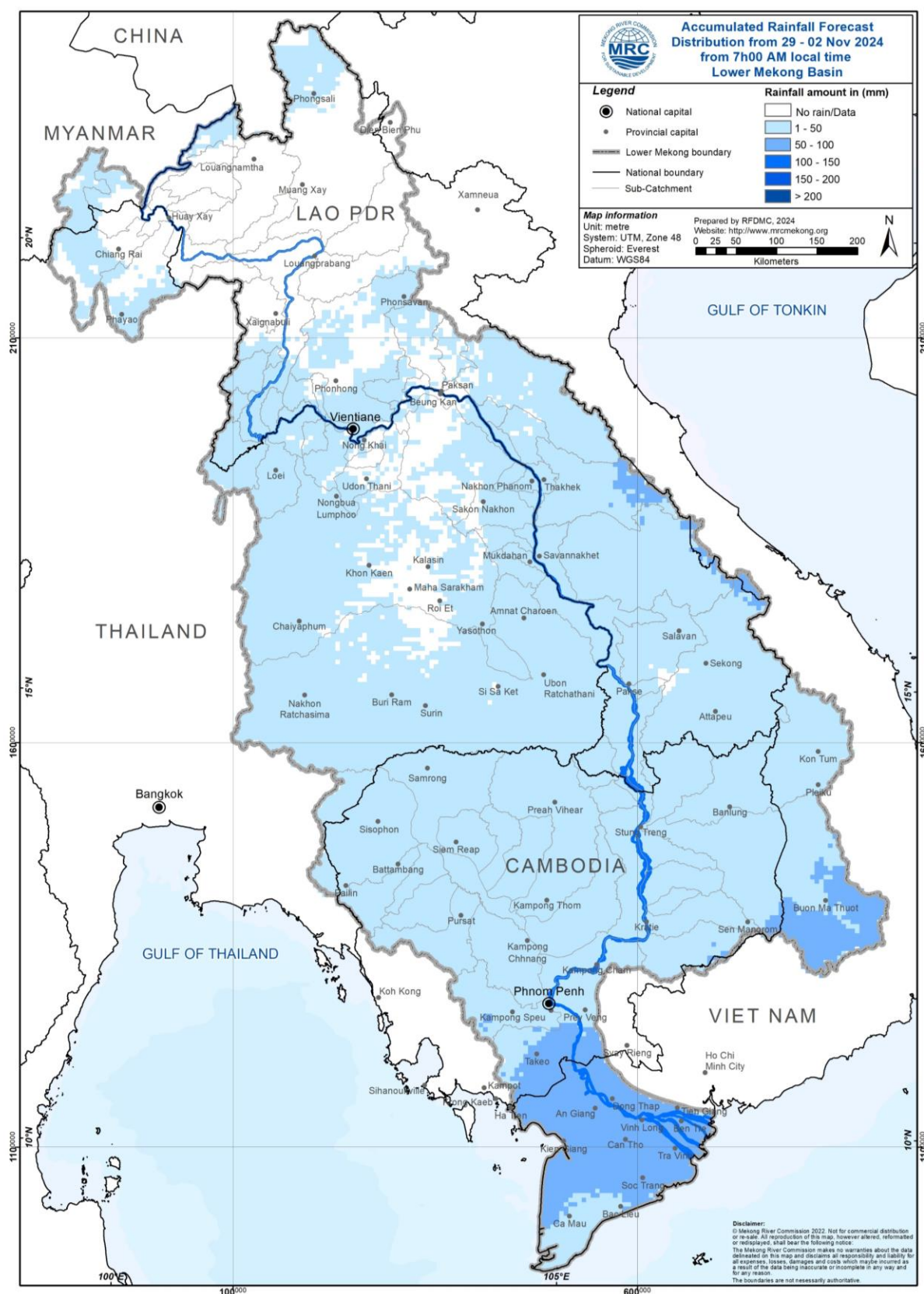


Figure 13: Accumulated rainfall forecast from CHIRPS-GEFS (29 October – 02 November 2024)

6.2 Water level forecast

The five-day forecast is carried out from 29 October to 02 November 2024 for 22 forecasting stations along the Mekong mainstream. Overall, water levels at all stations along the Mekong mainstream are expected to decrease except for Stung Treng and Kratie stations. At Chiang Saen, water level is expected to drop approximately -0.35 m, while at Luang Prabang station, water level is expected to stay stable.

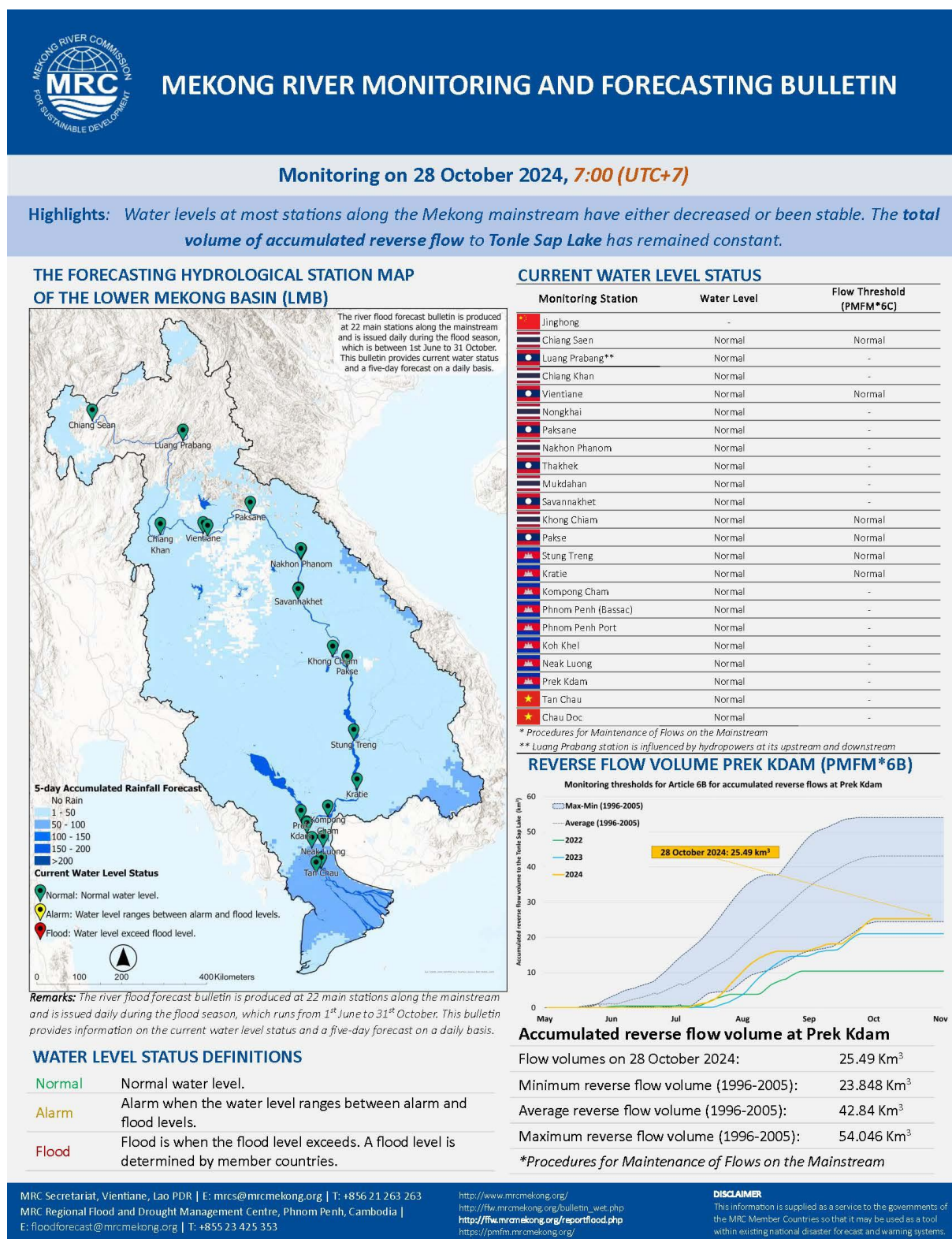
At Chiang Khan, Vientiane, Nongkhai, Paksane, Nakhon Phanom, and Mukdahan stations, water levels are expected to drop with approximated value of -0.31 m, -0.41 m, -0.46 m, -0.50 m, -0.46 m, and -0.40 m, respectively. Moreover, at Khong Chiam and Pakse stations, water levels are likely stable. At Stung Treng, and Kratie stations, water levels are expected to increase approximately 0.13 m, and 0.10 m, respectively.

Moving downstream at Kompong Cham, Phnom Penh (Bassac), Phnom Penh Port, Koh Khel, Neak Luong, and Prek Kdam, water levels are expected to drop approximately -0.17 m, -0.23 m, -0.27 m, -0.17 m, -0.41 m, and -0.21 m, respectively.

For the Tan Chau station on the Mekong River and Chau Doc station on the Bassac River, water levels are also expected to be drop as well. At Tan Chau, water level will decrease approximately -0.20 m, while at Chau Doc -0.16 m.

The weekly River Monitoring Bulletin and forecasting issued on 28 October 2024 can be found in **Table 2**. Results of the weekly river monitoring and forecasting bulletin are also available at <http://ffw.mrcmekong.org/bulletin.php>

Table 3. River Monitoring and Forecasting Bulletin




























MEKONG RIVER MONITORING AND FORECASTING BULLETIN

Forecasting from 29 October to 02 November 2024

Highlights: heavy rain may occur in some areas in the eastern part of Salavane and Sekong provinces of Lao PDR on 29 October. Water Levels at almost stations are **expected to decrease gradually** except for stations from Khong Chiam to Kratie.

Forecasting Station		24 h Observed Rainfall (mm)	Zero gauge above M.S.L (m)	Observed Water Level against zero gauge (m)		Forecasted Water Level (m)					Alarm Level (m)	Flood Level (m)	Forecasted Water Levels Change in 5 days (m)	Max. Water levels change within next 5 days (m)	Min. distance to alarm level within next 5 days (m)	Min. distance to flood level within next 5 days (m)	
		27-Oct		27-Oct	28-Oct	29-Oct	30-Oct	31-Oct	01-Nov	02-Nov							
	Jinghong	0.0	-	535.44	↑ 535.75	-	-	-	-	-	-	-	-	-	-	-	
	Chiang Saen	0.0	357.110	3.36	↓ 3.06	↓ 2.92	→ 2.84	→ 2.76	→ 2.74	→ 2.71	11.50	12.80	↓	-0.35	-0.35	8.58	9.88
	Luang Prabang	0.0	267.195	10.02	↑ 10.20	↑ 10.32	↓ 10.19	→ 10.10	→ 10.13	→ 10.19	17.50	18.00	→	-0.01	0.12	7.18	7.68
	Chiang Khan	0.0	194.118	7.41	↓ 7.33	→ 7.26	→ 7.21	→ 7.16	→ 7.10	→ 7.02	14.50	16.00	↓	-0.31	-0.31	7.24	8.74
	Vientiane	0.0	158.040	4.28	↓ 4.18	→ 4.10	→ 4.00	→ 3.91	→ 3.85	→ 3.77	11.50	12.50	↓	-0.41	-0.41	7.40	8.40
	Nongkhai	0.0	153.648	4.43	↓ 4.23	↓ 4.06	→ 3.99	→ 3.92	→ 3.86	→ 3.77	11.40	12.20	↓	-0.46	-0.46	7.34	8.14
	Paksane	0.0	142.125	5.49	↓ 5.36	↓ 5.23	↓ 5.11	→ 5.02	→ 4.95	→ 4.86	13.50	14.50	↓	-0.50	-0.50	8.27	9.27
	Nakhon Phanom	12.1	130.961	4.45	↓ 4.31	→ 4.25	↓ 4.11	↓ 3.98	→ 3.89	→ 3.85	11.50	12.00	↓	-0.46	-0.46	7.25	7.75
	Thakhek	11.4	129.629	5.60	↓ 5.47	→ 5.39	→ 5.34	↓ 5.19	→ 5.10	→ 5.03	13.00	14.00	↓	-0.44	-0.44	7.61	8.61
	Mukdahan	37.0	124.219	4.45	↓ 4.32	→ 4.23	↓ 4.12	→ 4.03	↓ 3.92	→ 3.92	12.00	12.50	↓	-0.40	-0.40	7.77	8.27
	Savannakhet	29.4	124.219	2.91	↓ 2.74	↓ 2.60	→ 2.52	↓ 2.41	→ 2.35	→ 2.36	12.00	13.00	↓	-0.38	-0.39	9.40	10.40
	Khong Chiam	51.0	89.030	5.62	↓ 5.56	→ 5.53	→ 5.48	→ 5.48	→ 5.51	→ 5.56	13.50	14.50	→	0.00	-0.08	7.94	8.94
	Pakse	59.0	86.490	4.16	↓ 4.14	→ 4.10	→ 4.14	→ 4.13	→ 4.16	→ 4.19	11.00	12.00	→	0.05	-0.04	6.81	7.81
	Stung Treng	30.0	36.790	5.02	↑ 5.11	↑ 5.18	→ 5.18	→ 5.14	→ 5.18	↑ 5.24	10.70	12.00	↑	0.13	0.13	5.46	6.76
	Kratie	12.6	-0.101	12.54	↓ 12.47	↑ 12.55	→ 12.55	↓ 12.48	↑ 12.52	↑ 12.57	22.00	23.00	↑	0.10	0.10	9.43	10.43
	Kompong Cham	9.0	-0.930	7.94	↓ 7.74	↓ 7.70	→ 7.70	↓ 7.66	↓ 7.60	→ 7.57	15.20	16.20	↓	-0.17	-0.17	7.50	8.50
	Phnom Penh (Bassac)	11.6	-1.020	6.53	↓ 6.30	↓ 6.24	↓ 6.18	↓ 6.14	→ 6.11	↓ 6.07	10.50	12.00	↓	-0.23	-0.23	4.26	5.76
	Phnom Penh Port	nr	0.070	5.33	↓ 5.19	↓ 5.10	↓ 5.05	↓ 5.00	↓ 4.96	↓ 4.92	9.50	11.00	↓	-0.27	-0.27	4.40	5.90
	Koh Khel	15.4	-1.000	5.96	↓ 5.80	↓ 5.74	↓ 5.69	→ 5.67	→ 5.66	↓ 5.63	7.90	8.40	↓	-0.17	-0.17	2.16	2.66
	Neak Luong	13.9	-0.330	4.76	↓ 4.62	↓ 4.47	↓ 4.35	↓ 4.27	→ 4.24	↓ 4.21	7.50	8.00	↓	-0.41	-0.41	3.03	3.53
	Prek Kdam	12.4	0.080	6.37	↓ 6.26	↓ 6.18	↓ 6.14	→ 6.11	→ 6.10	↓ 6.05	9.50	10.00	↓	-0.21	-0.21	3.32	3.82
	Tan Chau	nr	0.000	2.49	→ 2.49	→ 2.45	↓ 2.41	↓ 2.37	↓ 2.33	↓ 2.29	3.50	4.50	↓	-0.20	-0.20	1.05	2.05
	Chau Doc	0.5	0.000	2.44	↑ 2.48	→ 2.48	↓ 2.44	↓ 2.40	↓ 2.36	↓ 2.32	3.00	4.00	↓	-0.16	-0.16	0.52	1.52

WATER LEVEL FORECASTING DEFINITIONS

↑	Rising water level.
→	Stable water level: stable water level is defined as a daily change of less than 10cm from Chaing Saen to Savannakhet; less than 5cm at Pakse and Stung Treng; and no more than 3cm from Kratie downstream.
↓	Falling water level.
X	No data available.
Alarm stage	Alarm stage is when the water level ranges between alarm and flood levels.
Flood stage	Flood stage is when the flood level exceeds. A flood level is determined by member countries.

NOTES

- On 28 October, water levels at most of stations have either dropped or been stable. The total volume of accumulated reverse flow to Tonle Sap Lake has remained constant (25.49 Km³) since 01 October 2024.
- For 29 Oct- 02 Nov, light to moderate rain is expected over the LMB. However, heavy rain may occur in some areas in the eastern part of Salavane and Sekong provinces of Lao PDR on 29 October.
- For 29 Oct- 02 Nov, water Levels at all most stations along the Mekong mainstream are expected to drop except for water levels at stations from Khong Chiam to Kratie.

MRC Secretariat, Vientiane, Lao PDR | E: mrcs@mrcmekong.org | T: +856 21 263 263
MRC Regional Flood and Drought Management Centre, Phnom Penh, Cambodia |
E: floodforecast@mrcmekong.org | T: +855 23 425 353

<http://www.mrcmekong.org/>
http://fw.mrcmekong.org/bulletin_wet.php
<http://fw.mrcmekong.org/reportflood.php>
<http://pmhm.mrcmekong.org/>

DISCLAIMER
This information is supplied as a service to the governments of the MRC Member Countries so that it may be used as a tool within existing national disaster forecast and warning systems.

6.3 Flash Flood Information

With the predicted rainfall for the coming week, flash floods might not be detected in some areas in the LMB.

Further detailed information on Flash Flood Guidance Information, as well as its explanation, is available for download [here](#).

6.4 Drought forecast

There are several climate-prediction models with different scenarios in the upcoming months. The MRC's DFEWS adopts the global scale of North America Multi-Model Ensemble (NMME) for the seasonal outlook of rainfall.

Figure 13 below shows the monthly forecasts of combined drought indicator from October to December 2024 over the LMB area.

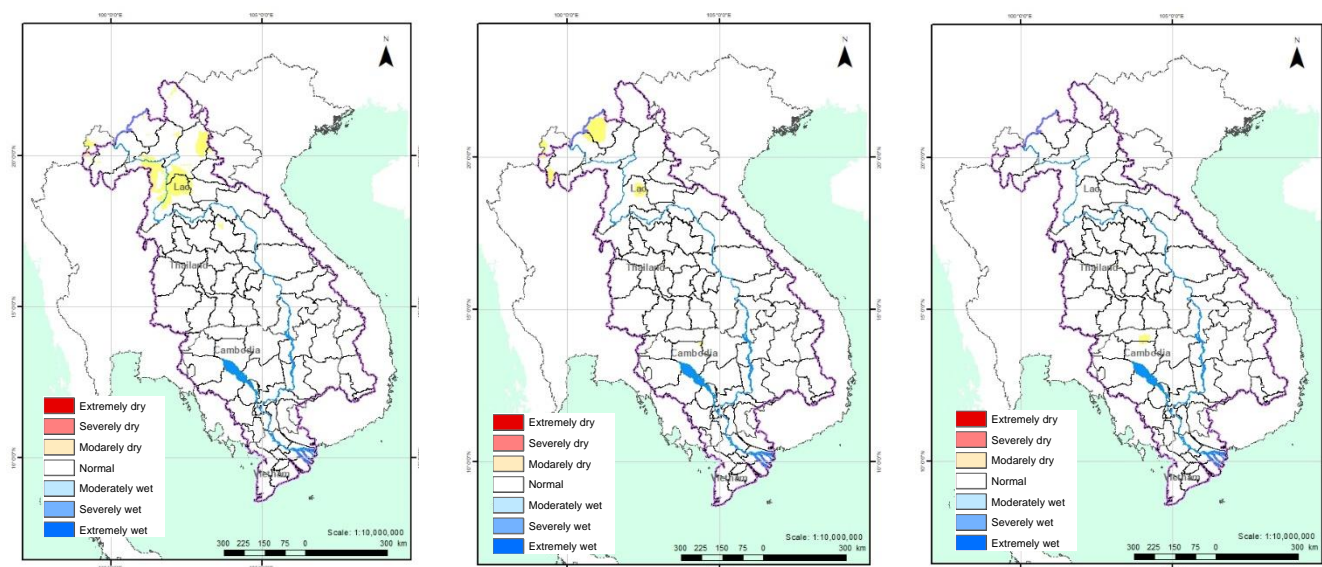


Figure 14. Monthly forecasts of combined drought indicator for a) November, b) December 2024 and c) January 2025.

Figure 14 illustrates the monthly drought forecast for the upcoming three months using the Combined Drought Indicator (CDI). The forecast indicates that no significant drought conditions are expected across the entire LMB during this period. However, in November and December 2024, the upper part of the LMB, including Xayabouly and Luang Namtha provinces, is anticipated to experience moderate drought conditions.

7 Summary and Possible Implications

7.1. Rainfall and its forecast

In the period of 22 – 28 October 2024, light to moderate rainfall has been observed over the LMB. Especially, heavy rain occurred in some areas in Kompong Speu, Pailin, Mung Russey,

Moung Tchepone, Pakse, Veun Khen, Tala Boriwat, Bovel, Sekong, Sesan, Dak To, Pleiku, Kon Tum.

From 29 October – 04 November 2024, light to moderate rain is expected over the Lower Mekong Basin.

7.2. Water level and its forecast

At 22 key monitoring stations along the Mekong mainstream from 22 – 28 October 2024, water levels at all stations along the Mekong mainstream have decreased except for Luang Prabang and Stung Treng stations. However, water levels are in normal conditions. The total accumulated volume of the reverse flow to Tonle Sap Lake remains 25.49 Km³. This value has remained constant since 01 October 2024

In the period of 29 October – 02 November 2024, water levels at almost all stations along Mekong mainstream from are likely expected to drop except for Stung Treng and Kratie stations.

7.3. Flash flood and its trends

With the predicted of rainfall for the coming week as mentioned earlier in part 2, the flash flood guidance at a low level will likely be detected in some areas of the LMB.

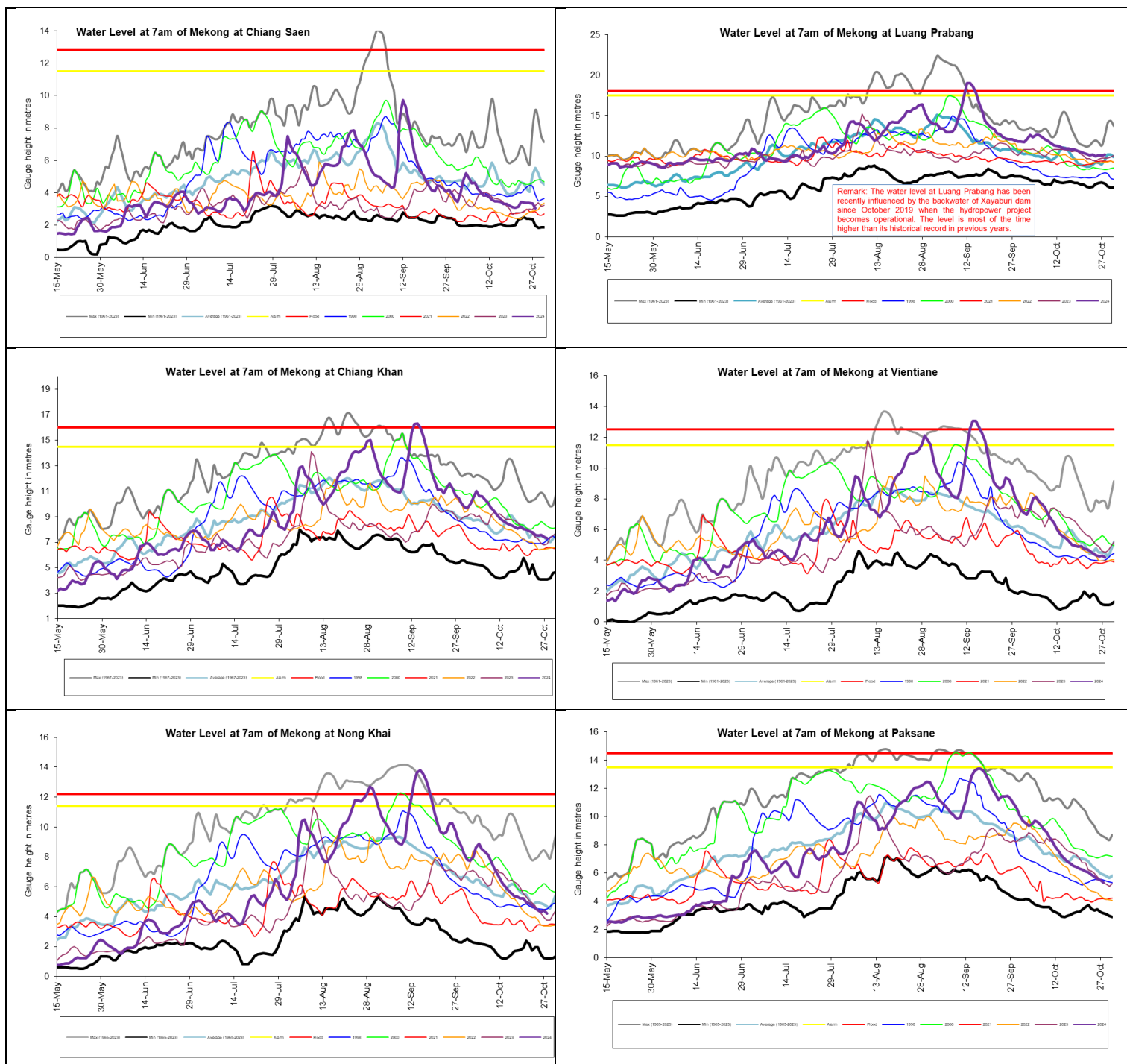
7.4. Drought condition and its forecast

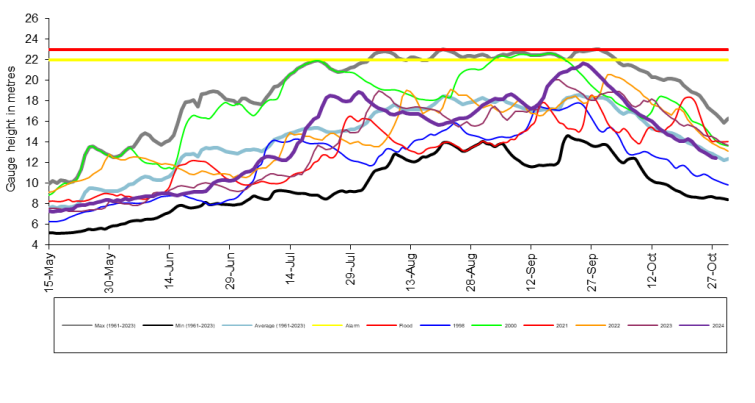
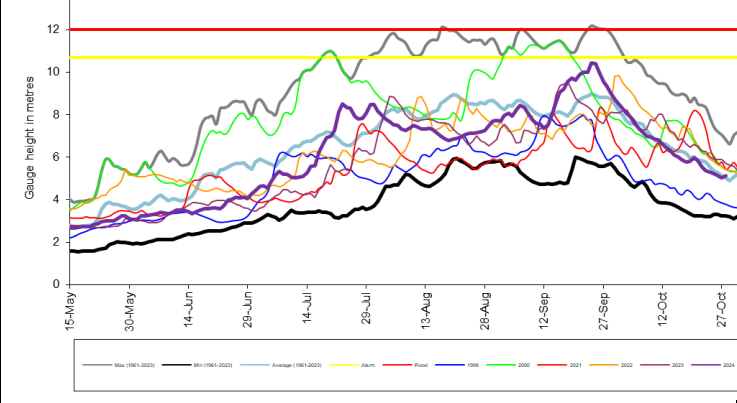
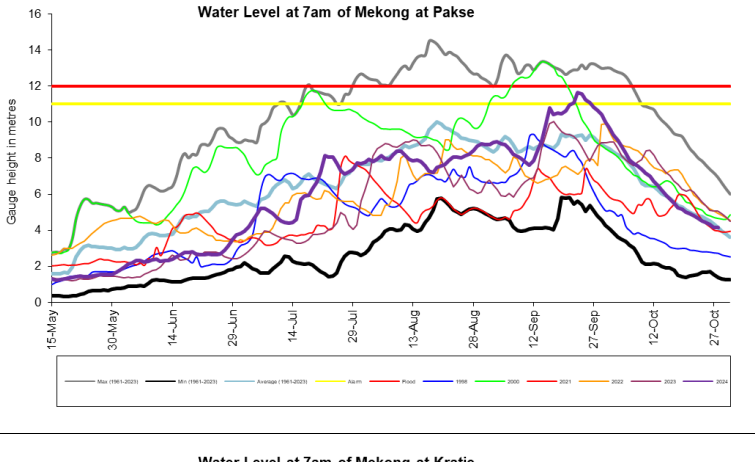
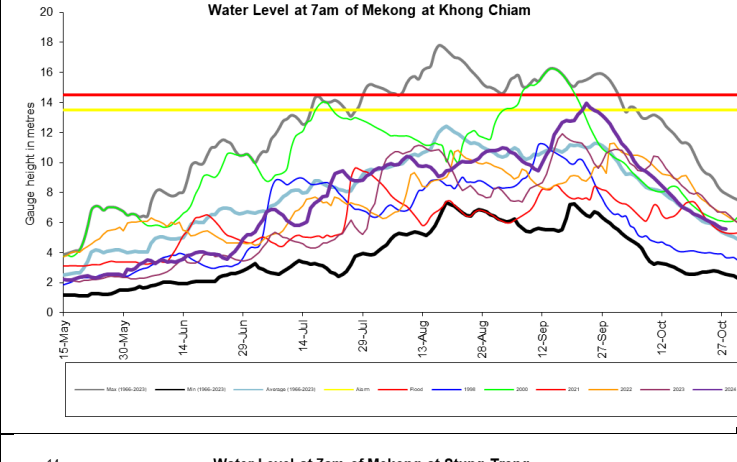
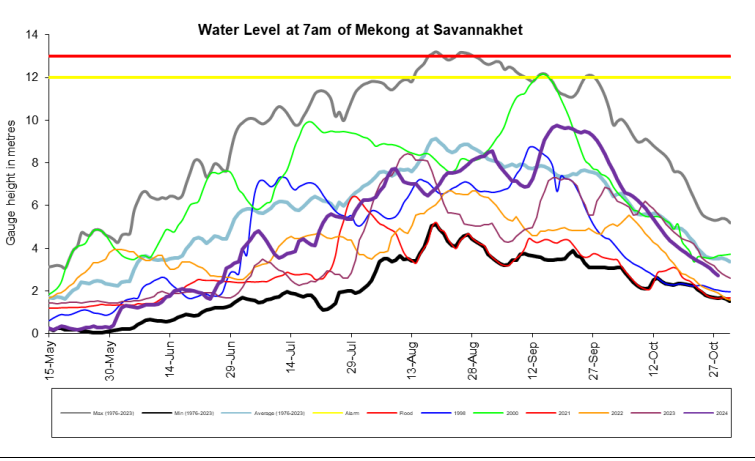
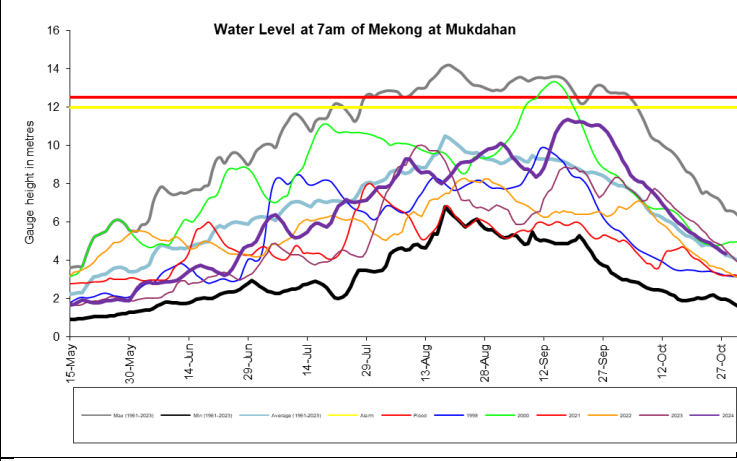
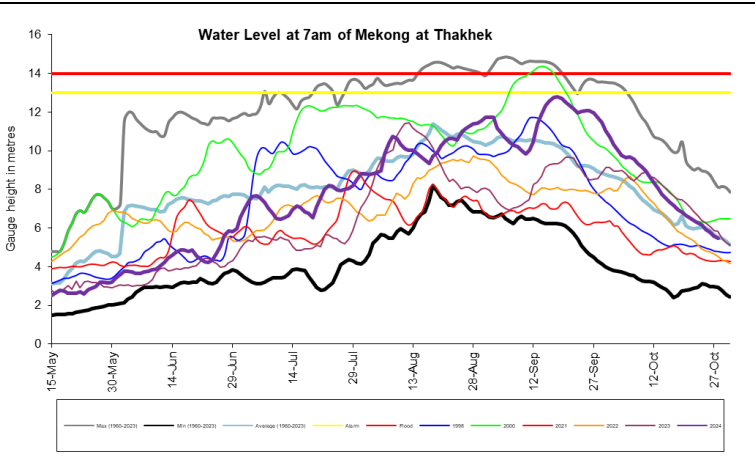
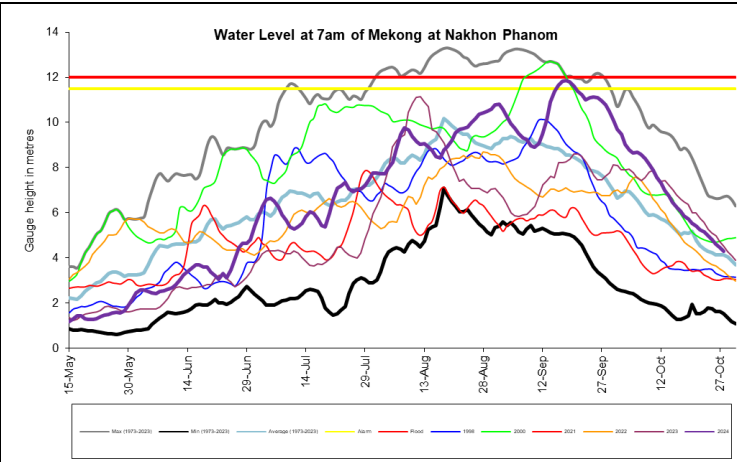
From 22 – 28 October 2024, the LMB is experiencing normal to wet conditions, except for some areas in the northeastern of Thailand and the western part of Mekong Delta. The observed drought was caused primarily by meteorological indicator.

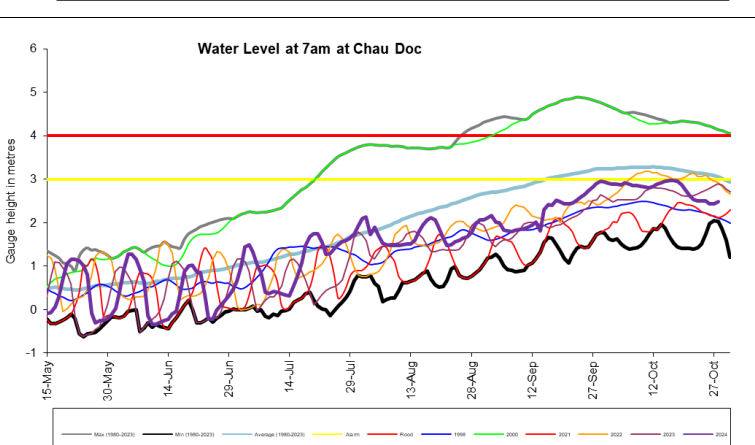
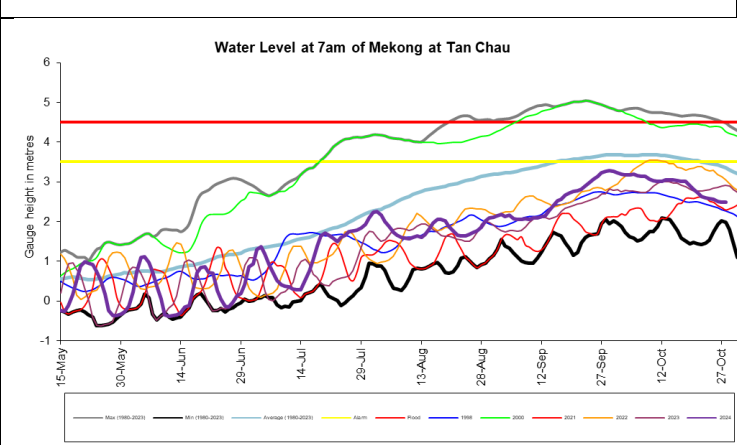
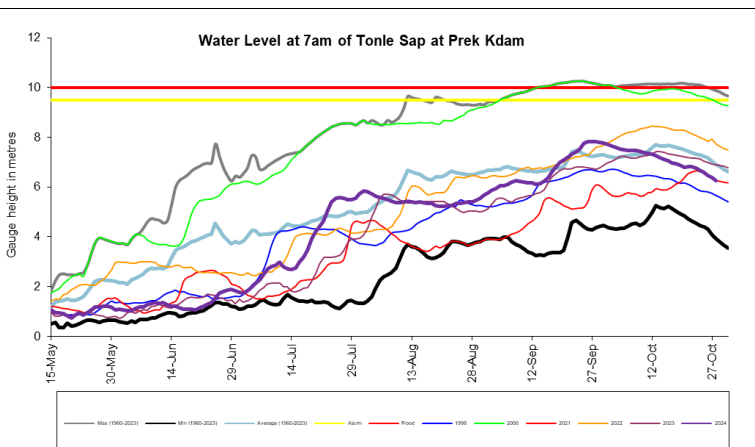
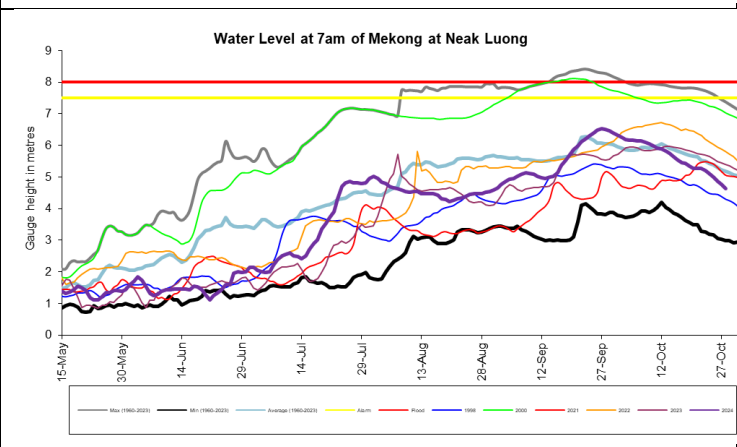
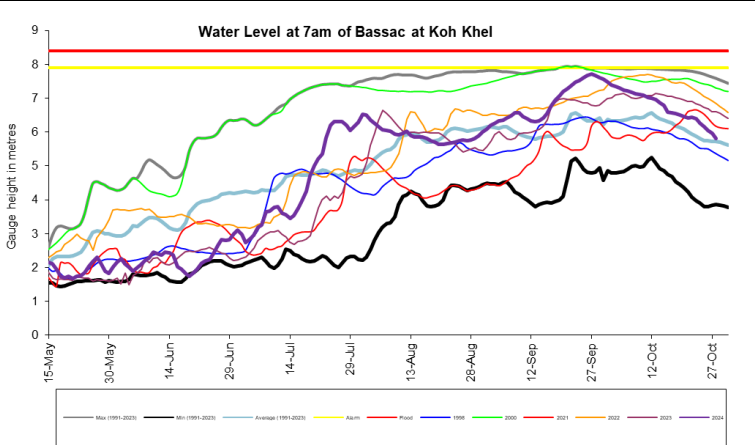
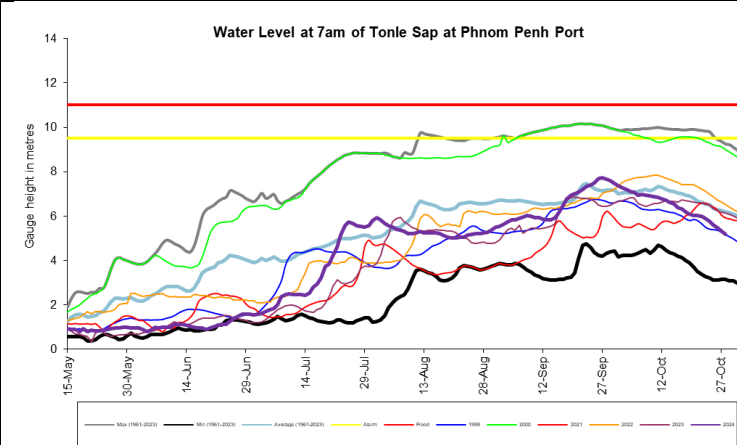
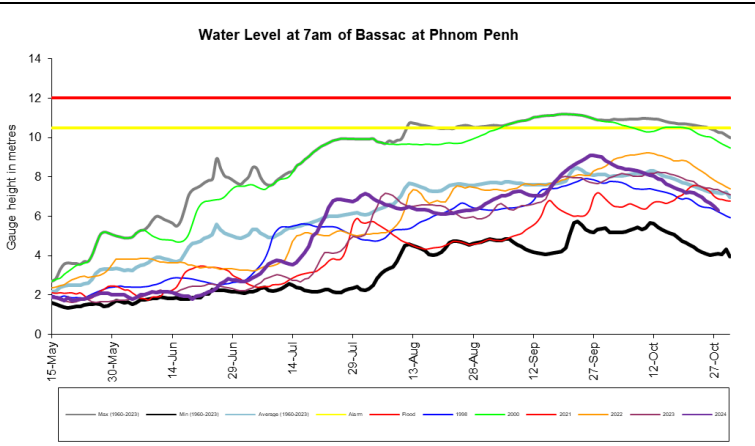
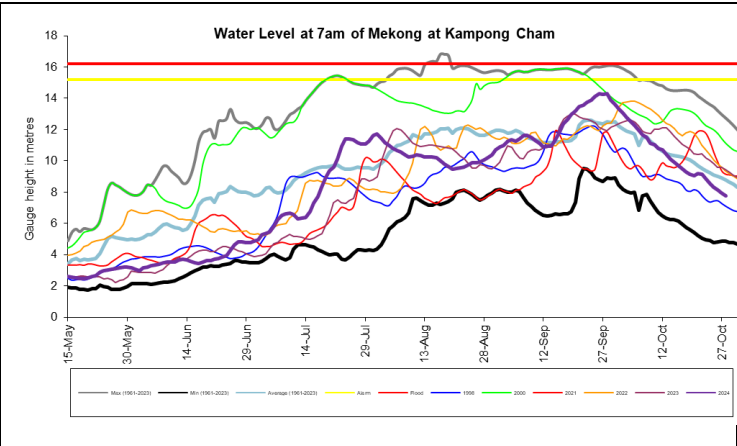
From 29 October – 04 November, the LMB is likely at normal conditions. No drought is forecasted for the whole region.

From November 2024 to January 2025, the forecast indicates that no significant drought conditions are expected across the entire LMB during this period. However, in November and December 2024, the upper part of the LMB, including Xayabouly and Luang Namtha provinces, is anticipated to experience moderate drought conditions.

Annex A: Weekly water level monitoring at the 22 key stations







Annex B: Tables for weekly updated water levels and rainfall at the Key Stations

Table A1: Weekly observed water levels

2024	Jinghong	Chiang Saen	Luang Prabang	Chiang Khan	Vientiane	Nongkhai	Paksane	Nakhon Phanom	Thakhek	Mukdahan	Savannakhet	Khong Chiam	Pakse	Stung Treng	Kratie	Kompong Cham	Phnom Penh (Bassac)	Phnom Penh Port	Koh Khel	Neak Luong	Prek Kdam	Tan Chau	Chau Doc
22/10/2024	536.07	3.15	10.26	7.88	4.71	4.90	6.14	5.26	6.40	5.05	3.50	6.35	4.78	5.52	14.11	9.16	7.20	5.98	6.44	5.27	6.82	2.64	2.53
23/10/2024	536.05	3.44	10.12	7.76	4.61	4.75	6.05	5.16	6.29	4.98	3.41	6.21	4.66	5.35	13.60	8.88	7.09	5.89	6.39	5.20	6.76	2.60	2.50
24/10/2024	536.11	3.42	10.14	7.58	4.45	4.58	5.91	5.00	6.14	4.91	3.32	6.07	4.52	5.28	13.24	8.55	6.96	5.76	6.27	5.10	6.68	2.57	2.50
25/10/2024	536.11	3.37	9.96	7.52	4.32	4.43	5.75	4.80	5.94	4.74	3.19	5.95	4.42	5.23	13.02	8.32	6.79	5.61	6.15	5.00	6.57	2.56	2.50
26/10/2024	535.47	3.38	10.08	7.55	4.27	4.33	5.58	4.60	5.77	4.60	3.05	5.79	4.30	5.12	12.84	8.12	6.67	5.47	6.04	4.87	6.47	2.50	2.43
27/10/2024	535.44	3.36	10.02	7.41	4.28	4.43	5.49	4.45	5.60	4.45	2.91	5.62	4.16	5.02	12.54	7.94	6.53	5.33	5.96	4.76	6.37	2.49	2.44
28/10/2024	535.75	3.06	10.20	7.33	4.18	4.23	5.36	4.31	5.47	4.32	2.74	5.56	4.14	5.11	12.47	7.74	6.30	5.19	5.80	4.62	6.26	2.49	2.48
Flood level		12.80	18.00	16.00	12.50	12.00	14.50	12.50	14.00	12.50	13.00	14.50	12.00	12.00	23.00	16.20	12.00	11.00	7.90	8.00	10.00	4.50	4.00

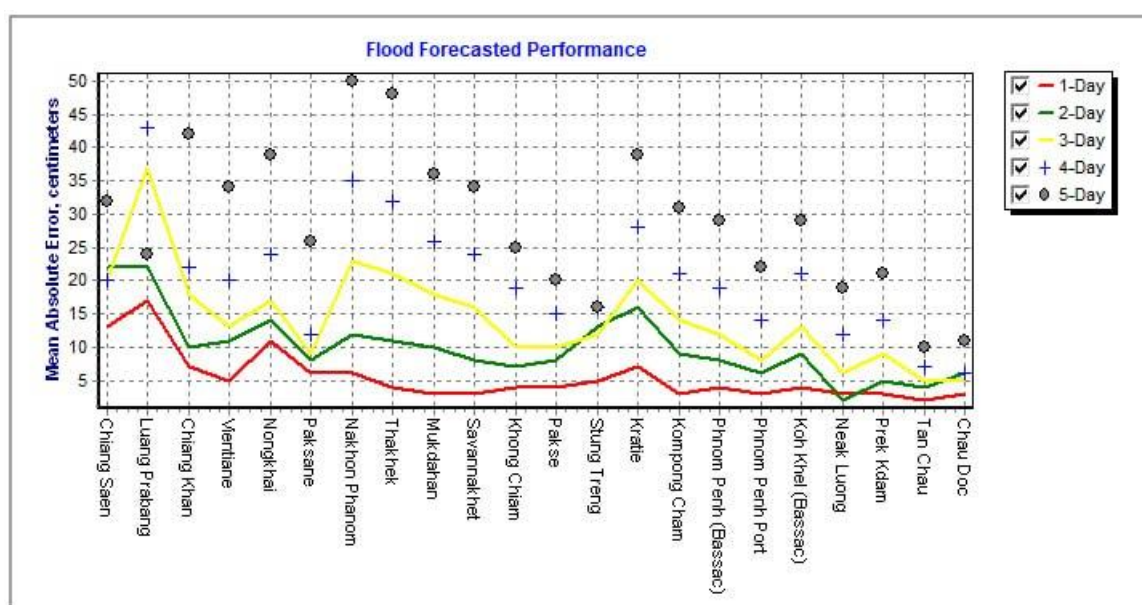
Table A2: Weekly observed rainfall

2024	Jinghong	Chiang Saen	Luang Prabang	Chiang Khan	Vientiane	Nongkhai	Paksane	Nakhon Phanom	Thakhek	Mukdahan	Savannakhet	Khong Chiam	Pakse	Stung Treng	Kratie	Kompong Cham	Phnom Penh (Bassac)	Phnom Penh Port	Koh Khel	Neak Luong	Prek Kdam	Tan Chau	Chau Doc
22/10/2024	0	0	0	4.6	0	0	0.1	0	0	0	0	0	0.6	0	0	6	0		0	0	0	0	0
23/10/2024	1	0	0	0	0	0	0	0	0	0	0	0	0	0	5	10	9.5		0	20.2	0	0	2.3
24/10/2024	0	0	0	0	0	0	0	0	0	0	0	0	0	0	0	0	0.2		9.2	13.6	0	0	14
25/10/2024	0	0	0	0	0	0	0	0	0	0	0	0	0	0	0	0	0		0	0	0	0	0
26/10/2024	0	0	0	0	0	0	0	0	0	0	0	0	0	0	0	0	0		0	0	0	0	0
27/10/2024	0	0	0	0	0	0	0	3.3	4.6	3.2	7	5.1	5.6	14	0.2	11	0		0	0	0	0.9	36
28/10/2024	0	0	0	0	0	0	0	12.1	11.4	37	29.4	51	59	30	12.6	9	11.6		15.4	13.9	12.4	0	0.5
Sum	1.0	0.0	0.0	4.6	0.0	0.0	0.1	15.4	16.0	40.2	36.4	56.1	65.2	44.0	17.8	36.0	21.3	0.0	24.6	47.7	12.4	0.9	52.8

Annex C: Performance of the weekly flood forecasting

“Accuracy” here refers to the state where data recorded in the MRC’s Mekong River Flood Forecasting System are cleaned and verified.

The adjustment of flood forecasting outcomes from the flood forecasting system requires flood forecasters to have extensive knowledge in hydrology and statistical modelling for estimating the relationships between stations upstream and downstream in the Mekong River Basin. Flood forecasting performance presented in the graph below shows the average flood forecasting accuracy at each key station along the Mekong mainstream from 22 to 28 October 2024.



The forecasting values from 22 to 28 October 2024 show that the overall accuracy is fair for a four-day to five-day forecast in lead time (less than 250 cm) for all forecasting stations.

Note: The higher percentage of flood forecasting accuracy is due to several key factors as follows:

- Missing rainfall in Cambodia (DOM) data and data input are not sufficient to be used for inputting into the flood forecasting model system.
- Chiang Saen station is influencing by hydropower upstream operation from China.
- Luang Prabang to Chiang Khan and Paksane to Stung Treng to Kratie have been influenced by hydropower operations upstream, tributaries inflows.
- The influence of heavy rainfall caused by storms and hydropower operations from upstream, tributaries inflows and the lower part of the Mekong floodplain, including the 3S (Stung Treng and Kratie).
- Fluctuations of the water levels at Tan Chau and Chau Doc stations were due to daily tidal effects of the sea in the Mekong Delta.
- Satellite rainfall data were not representative of the actual rainfall at ground stations in some areas of the Mekong region.



Mekong River Commission Secretariat

P. O. Box 6101, 184 Fa Ngoum Road, Unit 18 Ban Sithane Neua, Sikhottabong District, Vientiane 01000, Lao PDR

Tel: +856 21 263 263. Fax: +856 21 263 264 www.mrcmekong.org

© Mekong River Commission 2024