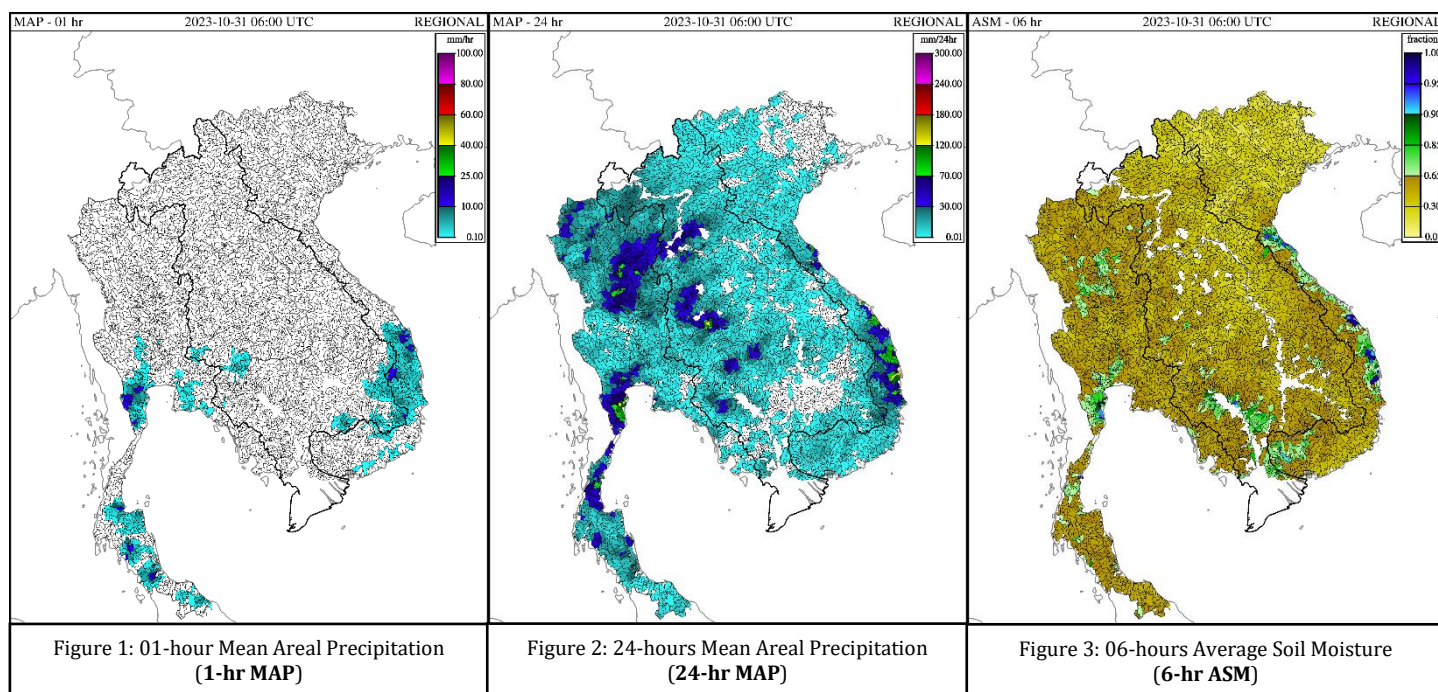


### Products of the MRC Flash Flood Guidance System (MRCFFGS) On 31 October 2023 at 06:00 UTC (01:00 PM Local time)

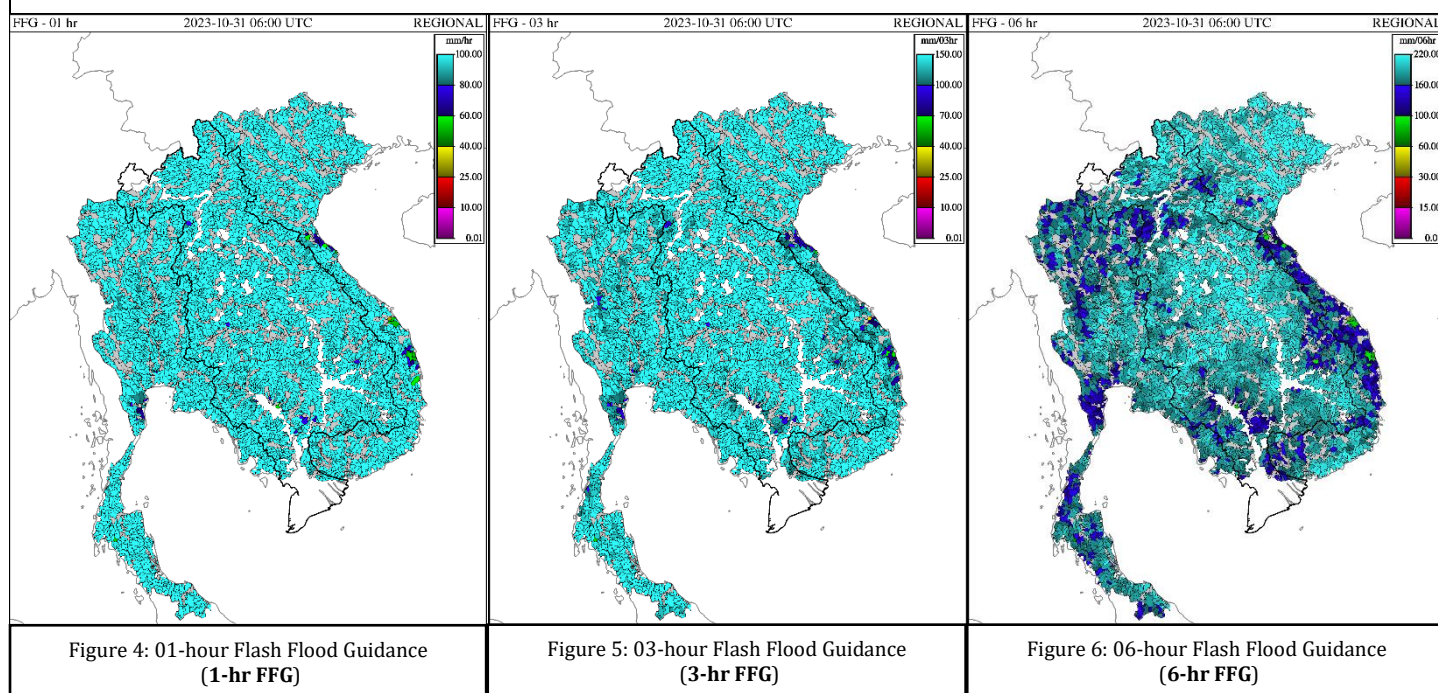
#### Main conclusion and guidance for flash flood in the Lower Mekong Basin:

(In critical weather conditions, the text below will be changed to red color)

- In the next 1, 3 and 6 hours, the flash flood risk will likely be detected in some areas of Cambodia, and Viet Nam.
- Details on the location of the flash flood risk areas in the LMB are in the attached excel file and on the webpage:  
<http://ffw.mrcmekong.org/ffg.php>



Small to heavy rain occurred in some areas of the LMB in the last 01 and 24-hrs. Soil moisture in some areas of Cambodia was nearly saturation status in the last 6-hr.



In the next 1, 3 and 6 likely hours, the flash flood risk will likely be detected in some areas Cambodia, and Viet Nam.

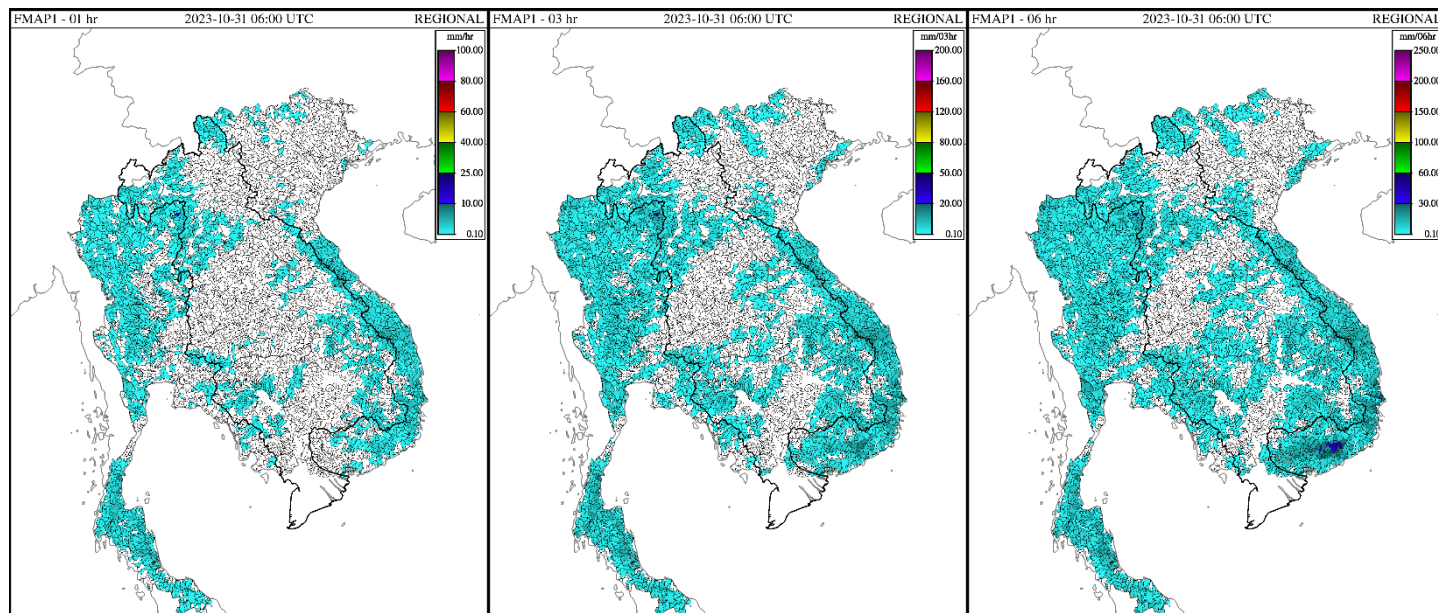


Figure 7: 01-hour Forecast Mean Areal Precipitation (1-hr FMAP)

Figure 8: 03-hours Forecast Mean Areal Precipitation (3-hr FMAP)

Figure 9: 06-hour Forecast Mean Areal Precipitation (6-hr FMAP)

Small to moderate rain in the next 01, 03, and 06 hours will be forecasted in the LMB.

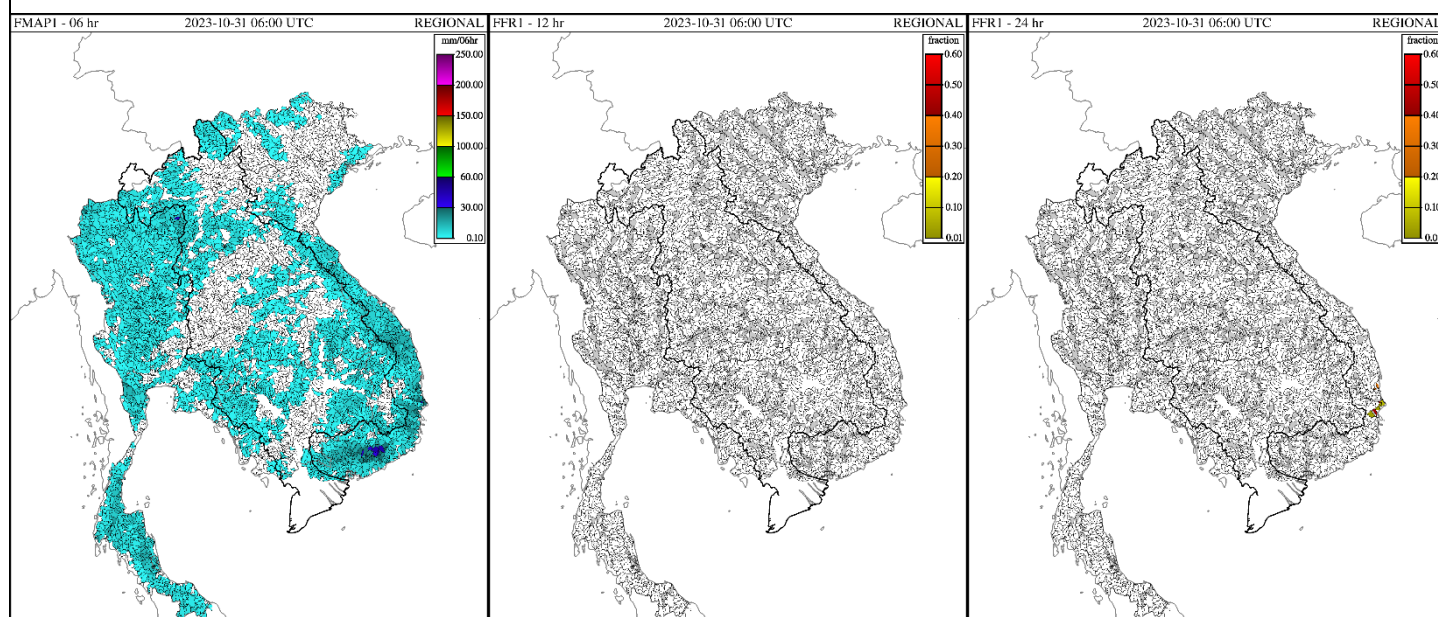


Figure 10: 24-hour Forecast Mean Areal Precipitation (24-hr FMAP)

Figure 11: 12-hour Flash Flood Risk (12-hr FFR)

Figure 12: 24-hour Flash Flood Risk (24-hr FFR)

Small to moderate rains will likely occur in the LMB in the next 24 hours. The flash flood risk for the next 12-, 24-hour will not possibly occur in the LMB.

Head of RFDMC  
(For critical weather condition)

Forecaster  
  
Nguyen Ngoc Hoa

#### Remarks:

**FFG** - Flash Flood Guidance: The amount of rainfall over a given duration (1, 3, 6 hours) which is just enough to cause bank-full flow in the draining stream outlet.

**MAP** - Mean Areal Precipitation: Derived mean areal precipitation estimates from bias-adjusted Micro-Wave Global Hydro Estimator (MWGHE) and GHE.

**ASM** - Average Soil Moisture: Soil water saturation fraction (dimensionless ratio of contents over capacity) for the upper zone (approximately 20-30 cm depth).

**FMAP** - Forecast Mean Areal Precipitation: Accumulations of forecasted mean areal precipitation produced by numerical forecasts from the Weather Research and Forecasting (WRF) model. Each data product reflects basin-average precipitation accumulations from the navigation hour over the corresponding interval.

**FFR** - Flash Flood Risk: Products for forecast periods of 12, 24 and 36 hours (forecast periods 12 and 24 hours are shown in this bulletin). These products are computed every six hours and measure the occurrence of positive forecast flash flood threat (FMAP > FFG) over a given forecast period using forecast precipitation to drive the Soil and FFG models.

For more clarification of the MRCFFGS products please go to the Sheet "**Explanation**" in the attached excel file.

Note: Please be aware of the different color bar codes of each product.